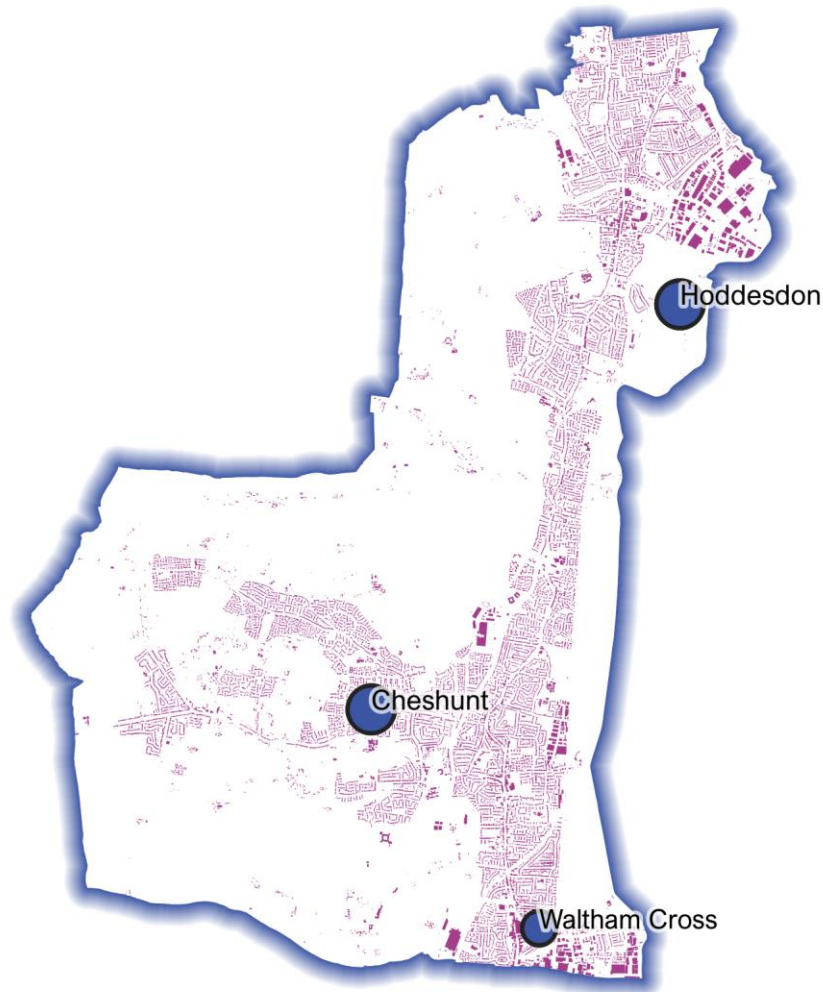


April 2021

Powered By
BuiltPlace

Detailed Price Paid Report:

Broxbourne



0 5 10 km

Contents	
2	House price growth
3	Sales map
4	Average prices + distribution
5	Transaction timeline
6	Depth of market



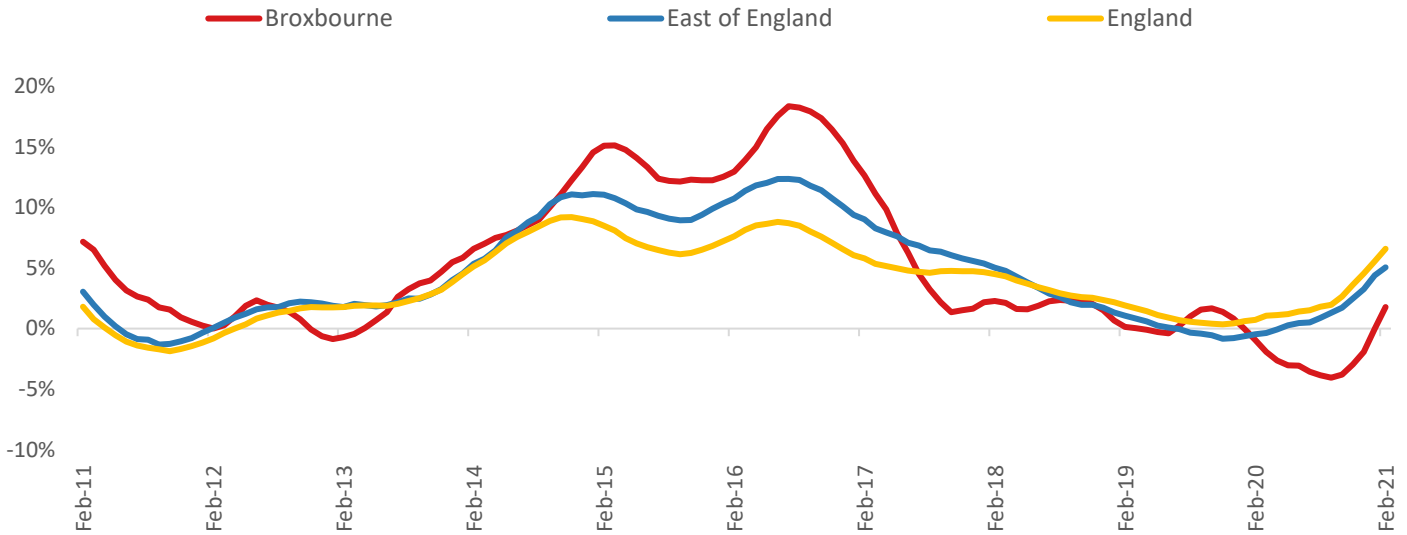
Click the main map above to visit our Cities, Towns & Villages page, for local analysis of the locations shown and over 2000 more

Headline Data

	Current level	3 month	Annual	5 year	10 year
House prices	£363,282	2.6%	1.8%	16.3%	60.1%
Transactions	1,141	4.0%	-7.8%	-29.1%	-14.5%

House Price Growth (February 2021 data)

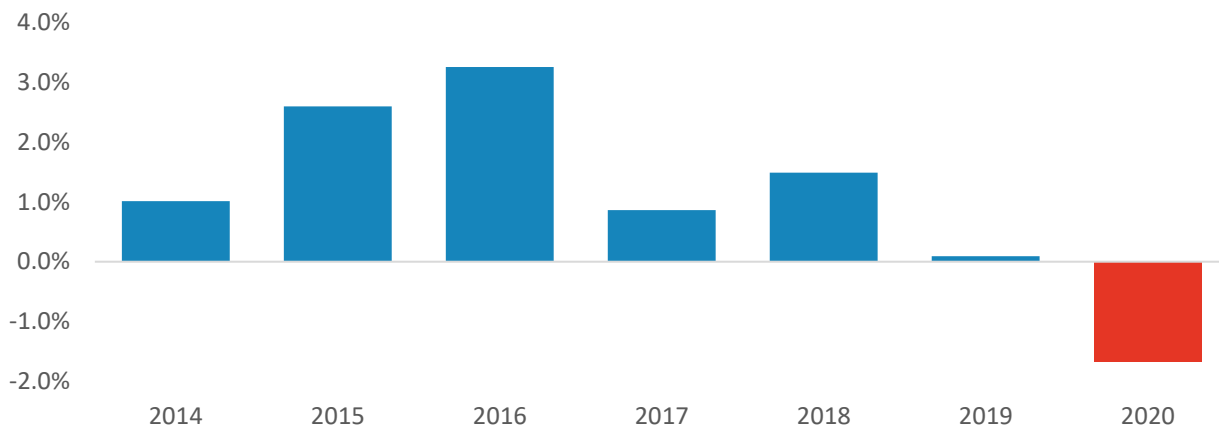
Annual Change in House Prices



House prices in Broxbourne grew by 1.8% in the 12 months to February 2021 (based on 6-month smoothed data). By comparison national house prices grew by 6.6% and prices in the East of England grew by 5.1% over the same period.

Broxbourne house prices are now 52.0% above their previous peak in 2007, compared to +45.9% for the East of England and +36.1% across England.

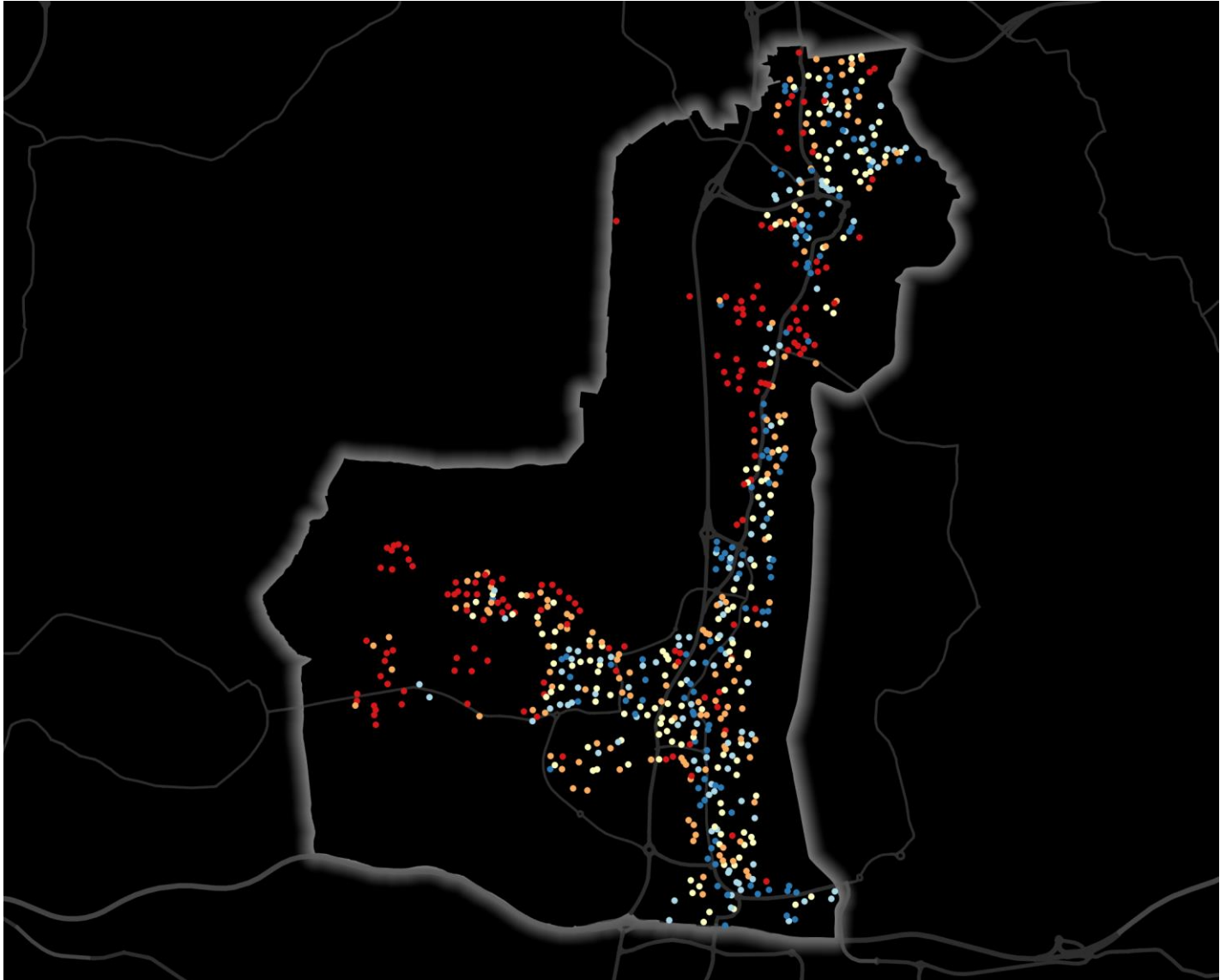
Year-To-Date Change in House Prices, December to February



Local prices have fallen by 1.7% in 2021 so far, compared to growth of 0.1% over the same period last year.

House Price Map

12 months to February 2021



Each point is one postcode, coloured by the average value relative to all sales in this local authority (price bands are LA-specific quintiles).

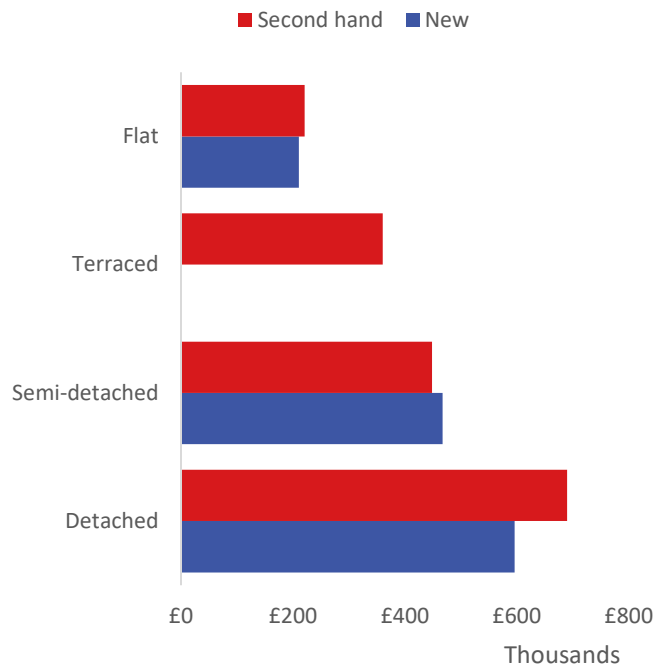
Map Key



	Min	Max	
	Up to	£253,000	1st quintile / lowest 20%
£253,000		£340,000	2nd quintile
£340,000		£393,000	3rd quintile
£393,000		£502,000	4th quintile
£502,000		and over	5th quintile / highest 20%

Average House Price by Property Type

12 months to February 2021



	New	Second hand
Flat	£210,500	£220,646
Terraced	No recorded sales	£360,602
Semi-detached	£467,500	£448,230
Detached	£596,000	£689,760

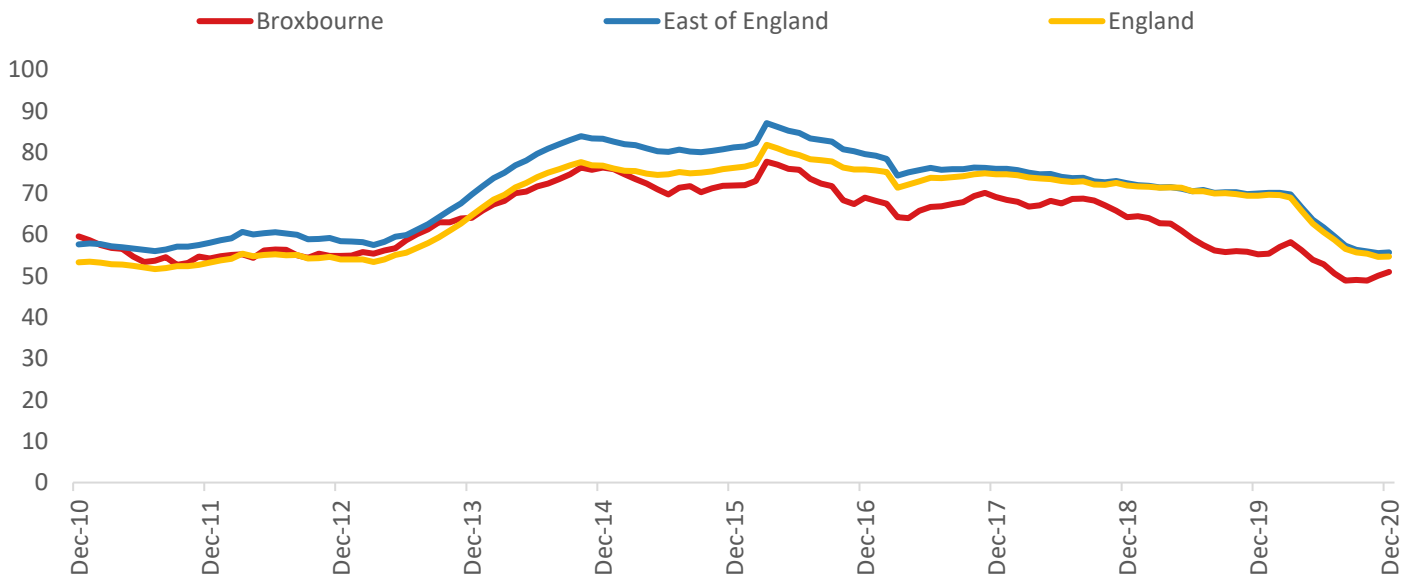
House Price Distribution by Year

All properties, by price band and calendar year (2020 = year to date)

	1997	2002	2007	2012	2017	2019	2020
Under £100k	69%	17%	1%	2%	0%	0%	0%
£100-200k	24%	58%	39%	31%	11%	7%	7%
£200-300k	5%	15%	43%	46%	25%	24%	21%
£300-400k	2%	6%	10%	12%	34%	36%	34%
£400-500k	0%	2%	4%	5%	15%	16%	18%
£500k-1m	0%	1%	3%	4%	12%	16%	19%
£1-2m	0%	0%	0%	0%	2%	1%	1%
Over £2m	0%	0%	0%	0%	0%	0%	0%

Transactions (December 2020 data)

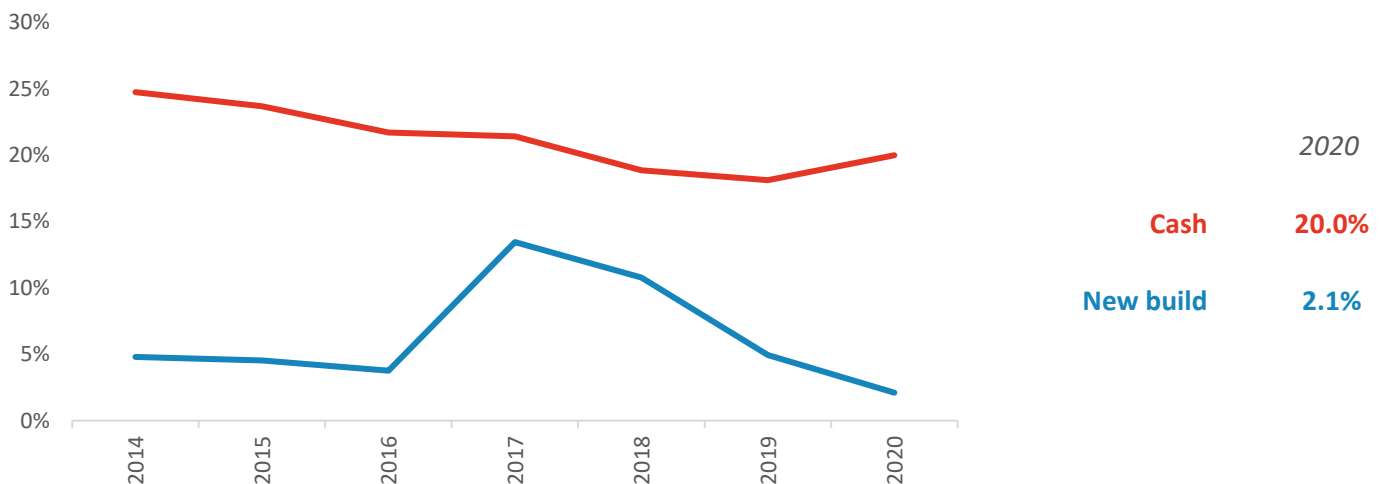
Annual Transactions, Indexed (2001-05 average = 100)



There were 1,141 transactions in Broxbourne during the 12 months to December 2020. This is 51% of the average from 2001-05 and suggests activity is significantly below pre-downturn levels.

Transactions in Broxbourne have fallen by 33.1% since 2014, compared to changes of -33.1% for East of England and -28.7% for England.

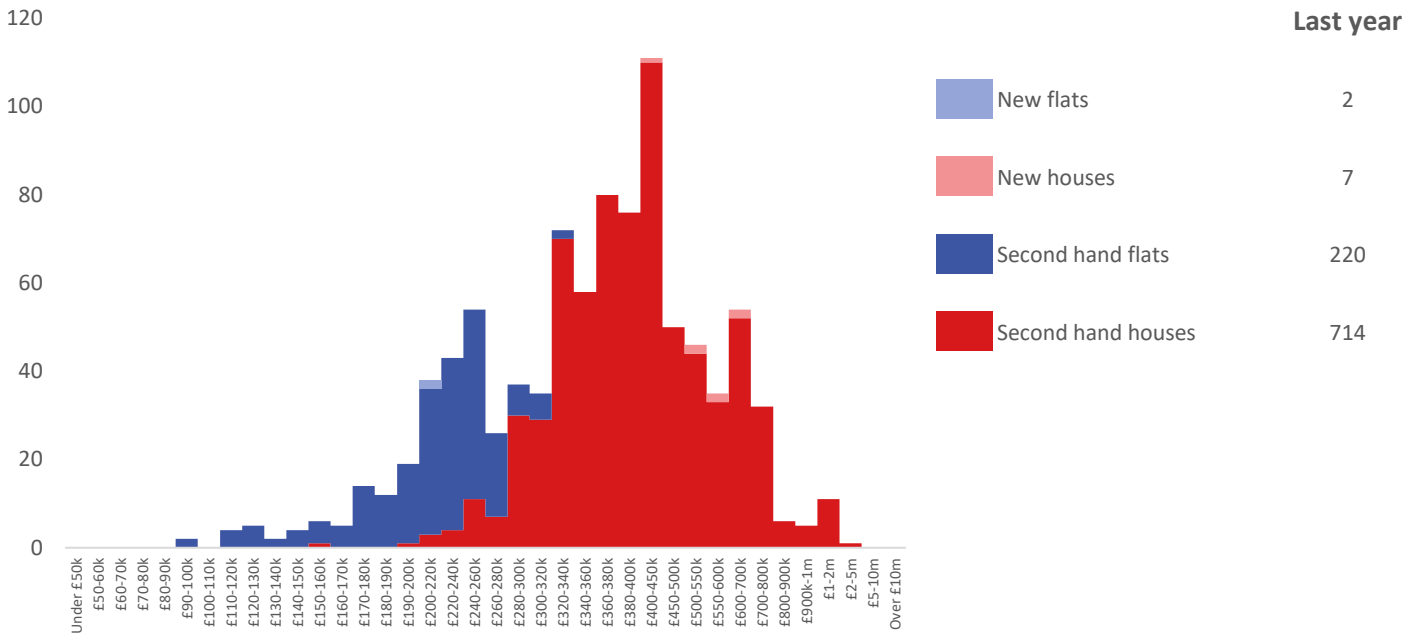
Cash and New Build Sales as % of Total, by Year



Note: The data on this page EXCLUDES transactions identified as transfers under a power of sale/repossessions, buy-to-lets (where they can be identified by a mortgage), and transfers to non-private individuals - i.e. it comprises only Land Registry 'A' data.

Depth of Market by Property Type

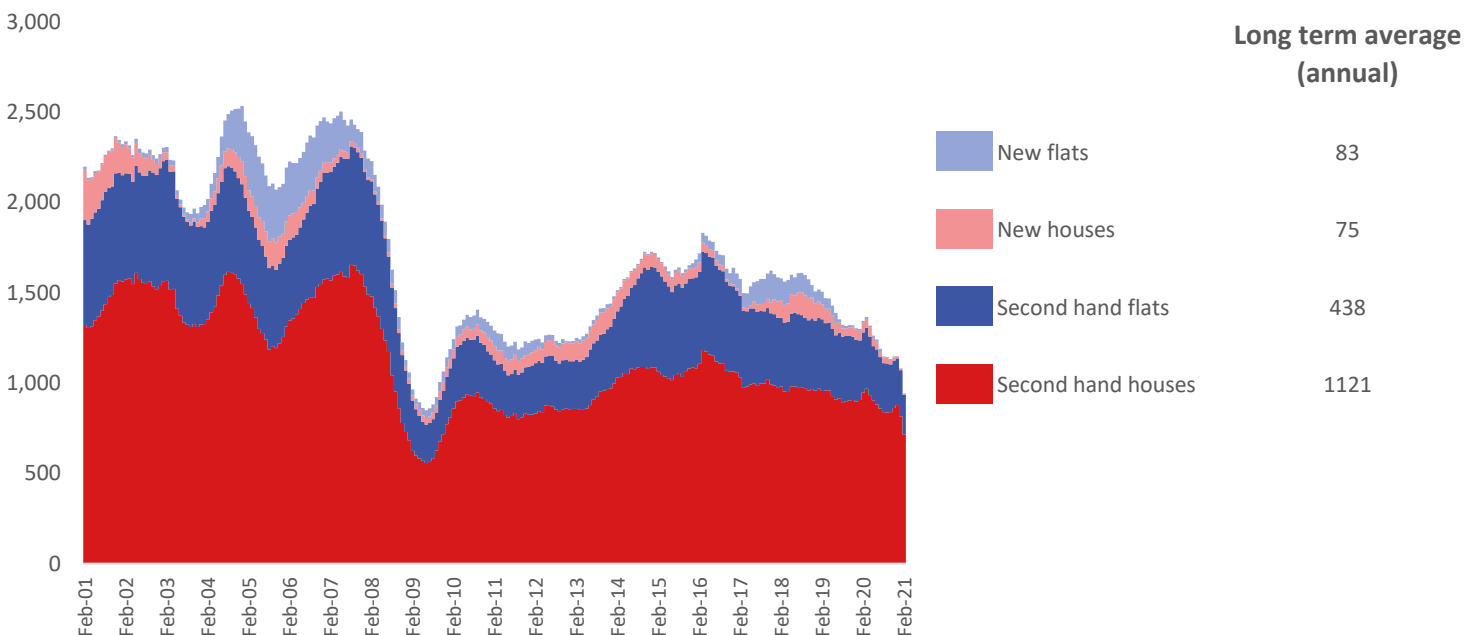
12 months to February 2021



The most common property type transacted over the past 12 months in Broxbourne was 'second hand houses' with 714 sales, 76% of all sales over the same period. The annual total of 943 transactions is equivalent to 55% of the long term average level of activity.

Timeline of Transactions by Type

Rolling 12 months, past 20 years



The most common property type transacted over the past 20 years was 'second hand houses' with the equivalent of 1,121 sales per year on average, making up 65% of the typical annual total over that period.