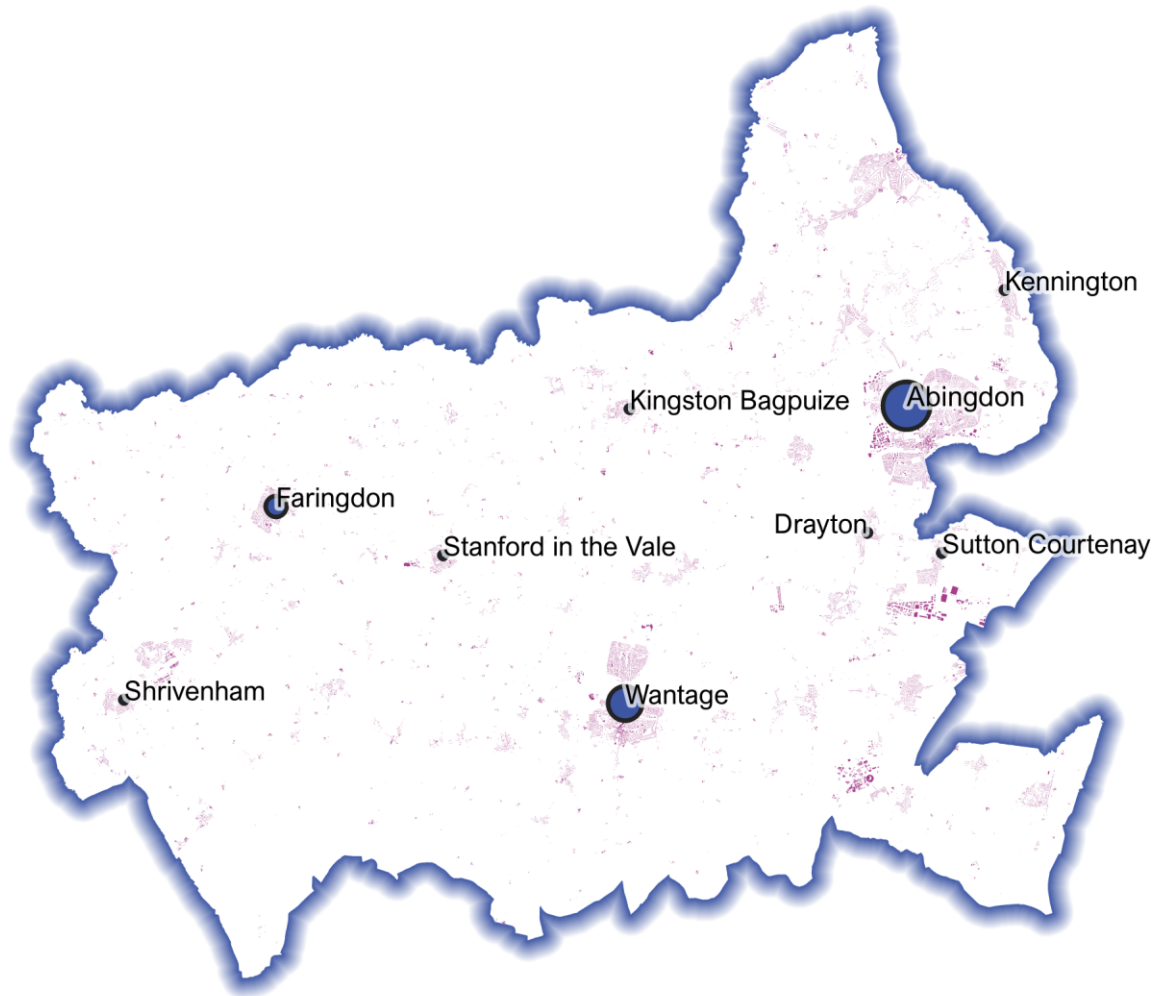


April 2021

Powered By  
BuiltPlace

# Detailed Price Paid Report:

## Vale of White Horse



0 10 20 km

Contents	
2	House price growth
3	Sales map
4	Average prices + distribution
5	Transaction timeline
6	Depth of market



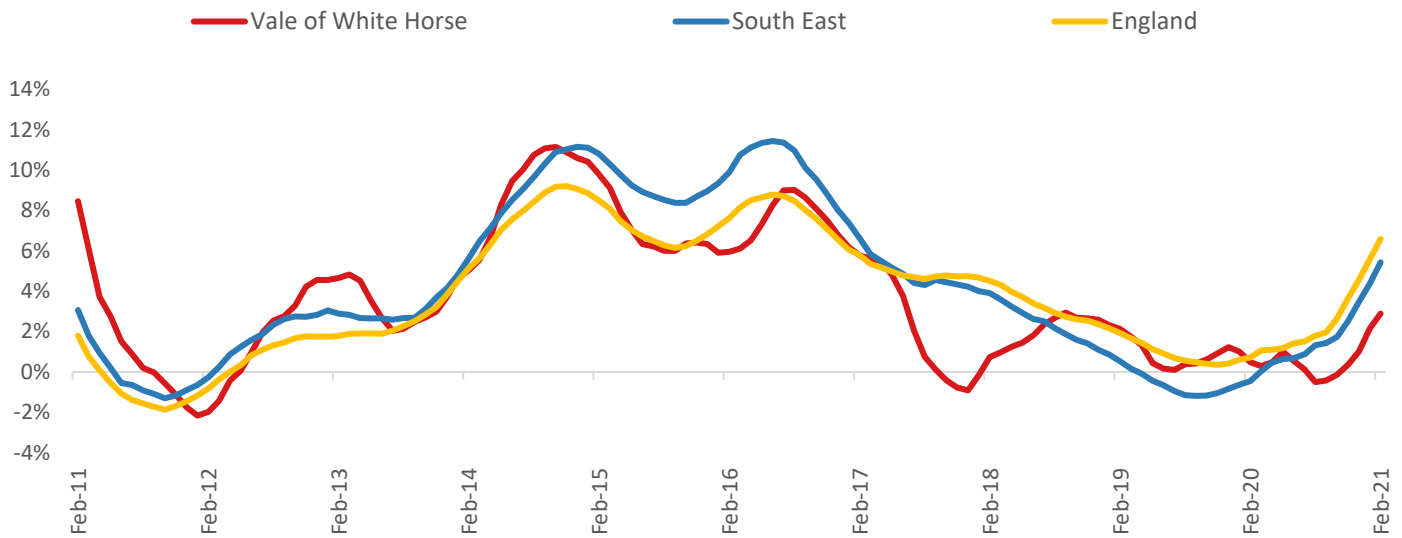
*Click the main map above to visit our Cities, Towns & Villages page, for local analysis of the locations shown and over 2000 more*

**Headline Data**

	Current level	3 month	Annual	5 year	10 year
House prices	£365,852	2.5%	2.9%	12.5%	41.0%
Transactions	1,852	-2.0%	-20.9%	-21.8%	9.3%

**House Price Growth (February 2021 data)**

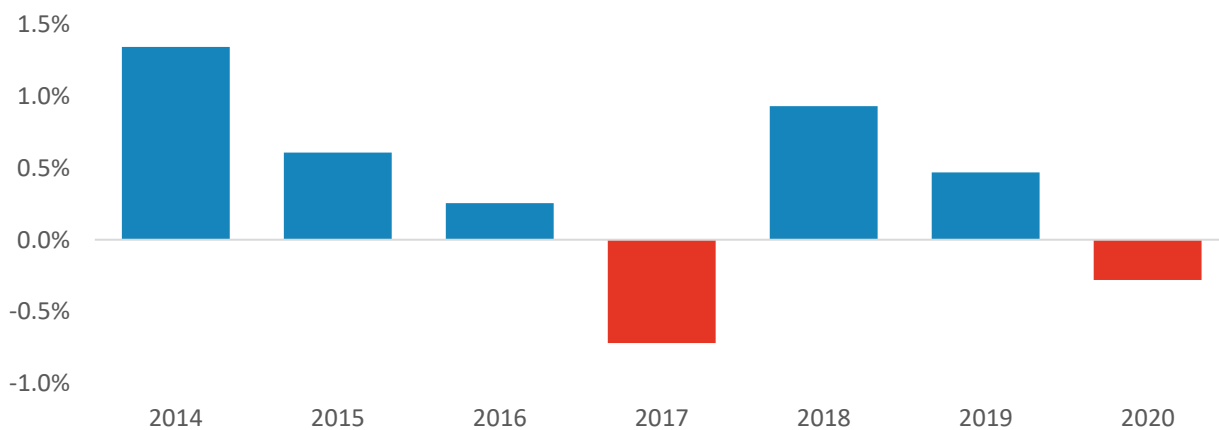
*Annual Change in House Prices*



House prices in Vale of White Horse grew by 2.9% in the 12 months to February 2021 (based on 6-month smoothed data). By comparison national house prices grew by 6.6% and prices in the South East grew by 5.4% over the same period.

Vale of White Horse house prices are now 36.3% above their previous peak in 2007, compared to +42.8% for the South East and +36.1% across England.

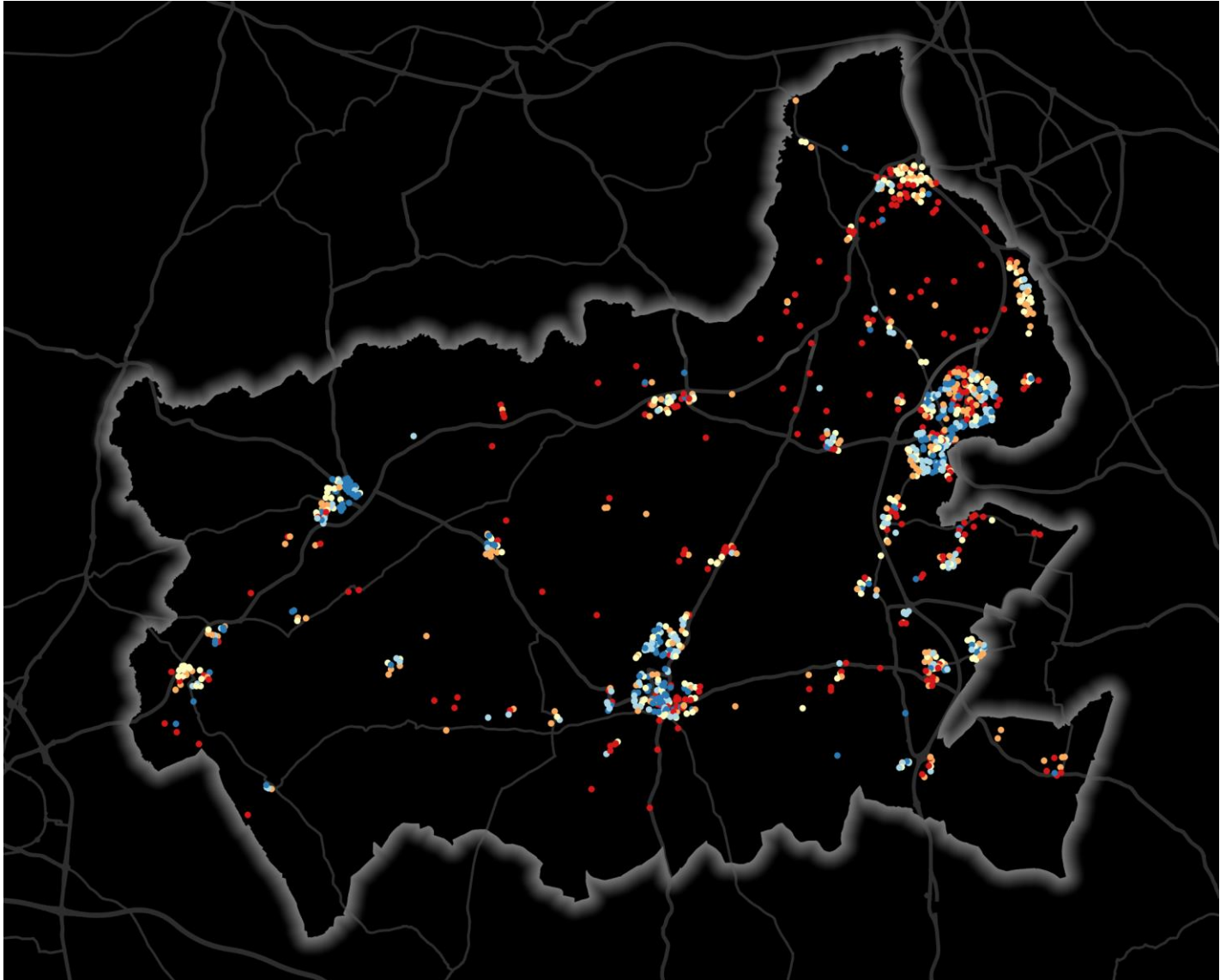
*Year-To-Date Change in House Prices, December to February*



Local prices have fallen by 0.3% in 2021 so far, compared to growth of 0.5% over the same period last year.

## House Price Map

12 months to February 2021



Each point is one postcode, coloured by the average value relative to all sales in this local authority (price bands are LA-specific quintiles).

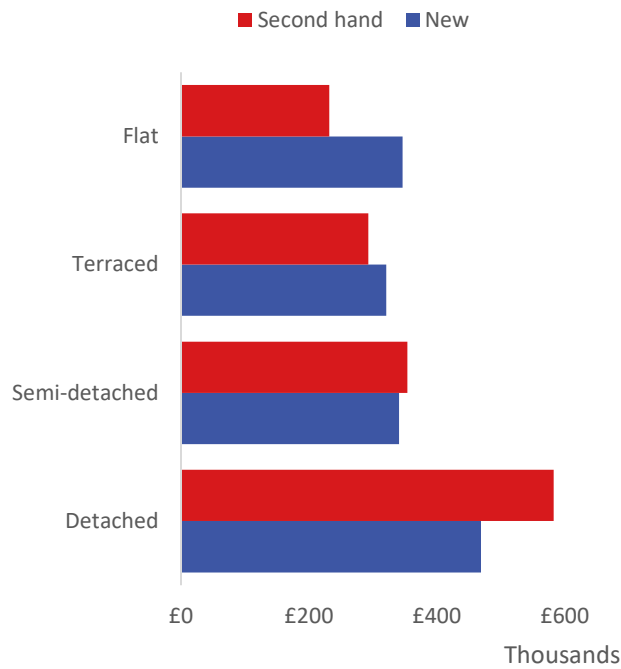
### Map Key



	Min	Max	
	Up to	£265,000	1st quintile / lowest 20%
£265,000		£316,000	2nd quintile
£316,000		£385,000	3rd quintile
£385,000		£513,000	4th quintile
£513,000		and over	5th quintile / highest 20%

### Average House Price by Property Type

12 months to February 2021



	New	Second hand
Flat	£346,617	£231,860
Terraced	£320,874	£293,062
Semi-detached	£340,916	£353,807
Detached	£468,838	£582,468

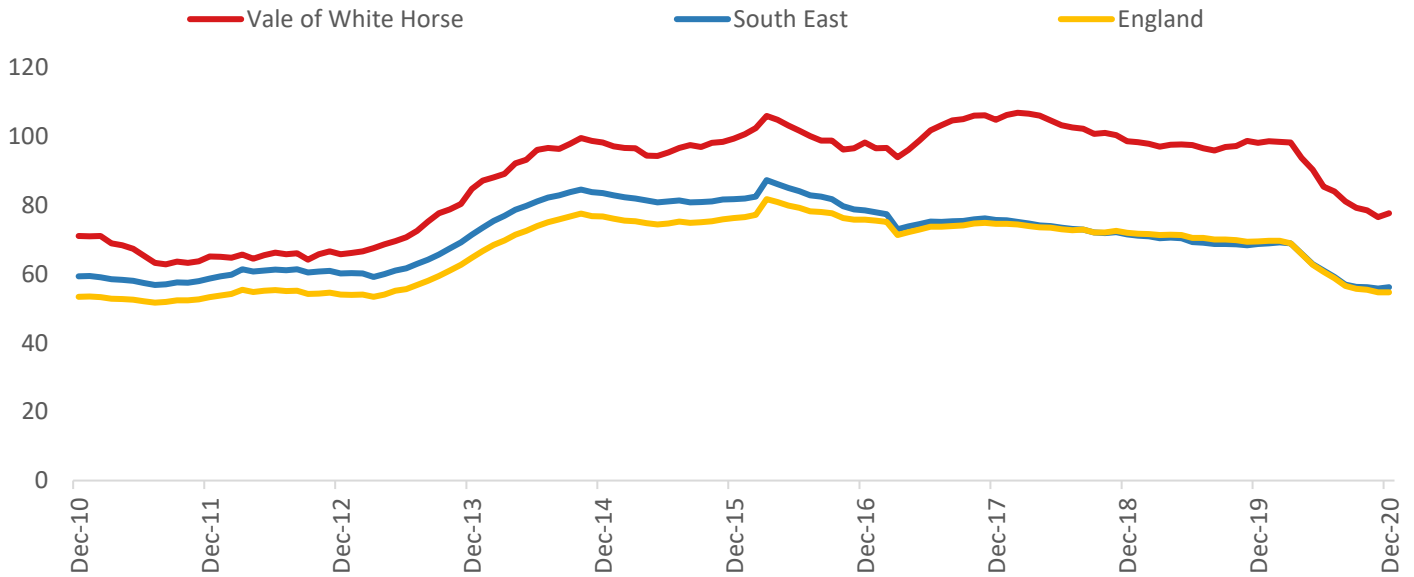
### House Price Distribution by Year

All properties, by price band and calendar year (2020 = year to date)

	1997	2002	2007	2012	2017	2019	2020
Under £100k	64%	7%	2%	1%	0%	1%	0%
£100-200k	29%	59%	28%	25%	8%	8%	8%
£200-300k	5%	21%	40%	38%	28%	28%	28%
£300-400k	1%	7%	14%	18%	32%	32%	30%
£400-500k	0%	4%	8%	8%	15%	16%	15%
£500k-1m	0%	2%	8%	9%	15%	14%	18%
£1-2m	0%	0%	1%	1%	2%	2%	2%
Over £2m	0%	0%	0%	0%	0%	0%	0%

### Transactions (December 2020 data)

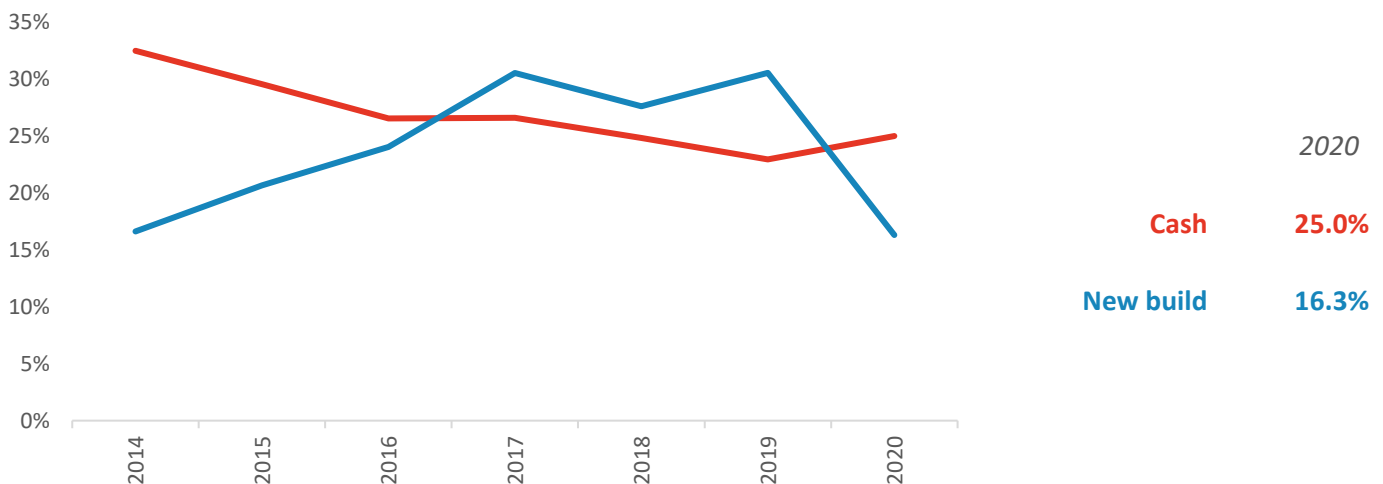
Annual Transactions, Indexed (2001-05 average = 100)



There were 1,852 transactions in Vale of White Horse during the 12 months to December 2020. This is 78% of the average from 2001-05 and suggests activity is below pre-downturn levels.

Transactions in Vale of White Horse have fallen by 20.9% since 2014, compared to changes of -32.8% for South East and -28.7% for England.

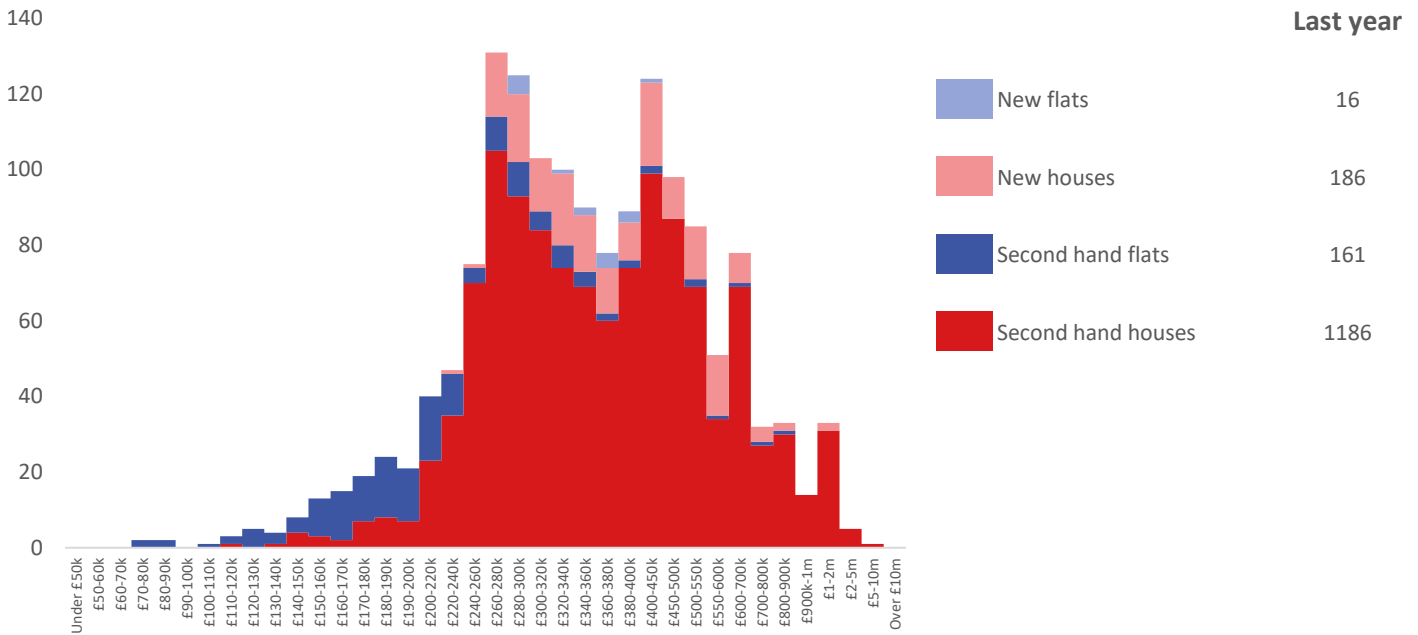
### Cash and New Build Sales as % of Total, by Year



Note: The data on this page EXCLUDES transactions identified as transfers under a power of sale/repossessions, buy-to-lets (where they can be identified by a mortgage), and transfers to non-private individuals - i.e. it comprises only Land Registry 'A' data.

### Depth of Market by Property Type

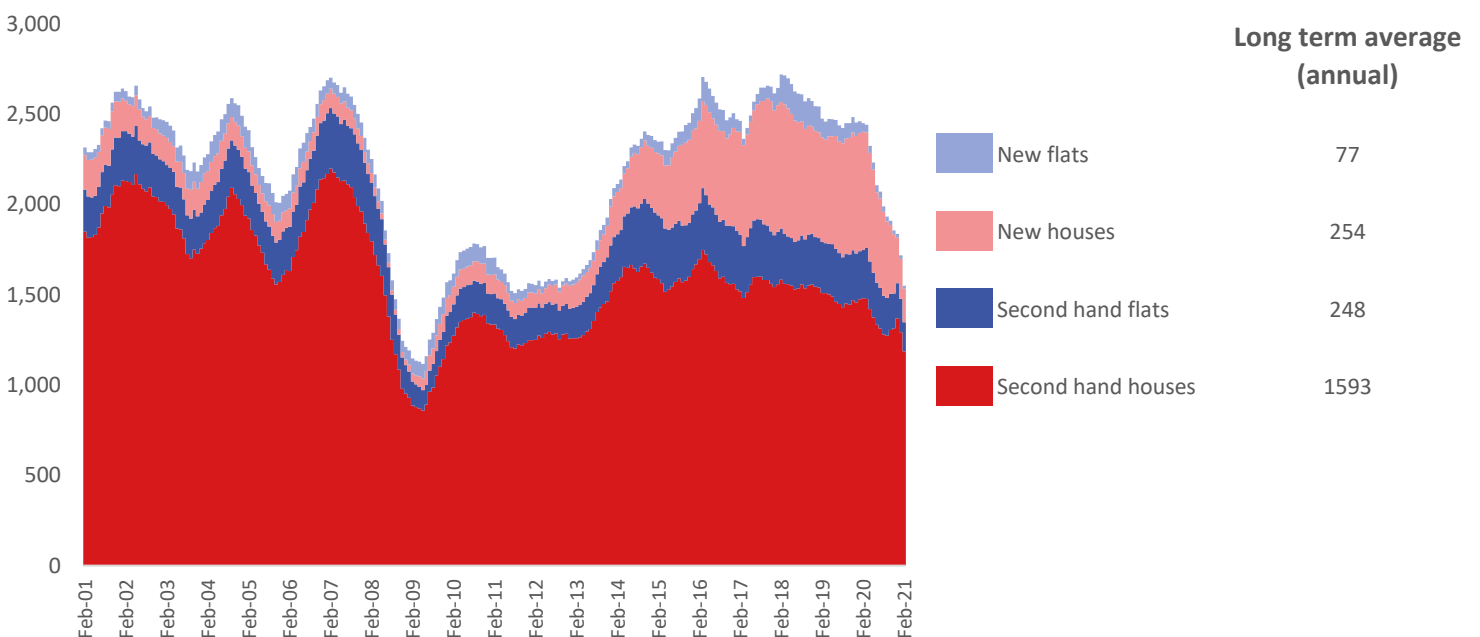
12 months to February 2021



The most common property type transacted over the past 12 months in Vale of White Horse was 'second hand houses' with 1,186 sales, 77% of all sales over the same period. The annual total of 1,549 transactions is equivalent to 71% of the long term average level of activity.

### Timeline of Transactions by Type

Rolling 12 months, past 20 years



The most common property type transacted over the past 20 years was 'second hand houses' with the equivalent of 1,593 sales per year on average, making up 73% of the typical annual total over that period.