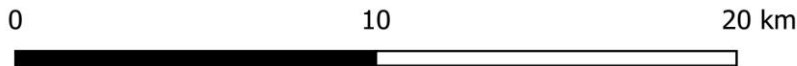


July 2022

Powered By
BuiltPlace

Detailed Price Paid Report:

Bradford



Contents	
2	House price growth
3	Sales map
4	Average prices + distribution
5	Transaction timeline
6	Depth of market



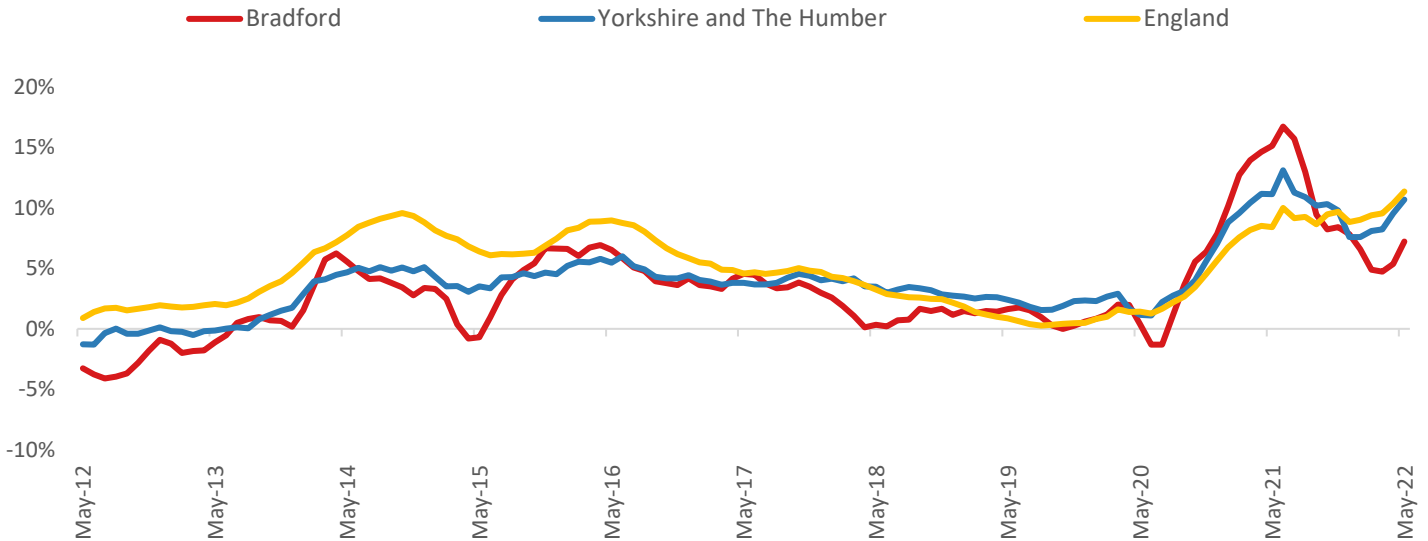
Click the main map above to visit our Cities, Towns & Villages page, for local analysis of the locations shown and over 2000 more

Headline Data

	Current level	3 month	Annual	5 year	10 year
House prices	£168,015	2.3%	7.2%	26.3%	45.8%
Transactions	7,222	-9.8%	8.3%	3.3%	55.2%

House Price Growth (May 2022 data)

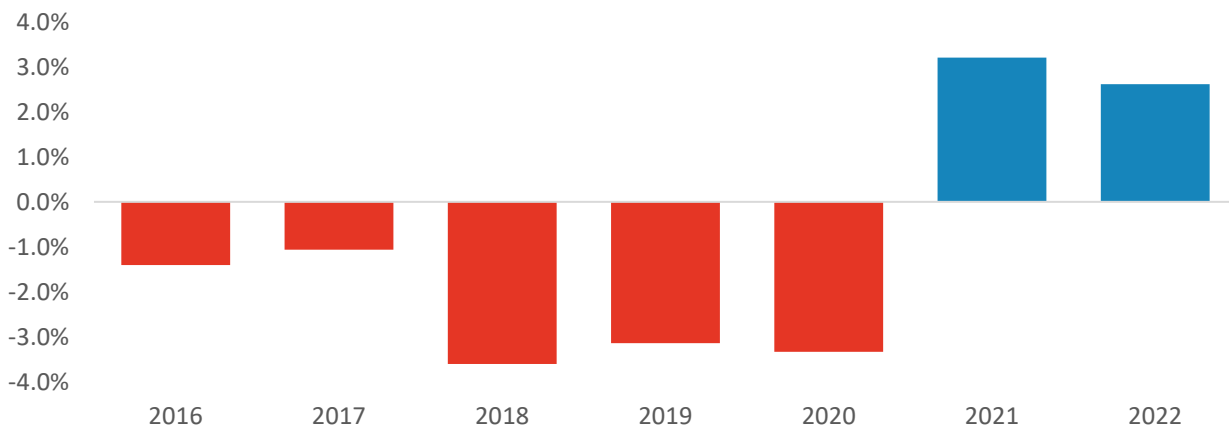
Annual Change in House Prices



House prices in Bradford grew by 7.2% in the 12 months to May 2022 (based on 3-month smoothed data). By comparison national house prices grew by 11.3% and prices in Yorkshire and The Humber grew by 10.7% over the same period.

Bradford house prices are now 19.0% above their previous peak in 2007, compared to +34.1% for Yorkshire and The Humber and +53.8% across England.

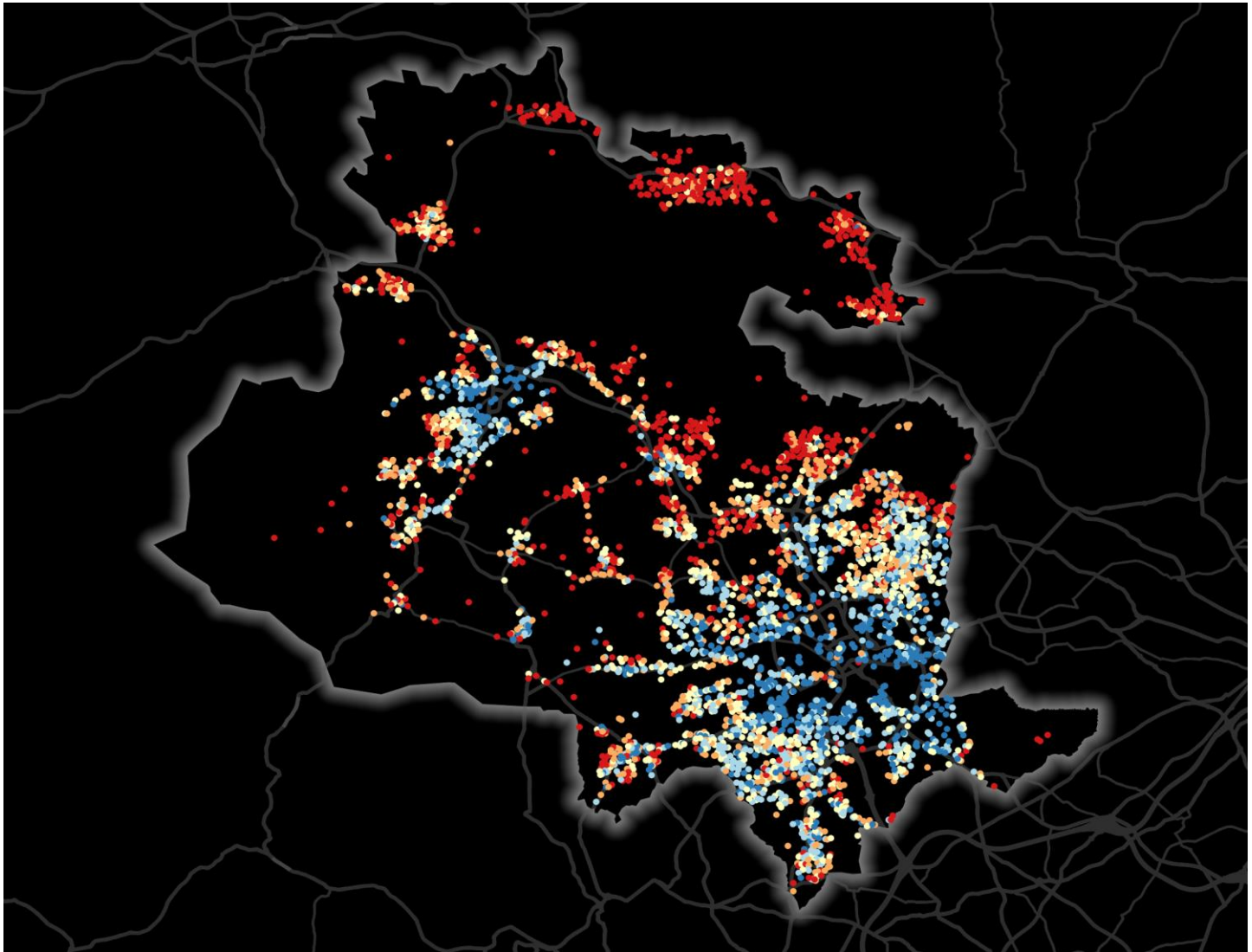
Year-To-Date Change in House Prices, December to May



Local prices have grown by 2.6% in 2022 so far, compared to growth of 3.2% over the same period last year.

House Price Map

12 months to May 2022



Each point is one postcode, coloured by the average value relative to all sales in this local authority (price bands are LA-specific quintiles).

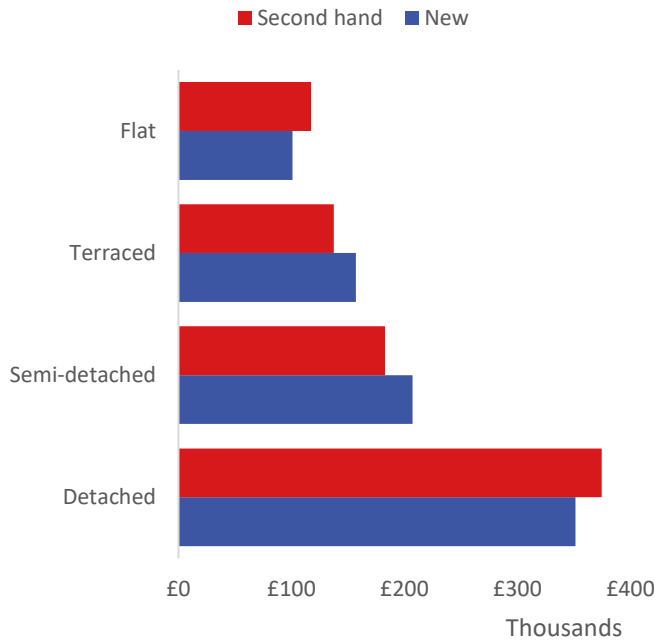
Map Key



	Min	Max	
	Up to	£90,000	1st quintile / lowest 20%
	£90,000	£126,000	2nd quintile
	£126,000	£165,000	3rd quintile
	£165,000	£242,000	4th quintile
	£242,000	and over	5th quintile / highest 20%

Average House Price by Property Type

12 months to May 2022



	New	Second hand
Flat	£100,994	£117,393
Terraced	£156,902	£137,341
Semi-detached	£207,157	£182,857
Detached	£351,282	£374,406

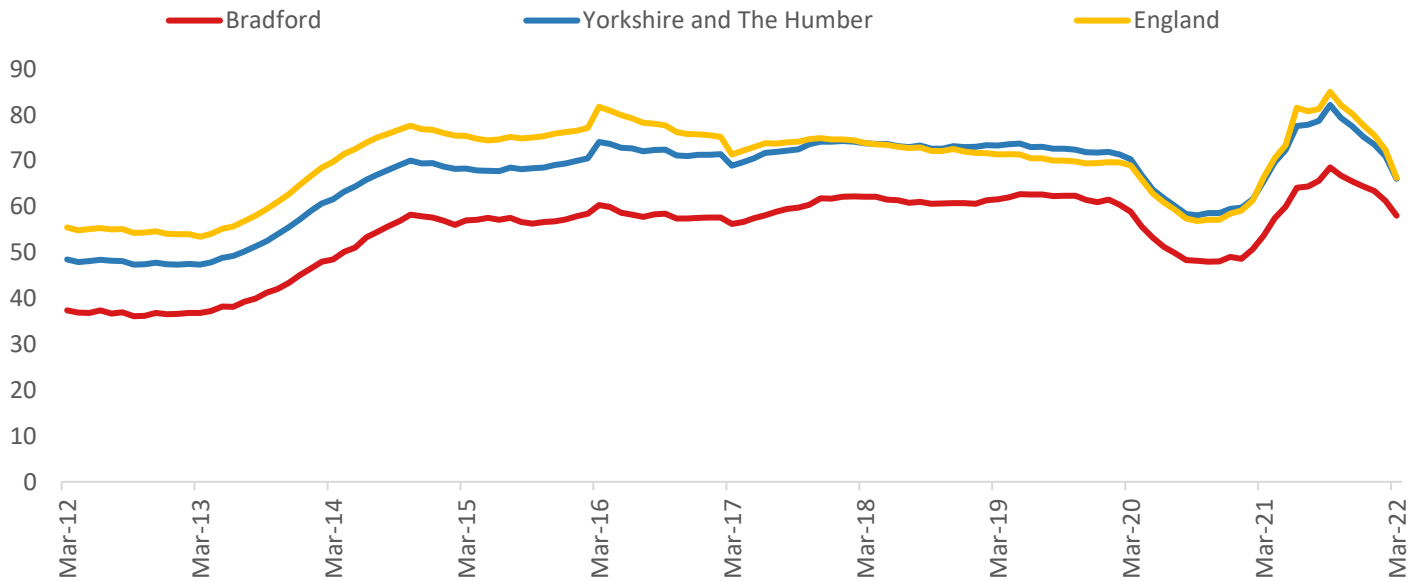
House Price Distribution by Year

All properties, by price band and calendar year (2020 = year to date)

	1997	2002	2007	2012	2017	2019	2020
Under £100k	91%	80%	29%	40%	35%	26%	24%
£100-200k	8%	16%	56%	43%	43%	45%	50%
£200-300k	1%	3%	10%	11%	12%	16%	15%
£300-400k	0%	1%	3%	3%	5%	7%	5%
£400-500k	0%	0%	1%	2%	2%	3%	3%
£500k-1m	0%	0%	1%	1%	2%	3%	3%
£1-2m	0%	0%	0%	0%	0%	0%	0%
Over £2m	0%	0%	0%	0%	0%	0%	0%

Transactions (March 2022 data)

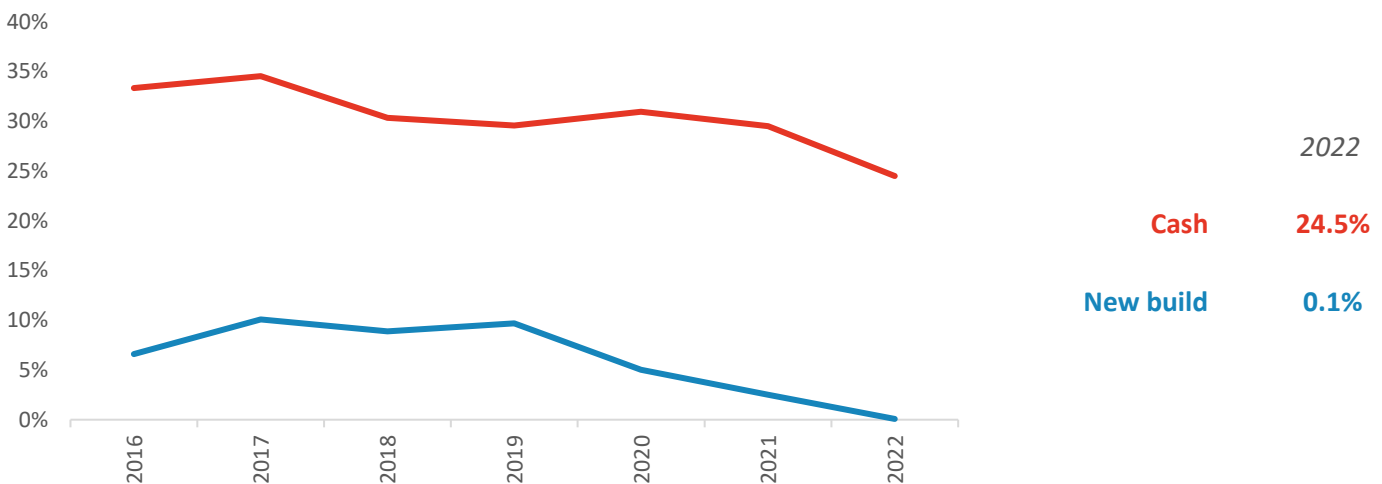
Annual Transactions, Indexed (2001-05 average = 100)



There were 7,222 transactions in Bradford during the 12 months to March 2022. This is 58% of the average from 2001-05 and suggests activity is significantly below pre-downturn levels.

Transactions in Bradford have grown by 0.7% since 2014, compared to changes of -5.0% for Yorkshire and The Humber and -13.6% for England.

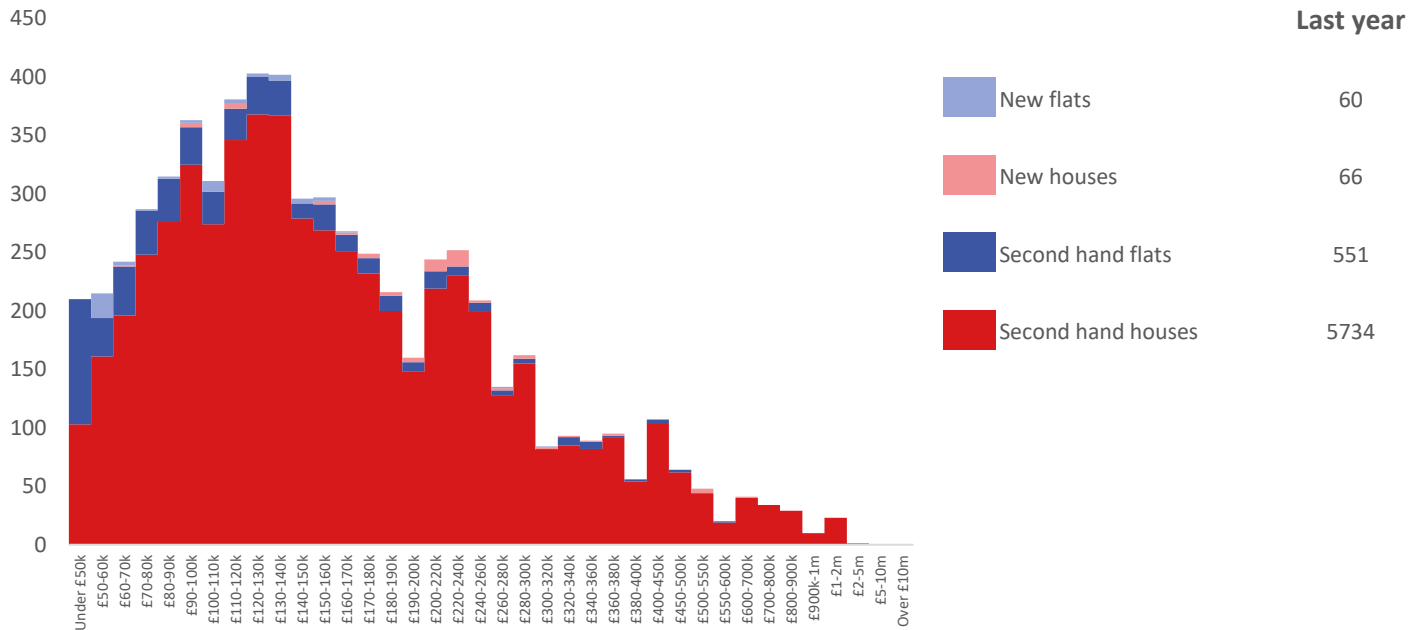
Cash and New Build Sales as % of Total, by Year



Note: The data on this page EXCLUDES transactions identified as transfers under a power of sale/repossessions, buy-to-lets (where they can be identified by a mortgage), and transfers to non-private individuals - i.e. it comprises only Land Registry 'A' data.

Depth of Market by Property Type

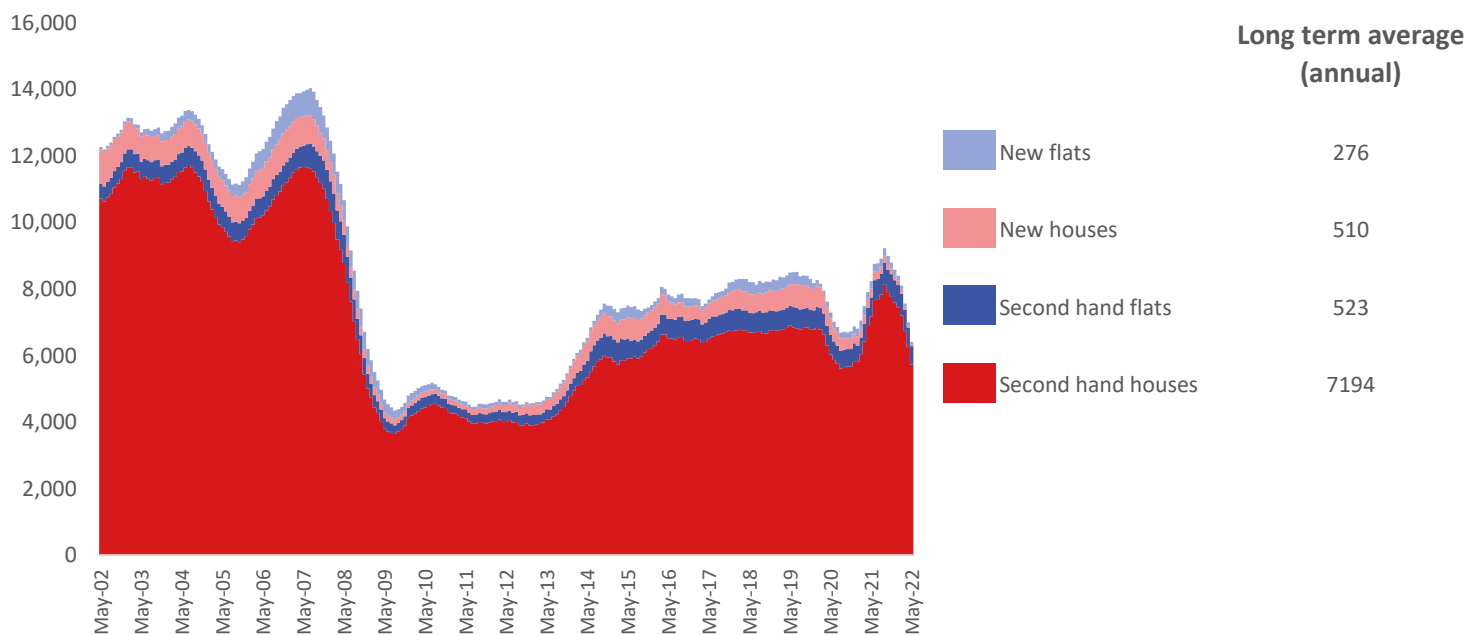
12 months to May 2022



The most common property type transacted over the past 12 months in Bradford was 'second hand houses' with 5,734 sales, 89% of all sales over the same period. The annual total of 6,411 transactions is equivalent to 75% of the long term average level of activity.

Timeline of Transactions by Type

Rolling 12 months, past 20 years



The most common property type transacted over the past 20 years was 'second hand houses' with the equivalent of 7,194 sales per year on average, making up 85% of the typical annual total over that period.