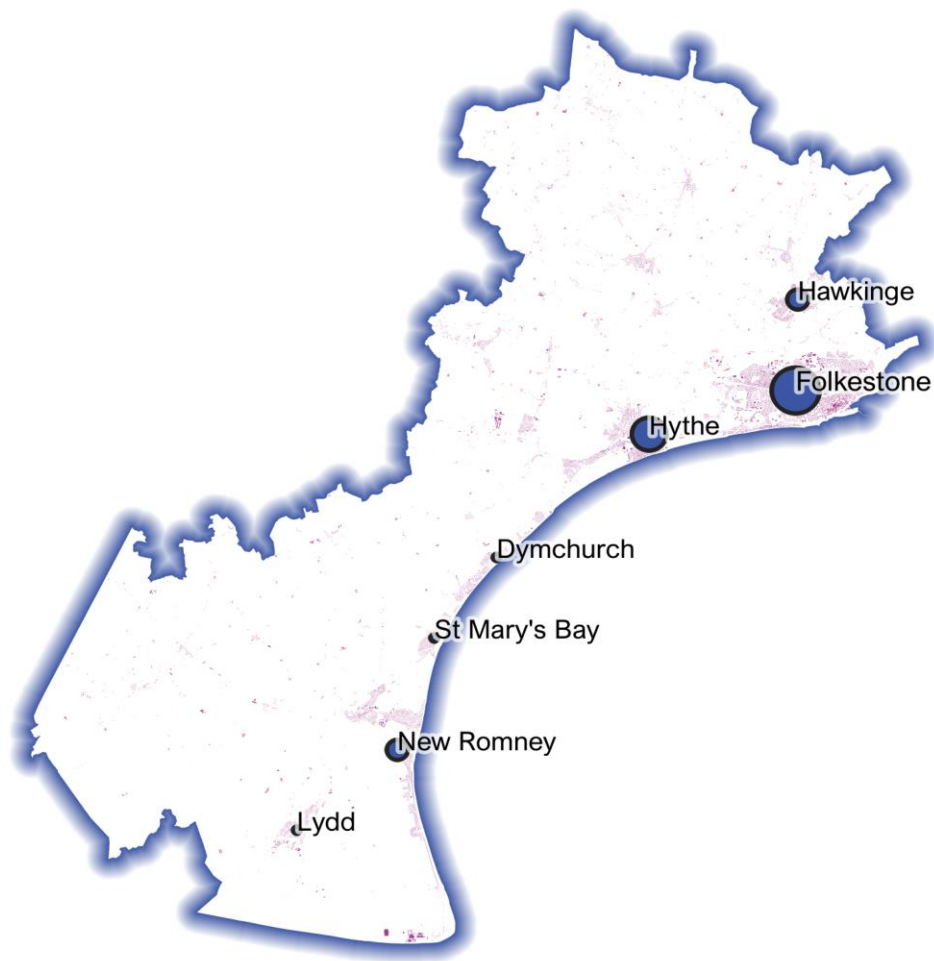


July 2022

Powered By  
BuiltPlace

# Detailed Price Paid Report: Folkestone and Hythe



0 10 20 km

| Contents |                               |
|----------|-------------------------------|
| 2        | House price growth            |
| 3        | Sales map                     |
| 4        | Average prices + distribution |
| 5        | Transaction timeline          |
| 6        | Depth of market               |



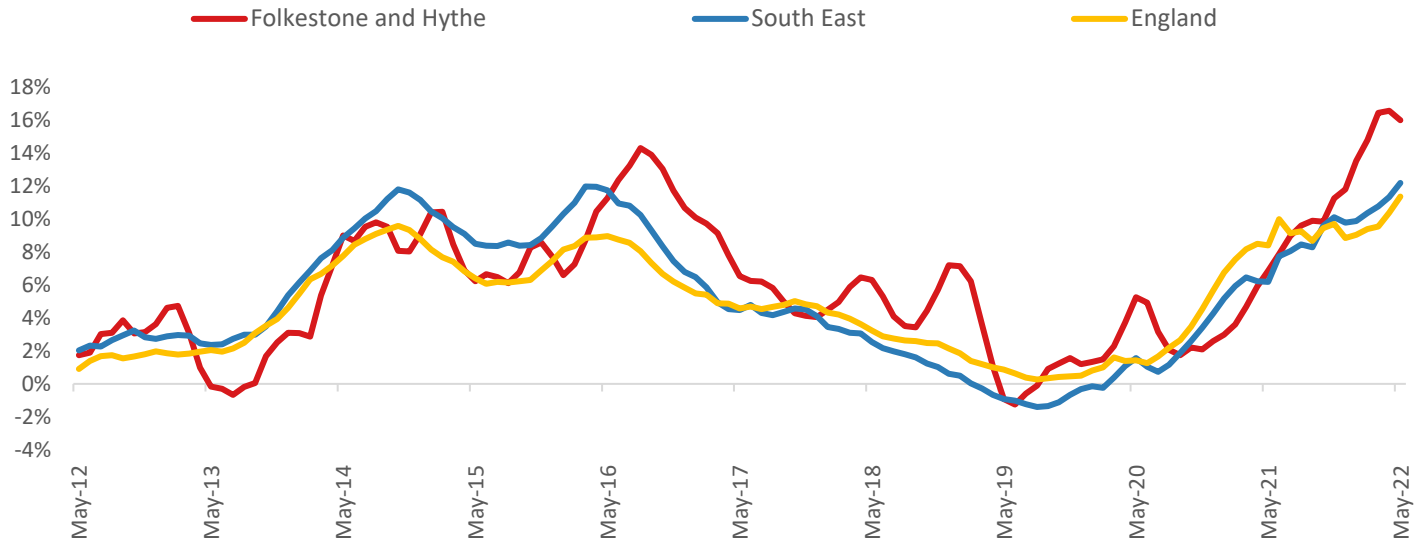
Click the main map above to visit our [Cities, Towns & Villages](#) page, for local analysis of the locations shown and over 2000 more

**Headline Data**

|              | Current level | 3 month | Annual | 5 year | 10 year |
|--------------|---------------|---------|--------|--------|---------|
| House prices | £322,797      | 2.7%    | 16.0%  | 37.4%  | 88.1%   |
| Transactions | 2,109         | -14.4%  | 10.6%  | 0.6%   | 38.0%   |

**House Price Growth (May 2022 data)**

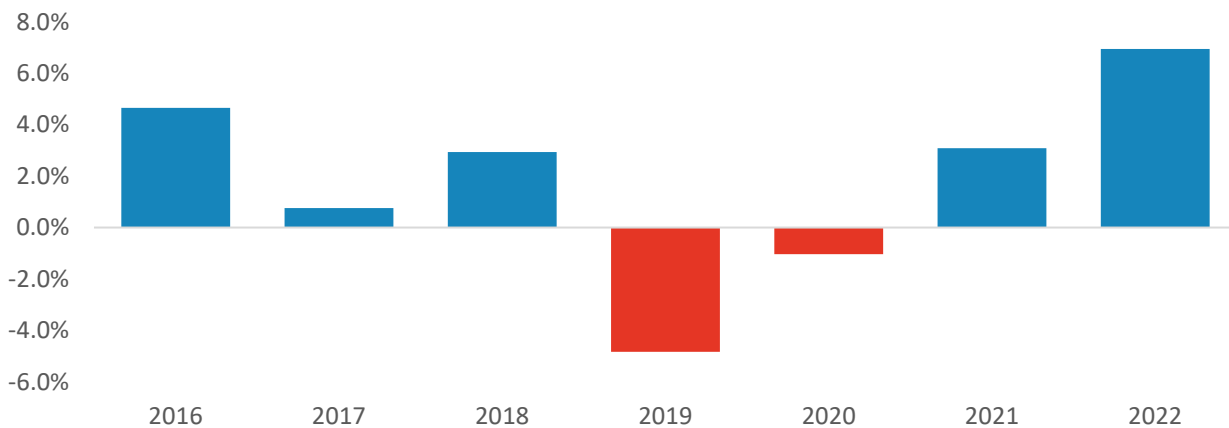
*Annual Change in House Prices*



House prices in Folkestone and Hythe grew by 16.0% in the 12 months to May 2022 (based on 3-month smoothed data). By comparison national house prices grew by 11.3% and prices in the South East grew by 12.2% over the same period.

Folkestone and Hythe house prices are now 64.4% above their previous peak in 2007, compared to +62.0% for the South East and +53.8% across England.

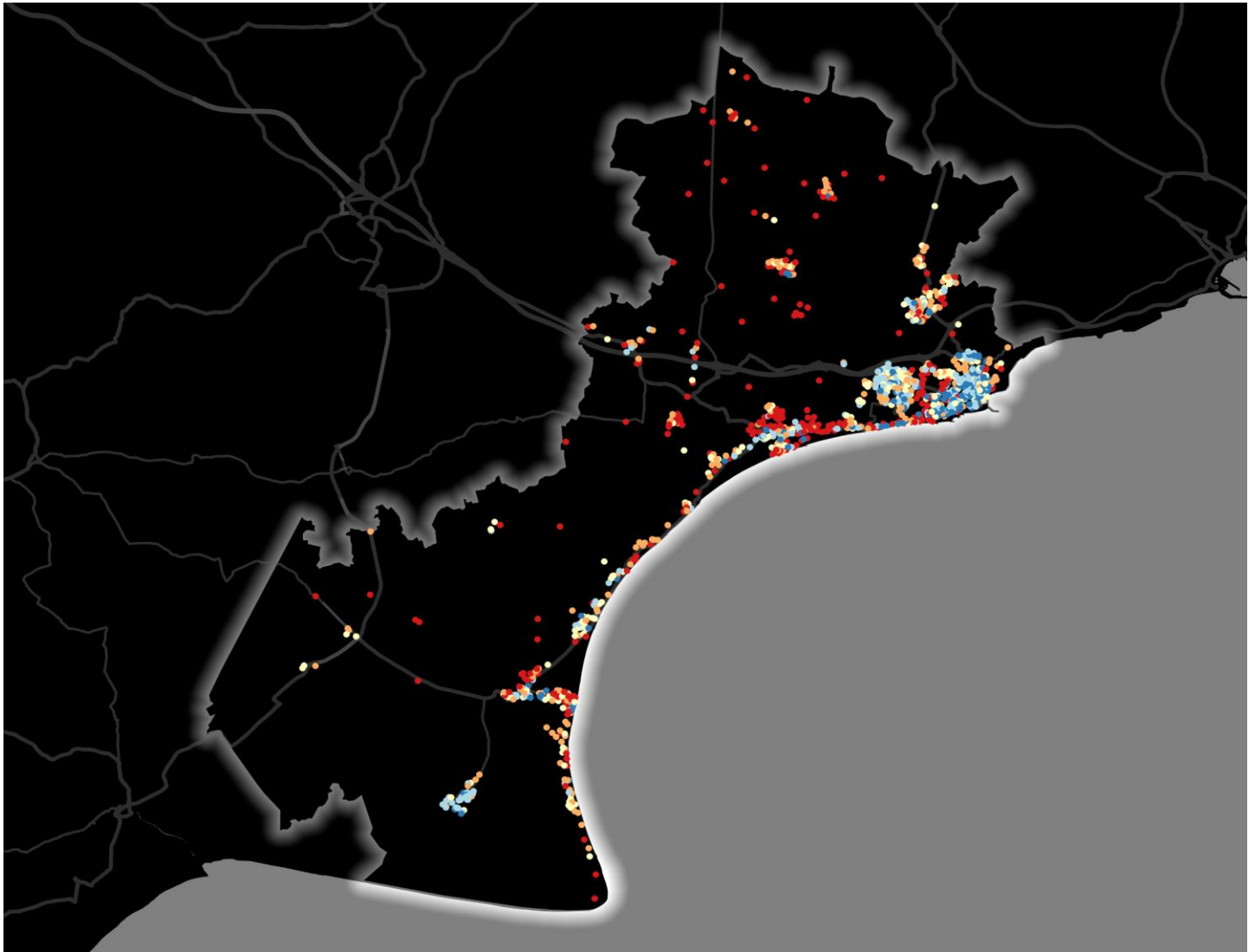
*Year-To-Date Change in House Prices, December to May*



Local prices have grown by 7.0% in 2022 so far, compared to growth of 3.1% over the same period last year.

## House Price Map

12 months to May 2022



Each point is one postcode, coloured by the average value relative to all sales in this local authority (price bands are LA-specific quintiles).

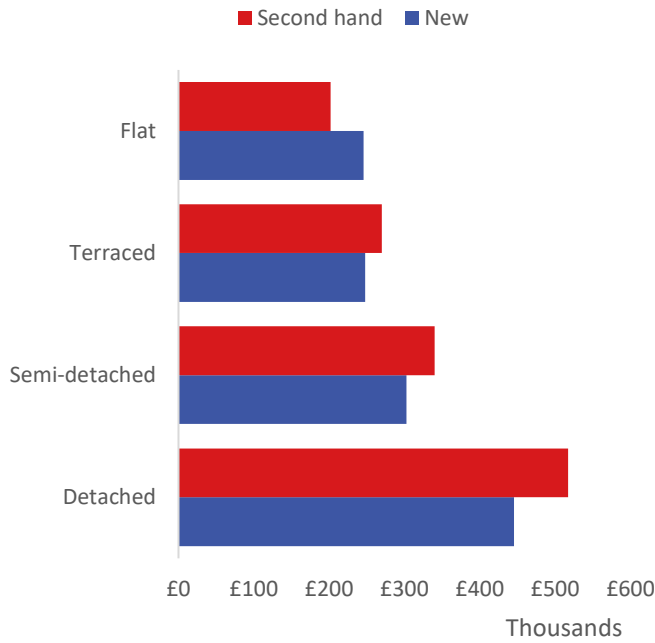
### Map Key



|  | Min      | Max      |                            |
|--|----------|----------|----------------------------|
|  | Up to    | £208,000 | 1st quintile / lowest 20%  |
|  | £208,000 | £266,000 | 2nd quintile               |
|  | £266,000 | £322,000 | 3rd quintile               |
|  | £322,000 | £431,000 | 4th quintile               |
|  | £431,000 | and over | 5th quintile / highest 20% |

### Average House Price by Property Type

12 months to May 2022



|               | New      | Second hand |
|---------------|----------|-------------|
| Flat          | £245,833 | £202,069    |
| Terraced      | £247,611 | £270,071    |
| Semi-detached | £302,782 | £340,175    |
| Detached      | £445,437 | £517,205    |

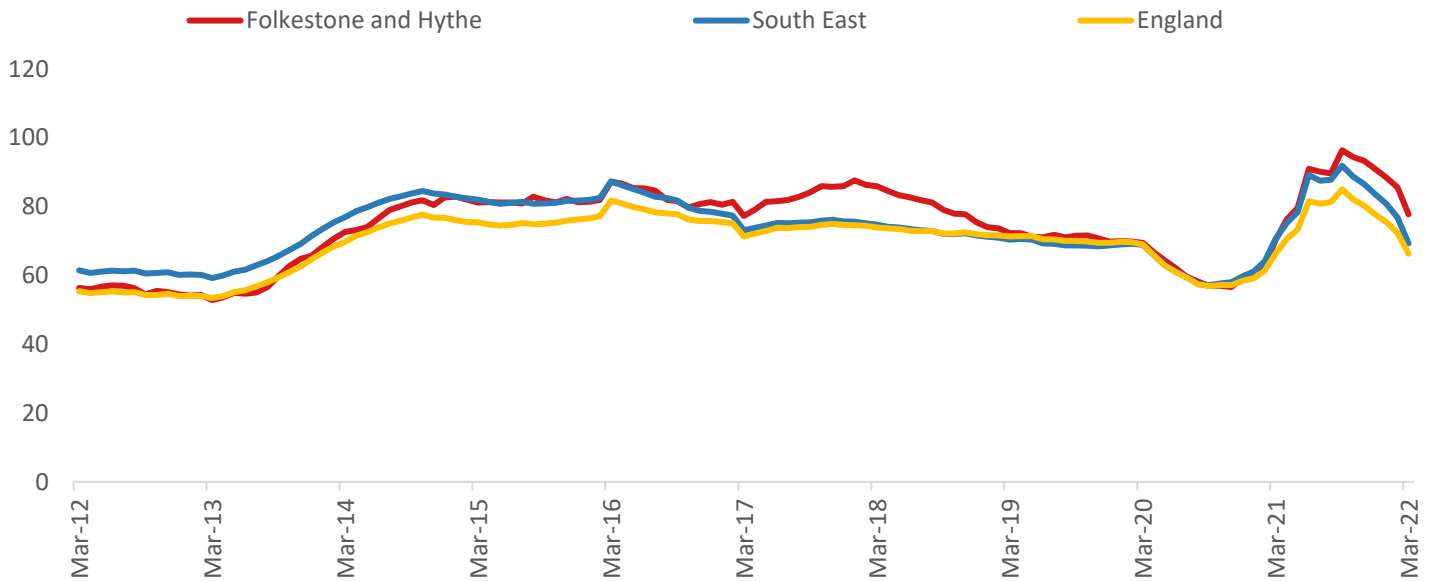
### House Price Distribution by Year

All properties, by price band and calendar year (2020 = year to date)

|             | 1997 | 2002 | 2007 | 2012 | 2017 | 2019 | 2020 |
|-------------|------|------|------|------|------|------|------|
| Under £100k | 87%  | 47%  | 6%   | 10%  | 5%   | 2%   | 2%   |
| £100-200k   | 12%  | 44%  | 54%  | 50%  | 28%  | 16%  | 16%  |
| £200-300k   | 1%   | 7%   | 27%  | 26%  | 38%  | 34%  | 35%  |
| £300-400k   | 0%   | 1%   | 7%   | 8%   | 17%  | 25%  | 22%  |
| £400-500k   | 0%   | 1%   | 3%   | 3%   | 7%   | 11%  | 11%  |
| £500k-1m    | 0%   | 0%   | 2%   | 2%   | 5%   | 11%  | 12%  |
| £1-2m       | 0%   | 0%   | 0%   | 0%   | 0%   | 1%   | 2%   |
| Over £2m    | 0%   | 0%   | 0%   | 0%   | 0%   | 0%   | 0%   |

### Transactions (March 2022 data)

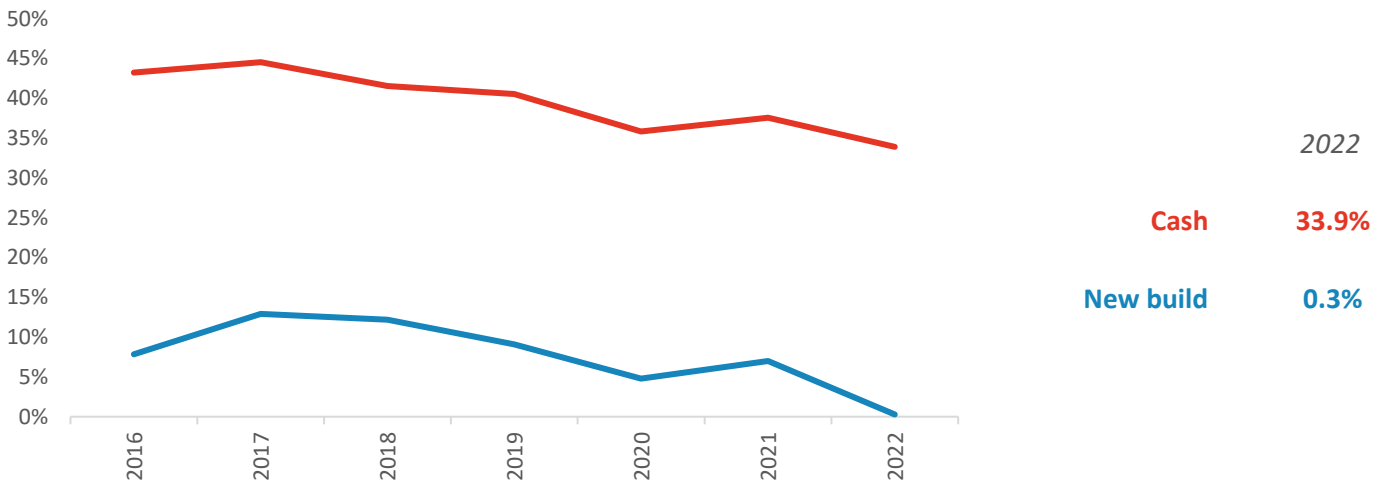
Annual Transactions, Indexed (2001-05 average = 100)



There were 2,109 transactions in Folkestone and Hythe during the 12 months to March 2022. This is 78% of the average from 2001-05 and suggests activity is below pre-downturn levels.

Transactions in Folkestone and Hythe have fallen by 5.9% since 2014, compared to changes of -17.1% for South East and -13.6% for England.

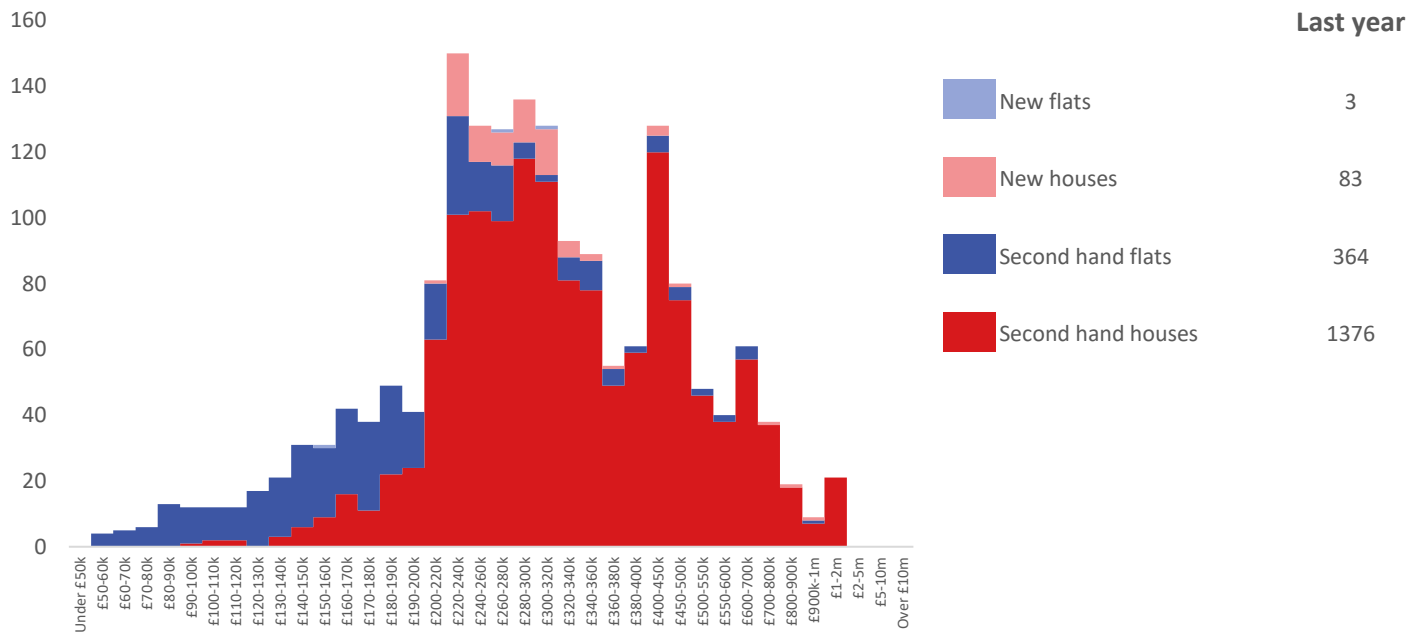
### Cash and New Build Sales as % of Total, by Year



Note: The data on this page EXCLUDES transactions identified as transfers under a power of sale/repossessions, buy-to-lets (where they can be identified by a mortgage), and transfers to non-private individuals - i.e. it comprises only Land Registry 'A' data.

## Depth of Market by Property Type

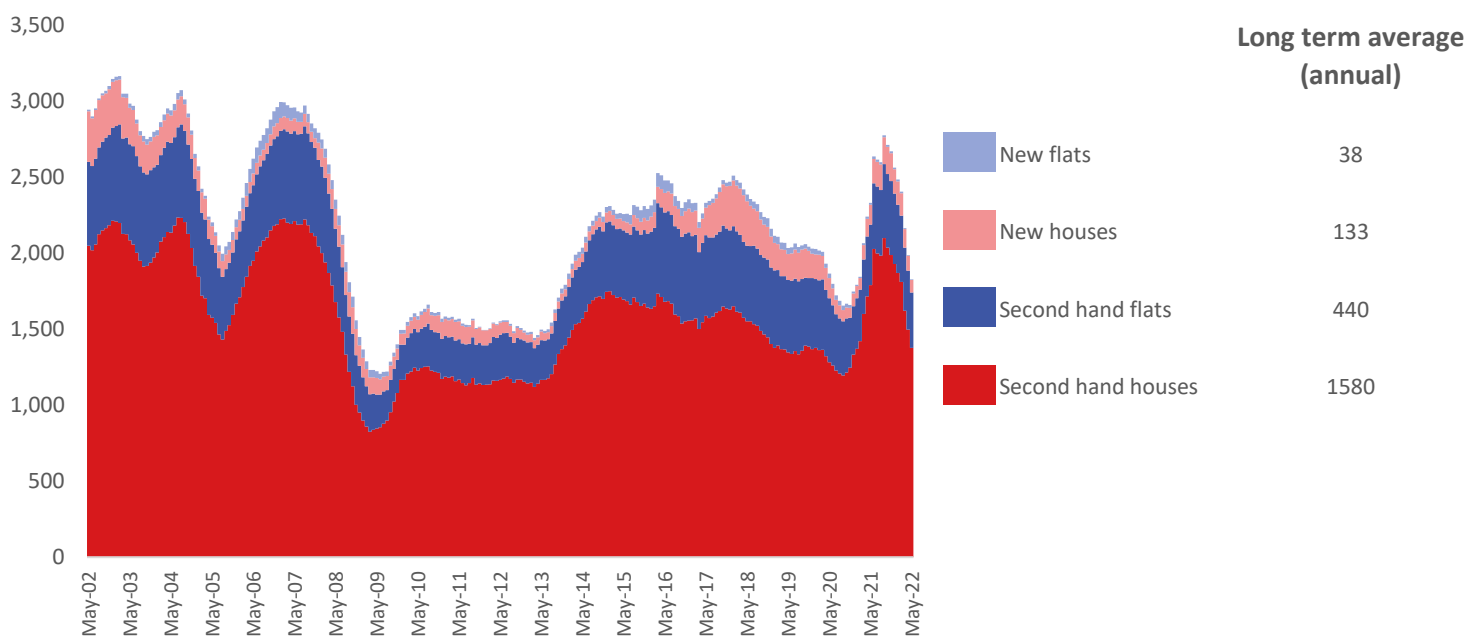
12 months to May 2022



The most common property type transacted over the past 12 months in Folkestone and Hythe was 'second hand houses' with 1,376 sales, 75% of all sales over the same period. The annual total of 1,826 transactions is equivalent to 83% of the long term average level of activity.

## Timeline of Transactions by Type

Rolling 12 months, past 20 years



The most common property type transacted over the past 20 years was 'second hand houses' with the equivalent of 1,580 sales per year on average, making up 72% of the typical annual total over that period.