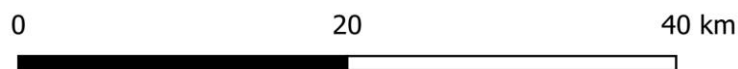
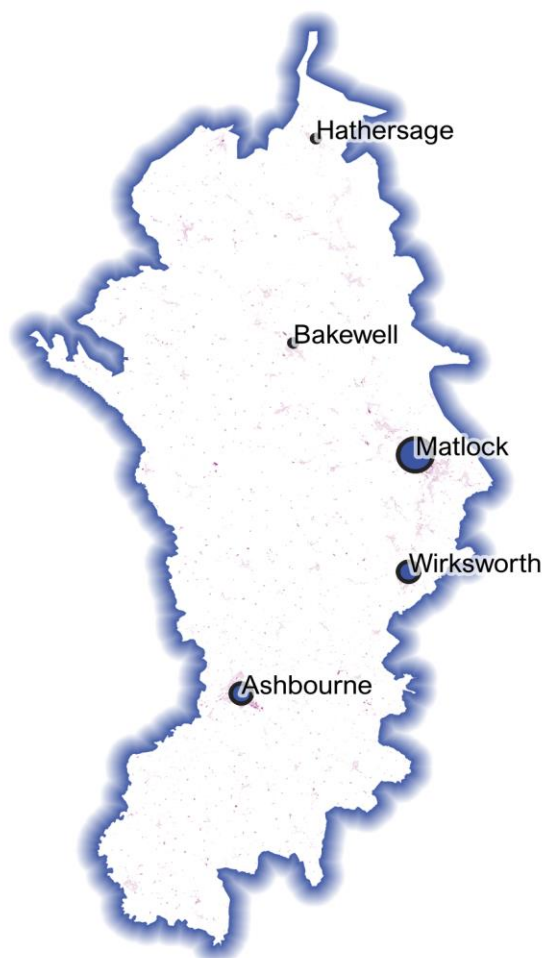


February 2023

Powered By
BuiltPlace

Detailed Price Paid Report:

Derbyshire Dales



Contents	
2	House price growth
3	Sales map
4	Average prices + distribution
5	Transaction timeline
6	Depth of market



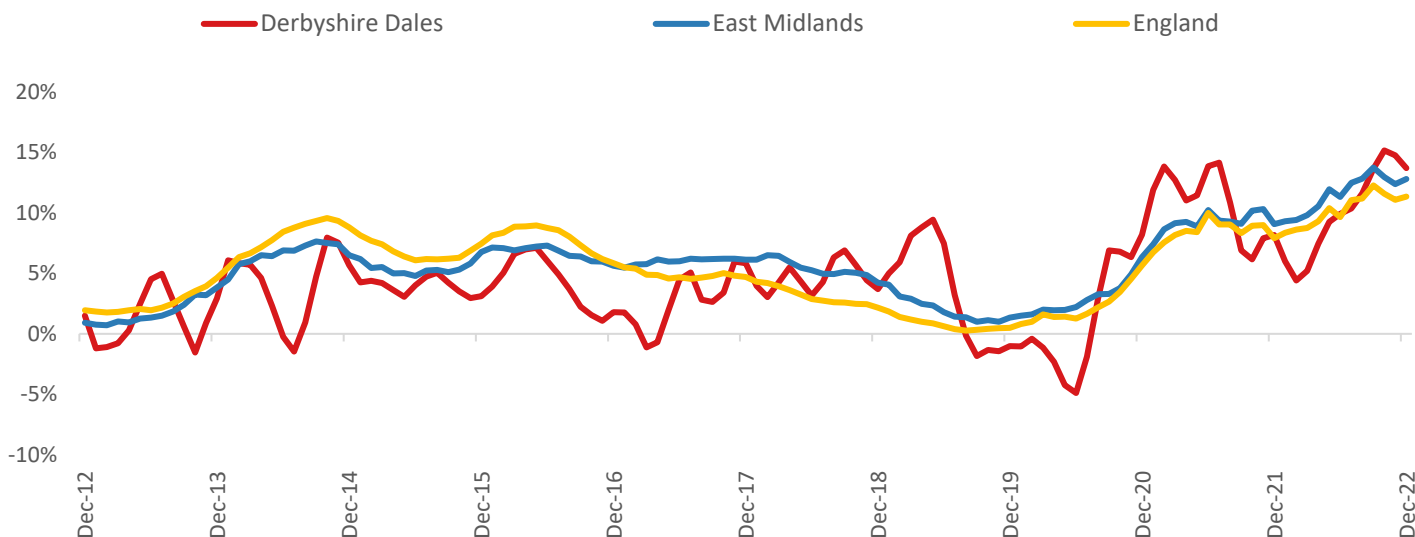
Click the main map above to visit our Cities, Towns & Villages page, for local analysis of the locations shown and over 2000 more

Headline Data

	Current level	3 month	Annual	5 year	10 year
House prices	£346,218	3.1%	13.7%	36.5%	65.0%
Transactions	923	-8.3%	-35.0%	-23.1%	5.2%

House Price Growth (December 2022 data)

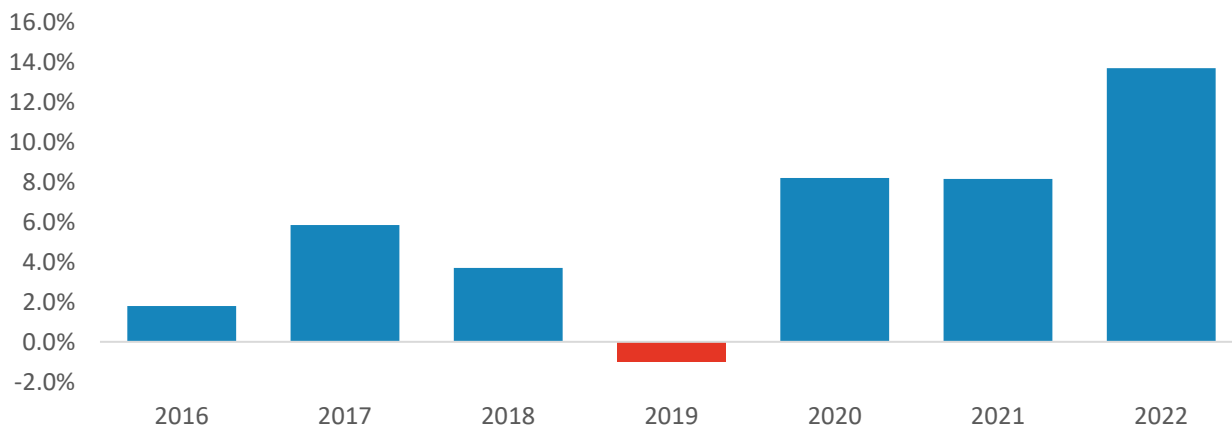
Annual Change in House Prices



House prices in Derbyshire Dales grew by 13.7% in the 12 months to December 2022 (based on 3-month smoothed data). By comparison national house prices grew by 11.3% and prices in the East Midlands grew by 12.8% over the same period.

Derbyshire Dales house prices are now 54.0% above their previous peak in 2007, compared to +60.9% for the East Midlands and +62.2% across England.

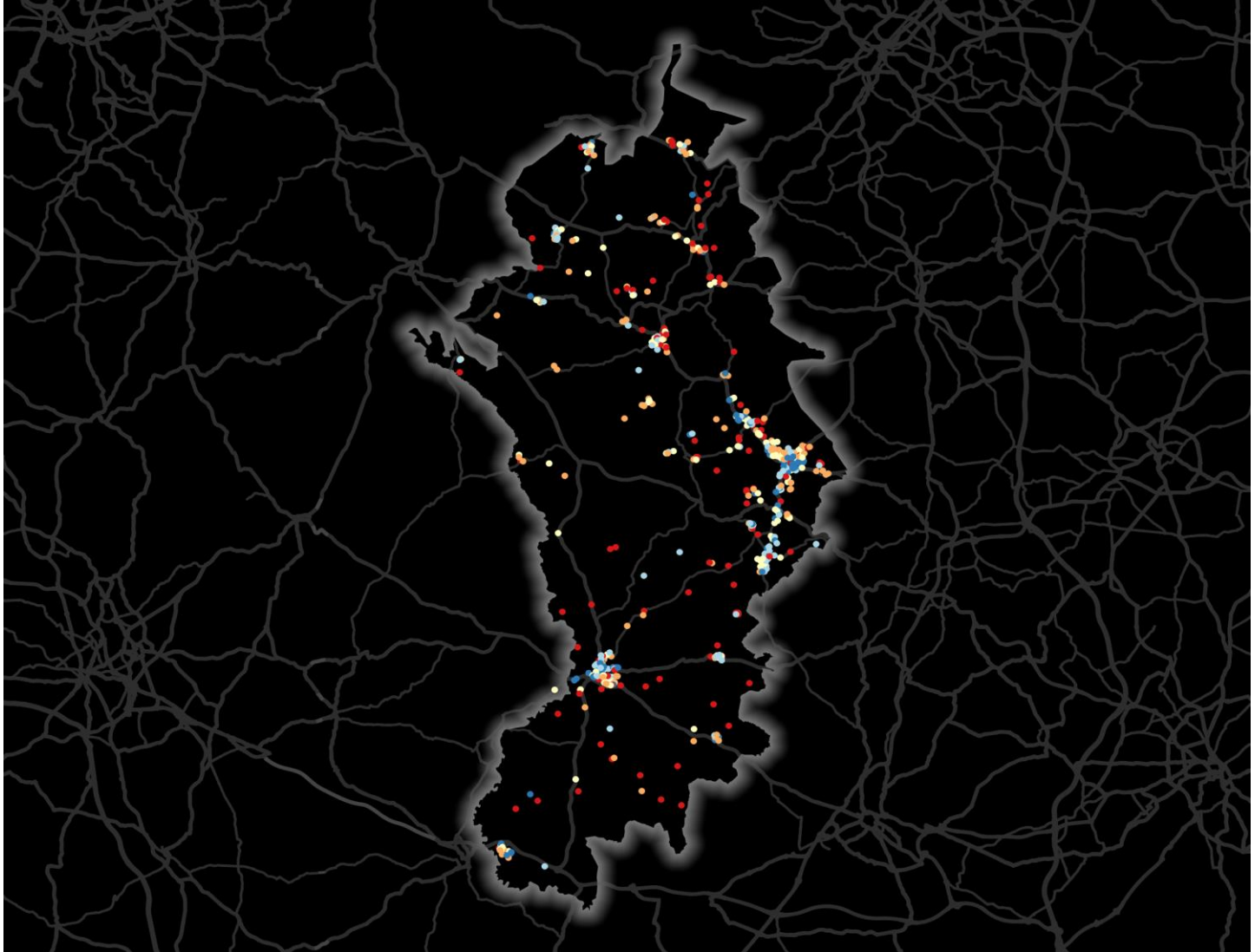
Year-To-Date Change in House Prices, December to December



Local prices have grown by 13.7% in 2022 so far, compared to growth of 8.2% over the same period last year.

House Price Map

12 months to December 2022



Each point is one postcode, coloured by the average value relative to all sales in this local authority (price bands are LA-specific quintiles).

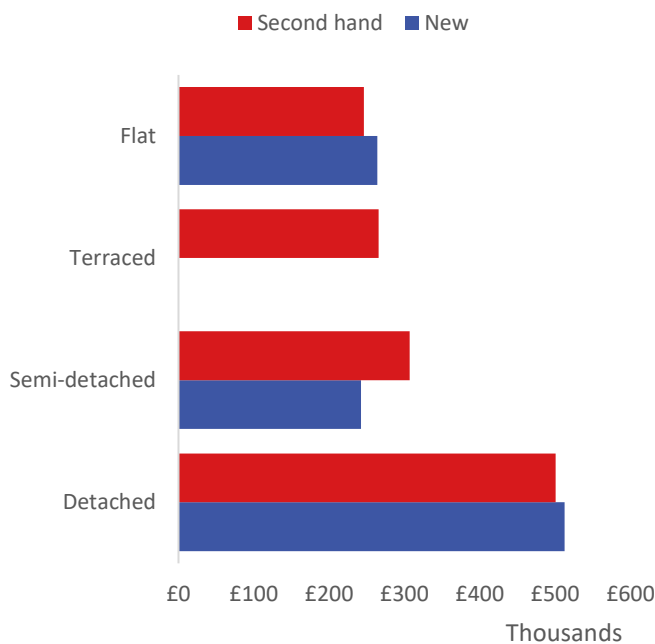
Map Key



	Min	Max	
	Up to	£208,000	1st quintile / lowest 20%
£208,000		£273,000	2nd quintile
£273,000		£357,000	3rd quintile
£357,000		£491,000	4th quintile
£491,000		and over	5th quintile / highest 20%

Average House Price by Property Type

12 months to December 2022



	New	Second hand
Flat	£264,067	£246,282
Terraced	No recorded sales	£265,768
Semi-detached	£242,223	£306,981
Detached	£512,692	£500,617

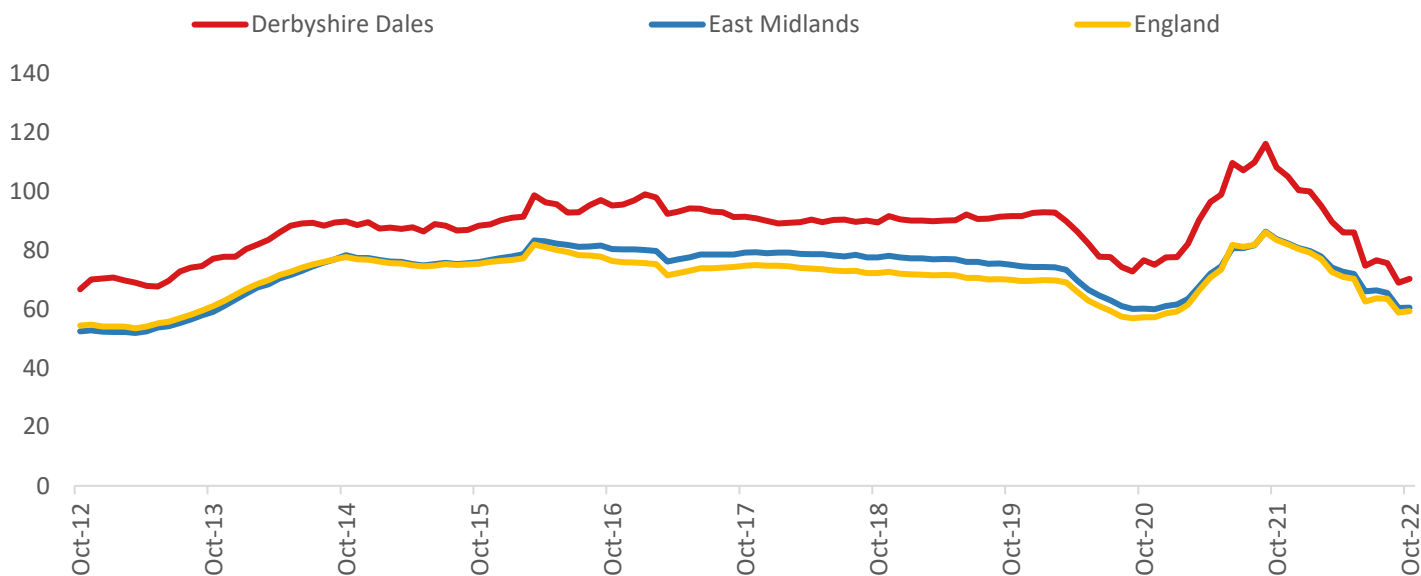
House Price Distribution by Year

All properties, by price band and calendar year (2022 = year to date)

	1997	2002	2007	2012	2017	2021	2022
Under £100k	72%	39%	3%	7%	1%	1%	1%
£100-200k	23%	42%	41%	44%	35%	22%	17%
£200-300k	3%	13%	30%	25%	30%	31%	31%
£300-400k	1%	3%	14%	11%	16%	20%	21%
£400-500k	0%	1%	7%	8%	9%	12%	12%
£500k-1m	0%	1%	5%	5%	7%	13%	17%
£1-2m	0%	0%	0%	0%	0%	1%	1%
Over £2m	0%	0%	0%	0%	0%	0%	0%

Transactions (October 2022 data)

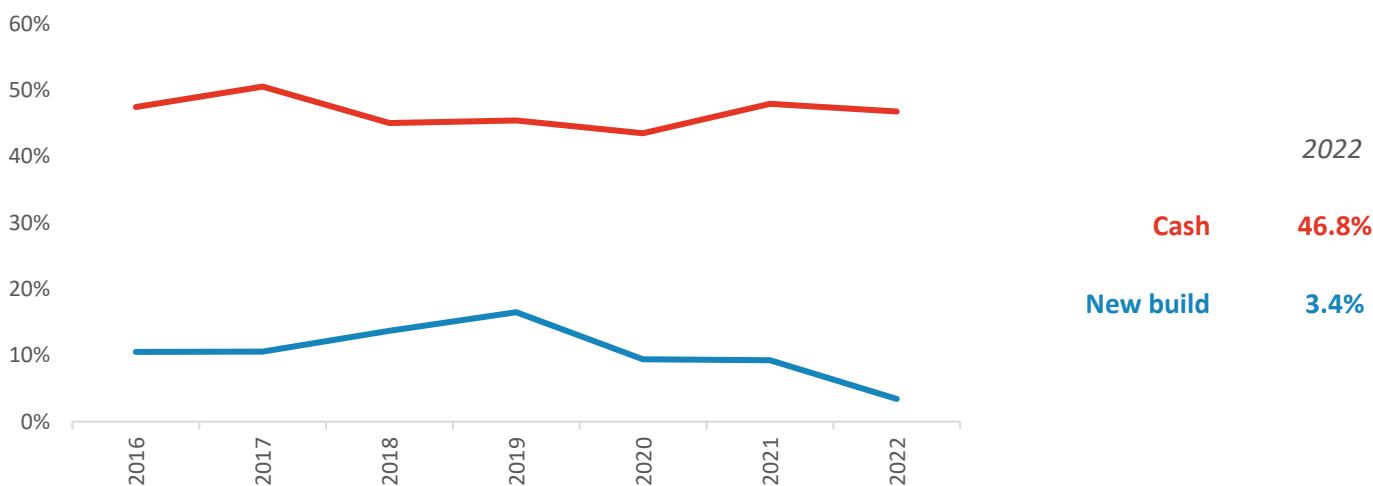
Annual Transactions, Indexed (2001-05 average = 100)



There were 923 transactions in Derbyshire Dales during the 12 months to October 2022. This is 70% of the average from 2001-05 and suggests activity is below pre-downturn levels.

Transactions in Derbyshire Dales have fallen by 21.6% since 2014, compared to changes of -21.8% for East Midlands and -22.8% for England.

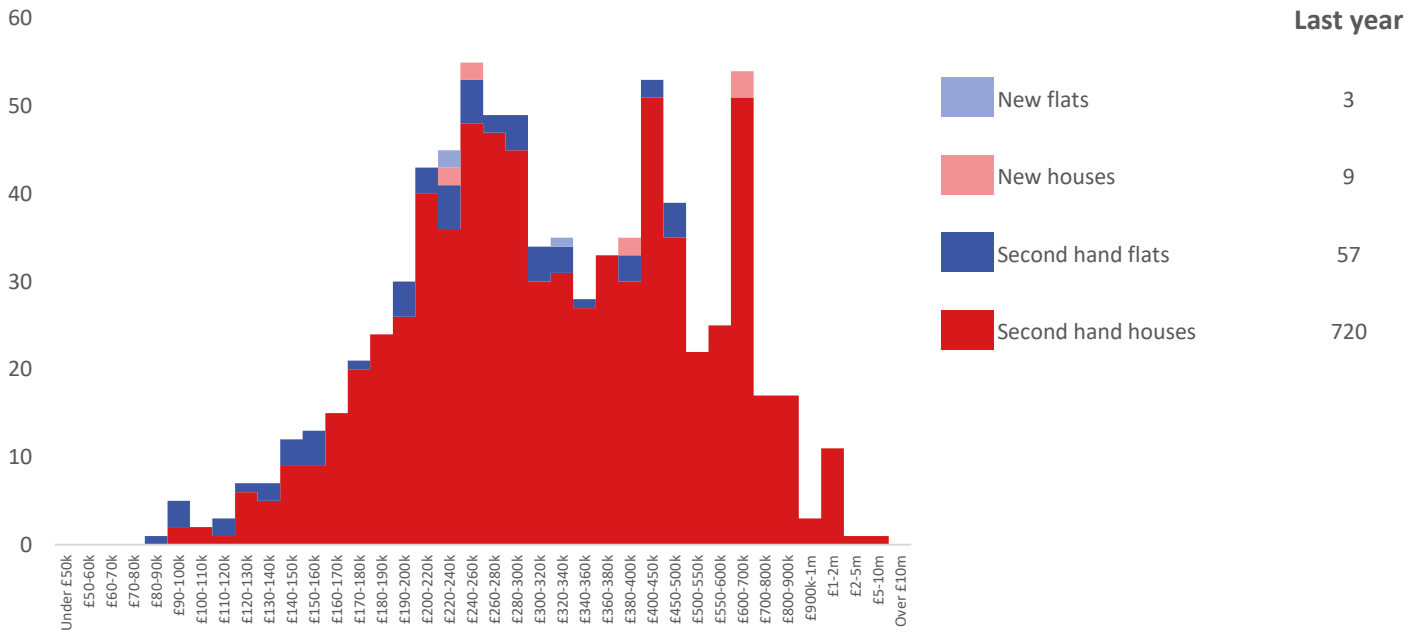
Cash and New Build Sales as % of Total, by Year



Note: The data on this page EXCLUDES transactions identified as transfers under a power of sale/repossessions, buy-to-lets (where they can be identified by a mortgage), and transfers to non-private individuals - i.e. it comprises only Land Registry 'A' data.

Depth of Market by Property Type

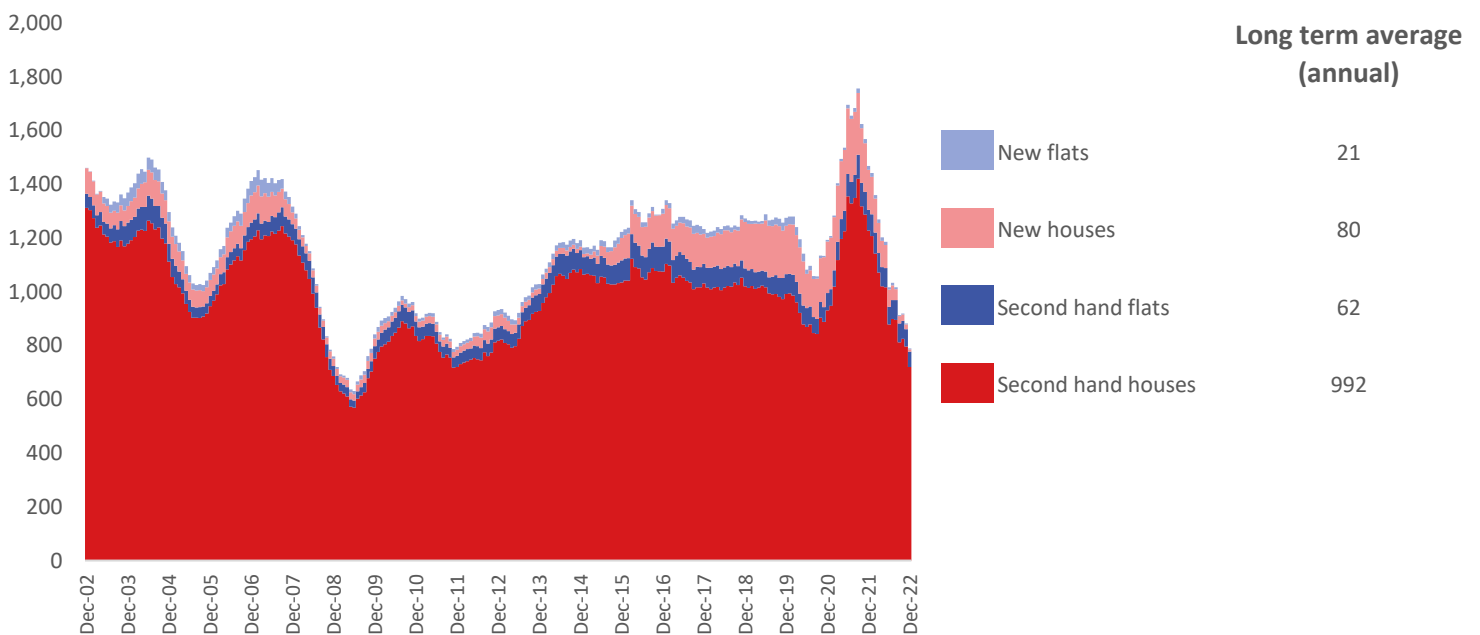
12 months to December 2022



The most common property type transacted over the past 12 months in Derbyshire Dales was 'second hand houses' with 720 sales, 91% of all sales over the same period. The annual total of 789 transactions is equivalent to 68% of the long term average level of activity.

Timeline of Transactions by Type

Rolling 12 months, past 20 years



The most common property type transacted over the past 20 years was 'second hand houses' with the equivalent of 992 sales per year on average, making up 86% of the typical annual total over that period.