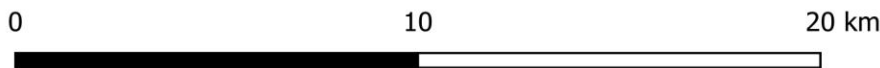


August 2023

Powered By
BuiltPlace

Detailed Price Paid Report: North West Leicestershire



| Contents | |
|----------|-------------------------------|
| 2 | House price growth |
| 3 | Sales map |
| 4 | Average prices + distribution |
| 5 | Transaction timeline |
| 6 | Depth of market |



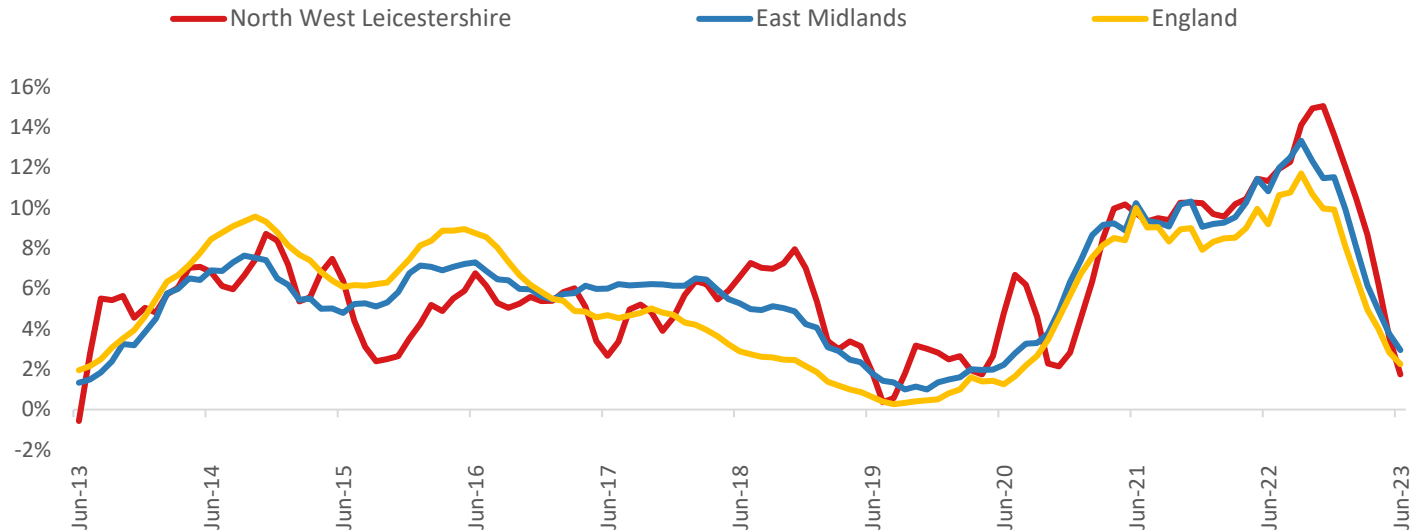
Click the main map above to visit our Cities, Towns & Villages page, for local analysis of the locations shown and over 2000 more

Headline Data

| | Current level | 3 month | Annual | 5 year | 10 year |
|--------------|---------------|---------|--------|--------|---------|
| House prices | £265,853 | -2.2% | 1.7% | 32.7% | 76.1% |
| Transactions | 1,424 | -15.4% | -24.6% | -36.2% | 13.0% |

House Price Growth (June 2023 data)

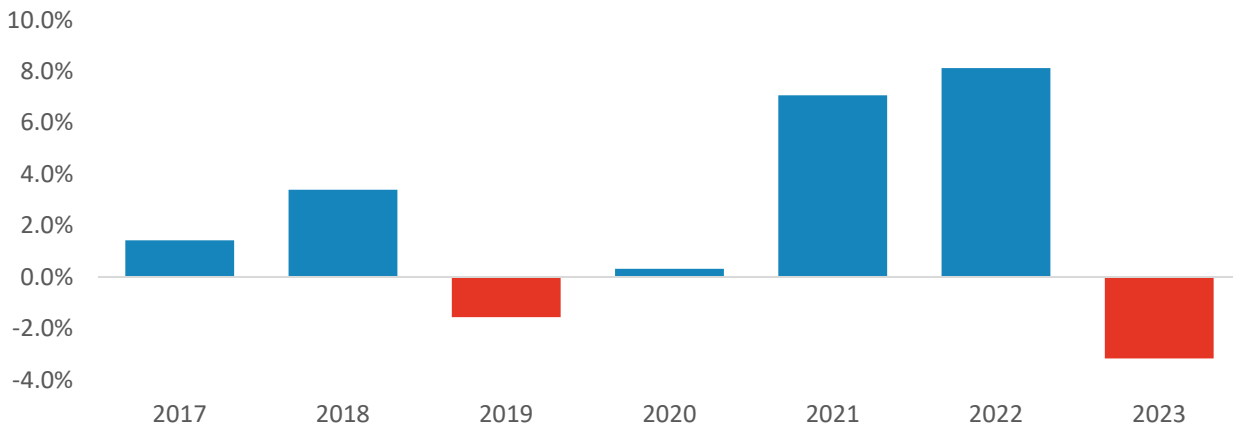
Annual Change in House Prices



House prices in North West Leicestershire grew by 1.7% in the 12 months to June 2023 (based on 3-month smoothed data). By comparison national house prices grew by 2.2% and prices in the East Midlands grew by 3.0% over the same period.

North West Leicestershire house prices are now 55.8% above their previous peak in 2007, compared to +55.9% for the East Midlands and +56.8% across England.

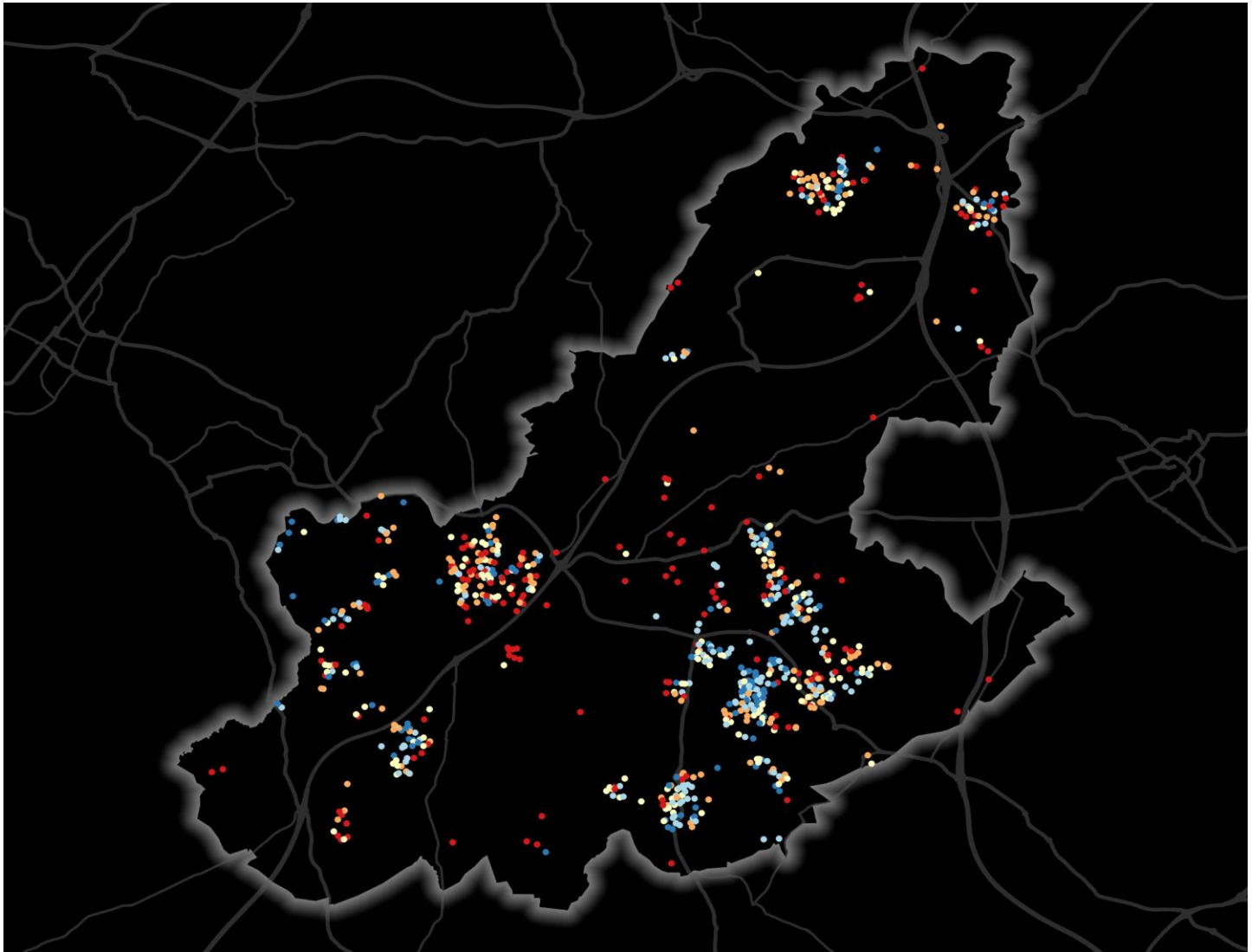
Year-To-Date Change in House Prices, December to June



Local prices have fallen by 3.2% in 2023 so far, compared to growth of 8.1% over the same period last year.

House Price Map

12 months to June 2023



Each point is one postcode, coloured by the average value relative to all sales in this local authority (price bands are LA-specific quintiles).

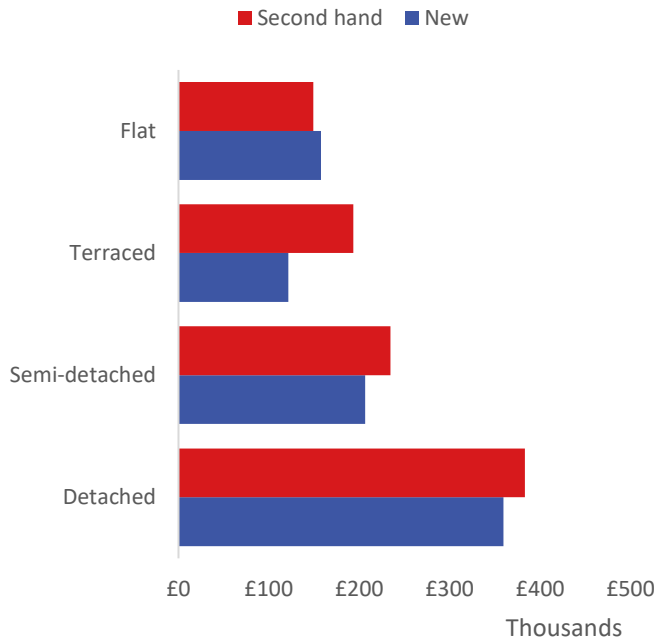
Map Key



| | Min | Max | |
|--|----------|----------|----------------------------|
| | Up to | £176,000 | 1st quintile / lowest 20% |
| | £176,000 | £229,000 | 2nd quintile |
| | £229,000 | £277,000 | 3rd quintile |
| | £277,000 | £358,000 | 4th quintile |
| | £358,000 | and over | 5th quintile / highest 20% |

Average House Price by Property Type

12 months to June 2023



| | New | Second hand |
|---------------|----------|-------------|
| Flat | £157,500 | £149,084 |
| Terraced | £121,499 | £193,480 |
| Semi-detached | £206,525 | £234,537 |
| Detached | £359,622 | £383,251 |

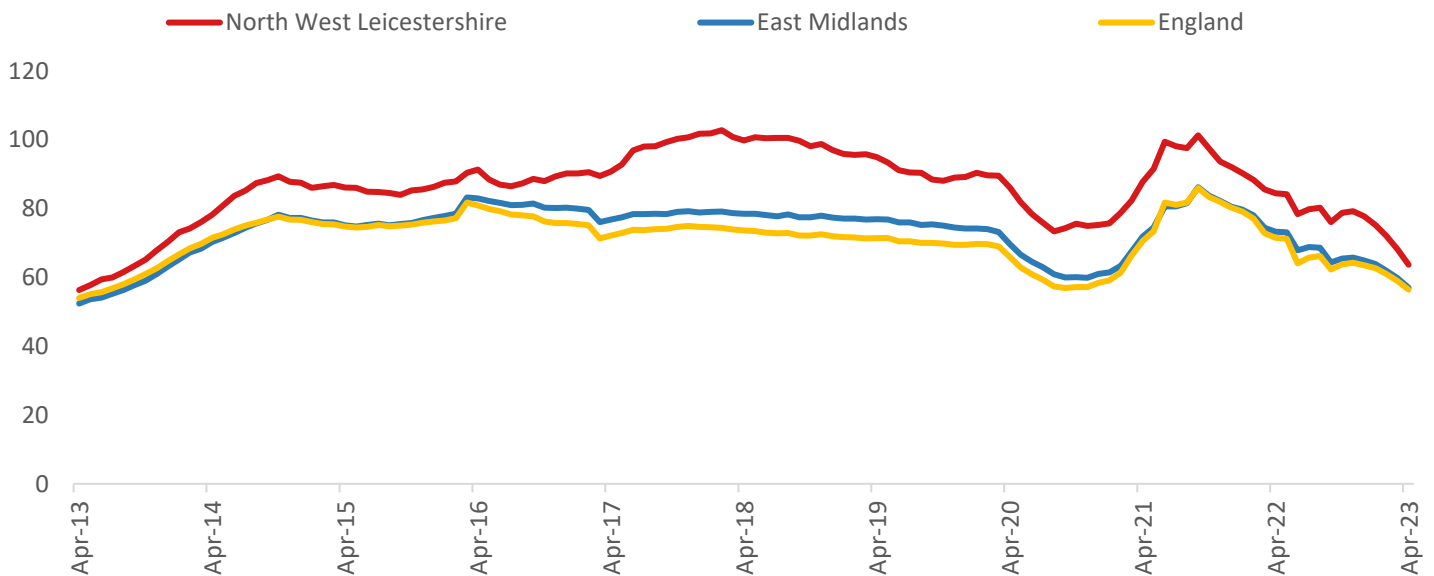
House Price Distribution by Year

All properties, by price band and calendar year (2023 = year to date)

| | 1997 | 2002 | 2007 | 2012 | 2017 | 2022 | 2023 |
|-------------|------|------|------|------|------|------|------|
| Under £100k | 89% | 56% | 11% | 17% | 6% | 1% | 3% |
| £100-200k | 10% | 36% | 64% | 61% | 48% | 27% | 32% |
| £200-300k | 1% | 6% | 18% | 16% | 29% | 37% | 36% |
| £300-400k | 0% | 1% | 4% | 4% | 11% | 22% | 18% |
| £400-500k | 0% | 0% | 2% | 2% | 4% | 7% | 4% |
| £500k-1m | 0% | 0% | 1% | 1% | 2% | 6% | 5% |
| £1-2m | 0% | 0% | 0% | 0% | 0% | 0% | 1% |
| Over £2m | 0% | 0% | 0% | 0% | 0% | 0% | 0% |

Transactions (April 2023 data)

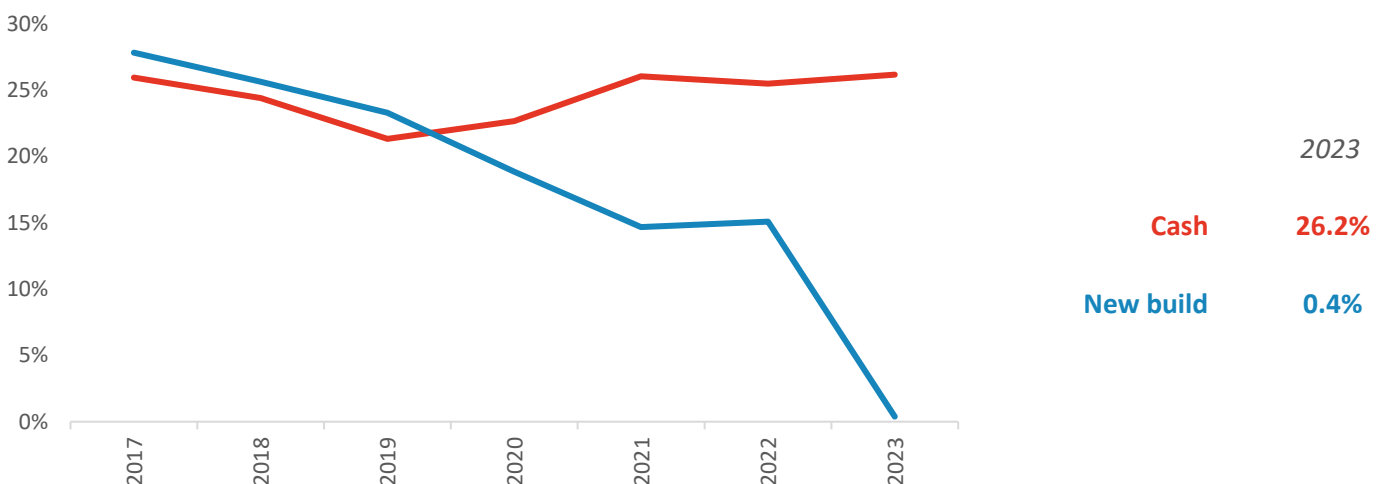
Annual Transactions, Indexed (2001-05 average = 100)



There were 1,424 transactions in North West Leicestershire during the 12 months to April 2023. This is 64% of the average from 2001-05 and suggests activity is significantly below pre-downturn levels.

Transactions in North West Leicestershire have fallen by 27.3% since 2014, compared to changes of -26.2% for East Midlands and -26.4% for England.

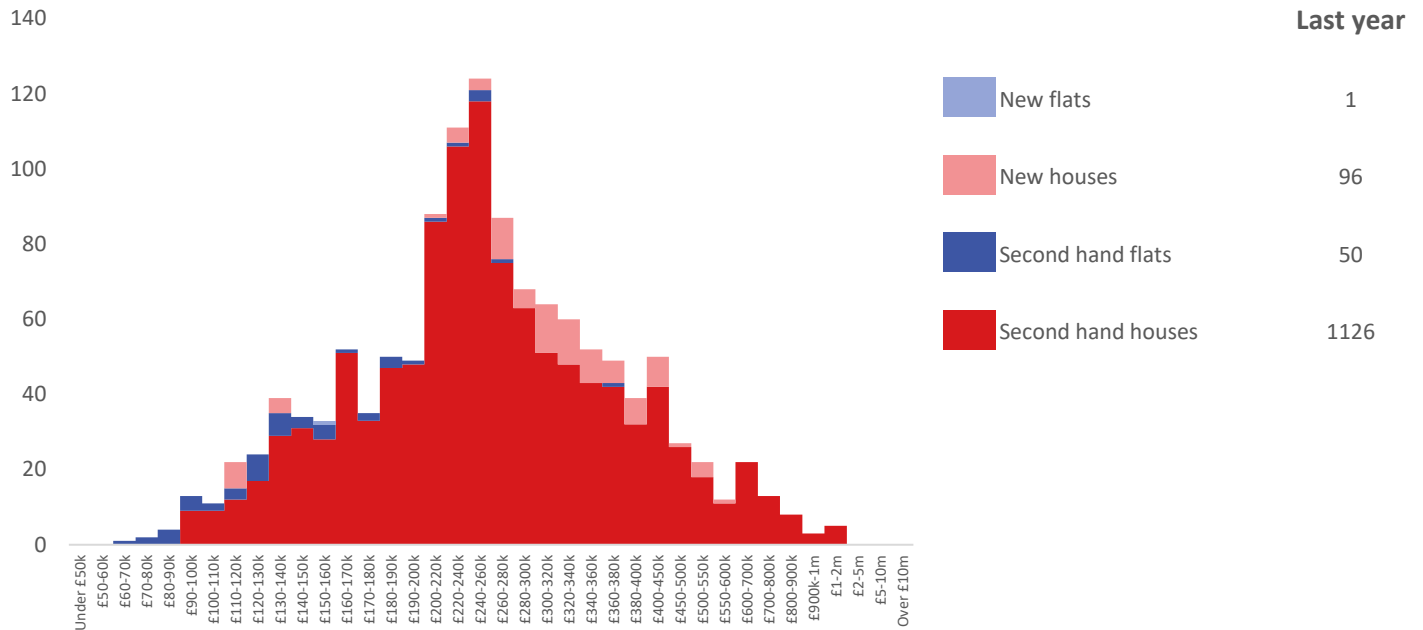
Cash and New Build Sales as % of Total, by Year



Note: The data on this page EXCLUDES transactions identified as transfers under a power of sale/repossessions, buy-to-lets (where they can be identified by a mortgage), and transfers to non-private individuals - i.e. it comprises only Land Registry 'A' data.

Depth of Market by Property Type

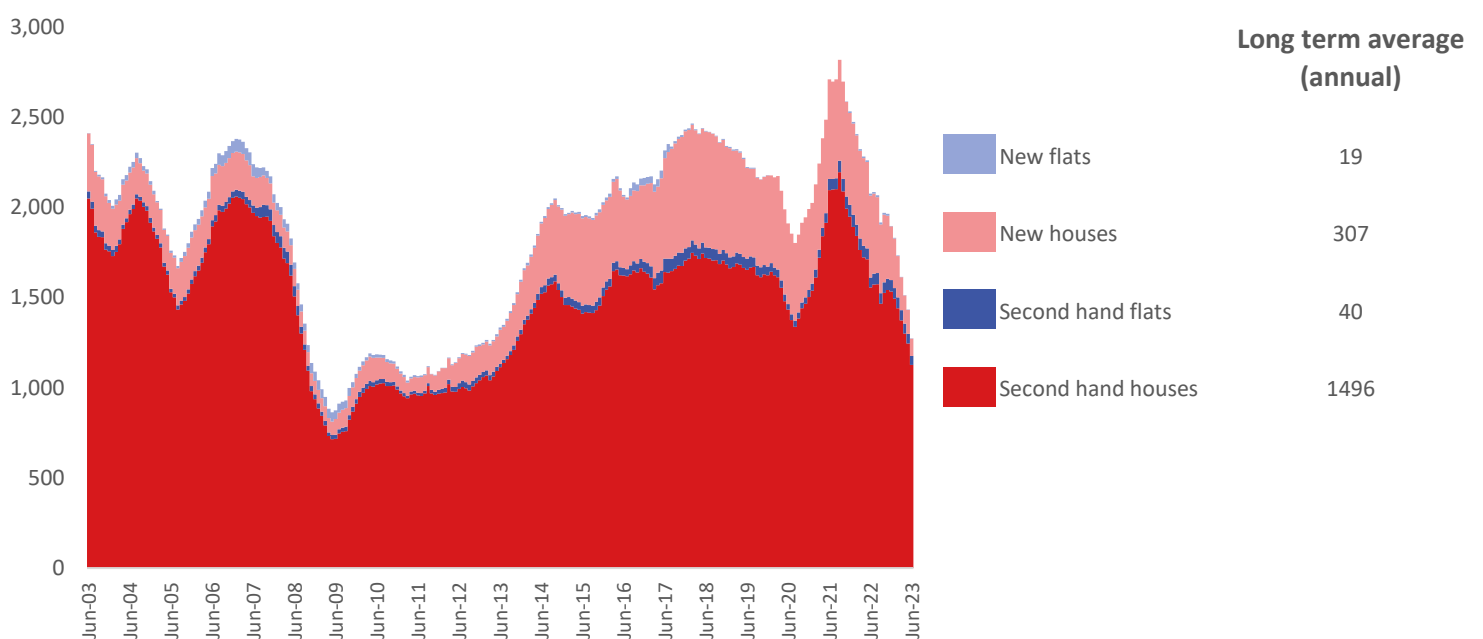
12 months to June 2023



The most common property type transacted over the past 12 months in North West Leicestershire was 'second hand houses' with 1,126 sales, 88% of all sales over the same period. The annual total of 1,273 transactions is equivalent to 68% of the long term average level of activity.

Timeline of Transactions by Type

Rolling 12 months, past 20 years



The most common property type transacted over the past 20 years was 'second hand houses' with the equivalent of 1,496 sales per year on average, making up 80% of the typical annual total over that period.