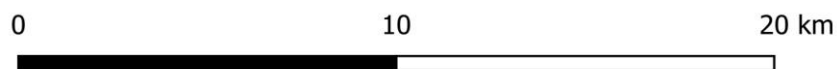
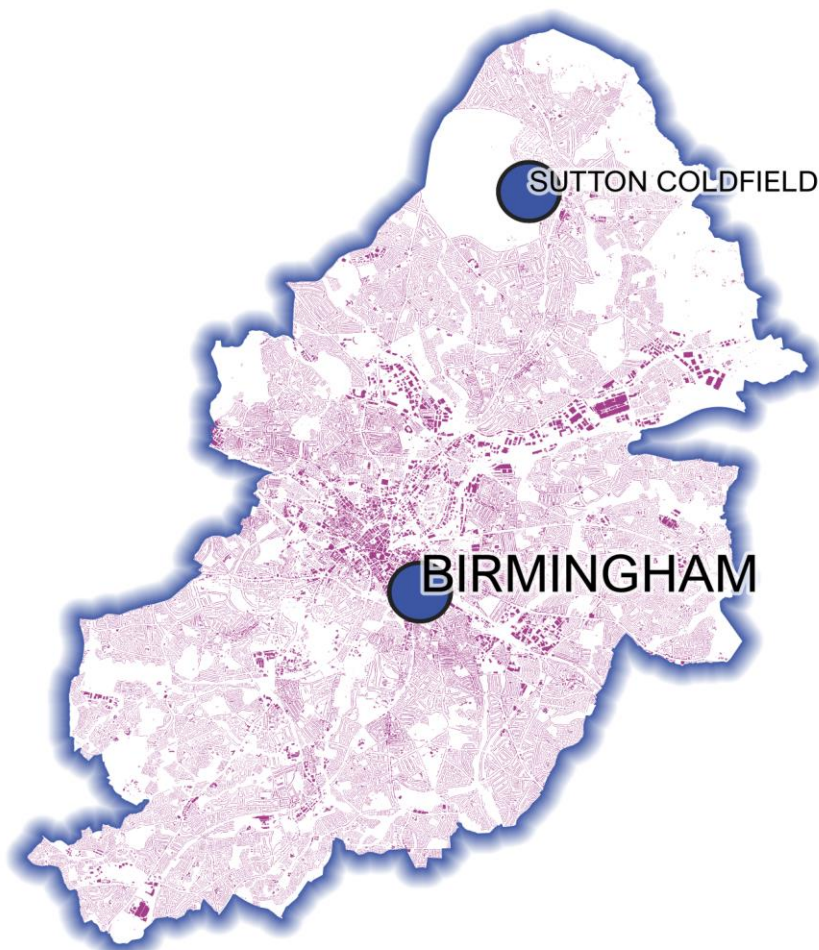


February 2024

Powered By  
BuiltPlace

# Detailed Price Paid Report:

# Birmingham



Contents	
2	House price growth
3	Sales map
4	Average prices + distribution
5	Transaction timeline
6	Depth of market



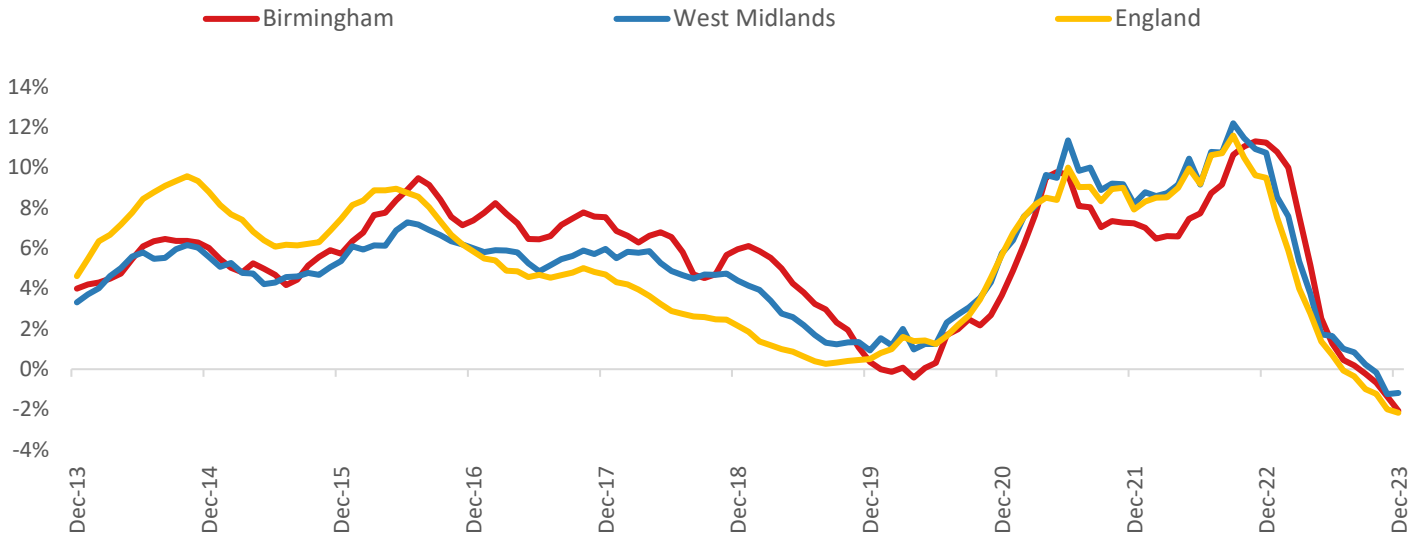
Click the main map above to visit our Cities, Towns & Villages page, for local analysis of the locations shown and over 2000 more

**Headline Data**

	Current level	3 month	Annual	5 year	10 year
House prices	£228,877	0.0%	-2.1%	21.5%	66.6%
Transactions	8,035	-12.2%	-26.0%	-40.1%	-17.2%

**House Price Growth (December 2023 data)**

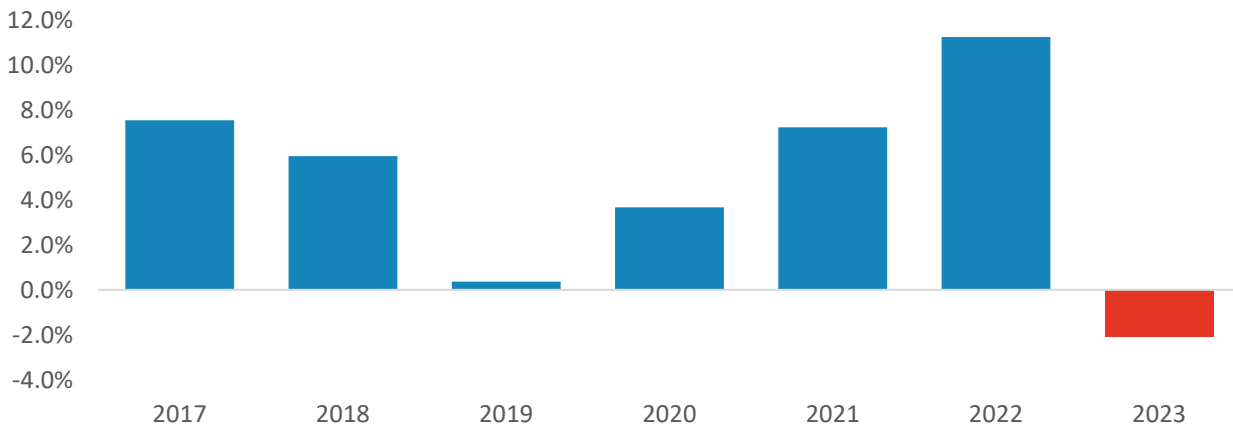
*Annual Change in House Prices*



House prices in Birmingham fell by 2.1% in the 12 months to December 2023 (based on 3-month smoothed data). By comparison national house prices fell by 2.2% and prices in the West Midlands fell by 1.2% over the same period.

Birmingham house prices are now 54.5% above their previous peak in 2007, compared to +51.4% for the West Midlands and +56.0% across England.

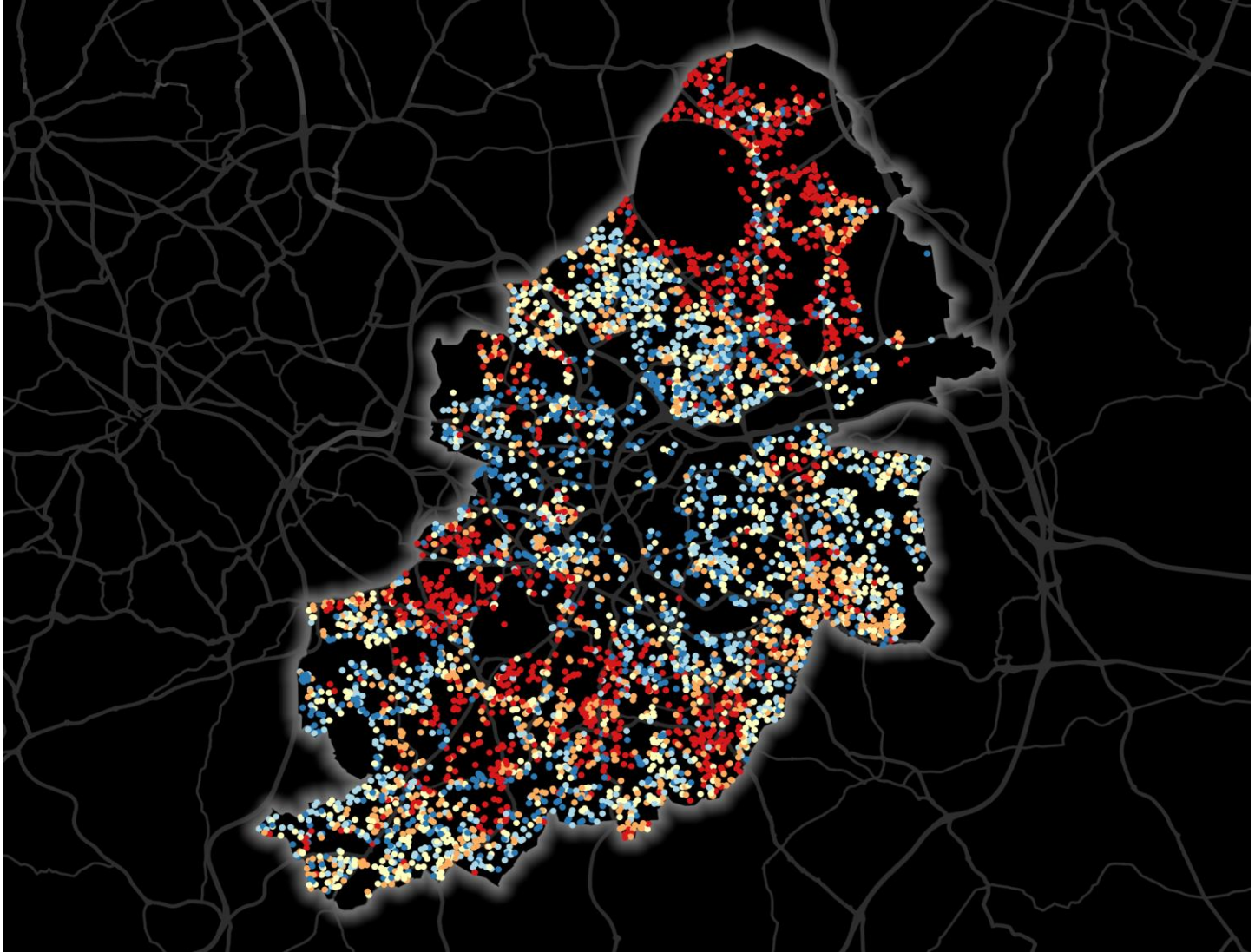
*Year-To-Date Change in House Prices, December to December*



Local prices have fallen by 2.1% in 2023 so far, compared to growth of 11.2% over the same period in 2022.

## House Price Map

12 months to December 2023



Each point is one postcode, coloured by the average value relative to all sales in this local authority (price bands are LA-specific quintiles).

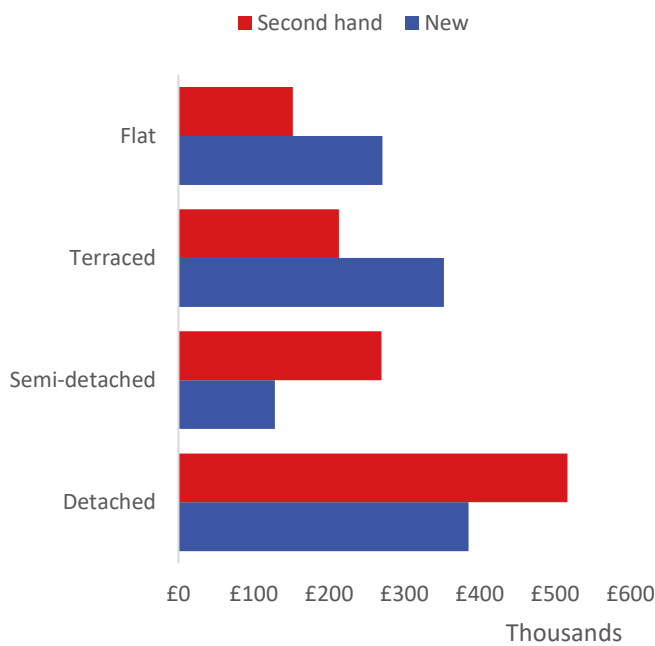
### Map Key



	Min	Max	
	Up to	£151,000	1st quintile / lowest 20%
£151,000		£191,000	2nd quintile
£191,000		£235,000	3rd quintile
£235,000		£314,000	4th quintile
£314,000		and over	5th quintile / highest 20%

### Average House Price by Property Type

12 months to December 2023



	New	Second hand
Flat	£270,909	£151,630
Terraced	£352,500	£213,038
Semi-detached	£127,800	£269,563
Detached	£385,000	£516,383

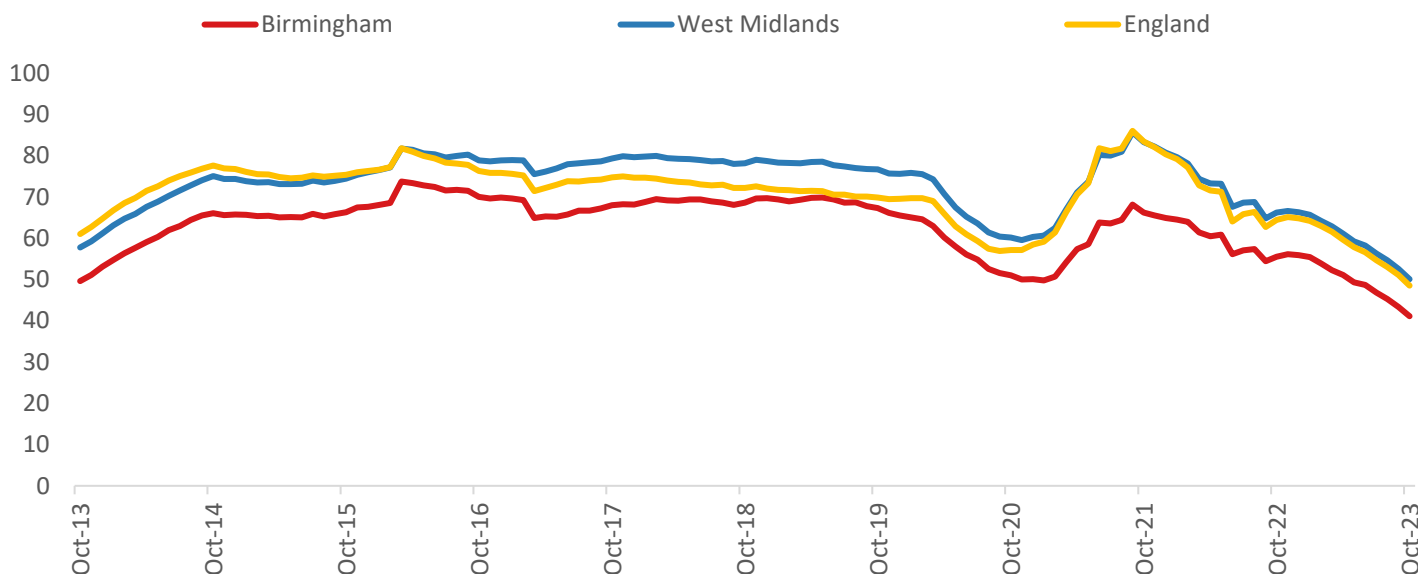
### House Price Distribution by Year

All properties, by price band and calendar year (2023 = year to date)

	1997	2002	2007	2012	2017	2022	2023
Under £100k	91%	65%	15%	27%	11%	6%	7%
£100-200k	8%	28%	66%	54%	57%	38%	38%
£200-300k	1%	5%	14%	13%	19%	33%	33%
£300-400k	0%	1%	3%	4%	7%	12%	12%
£400-500k	0%	1%	1%	1%	3%	5%	5%
£500k-1m	0%	0%	1%	1%	2%	5%	5%
£1-2m	0%	0%	0%	0%	0%	0%	0%
Over £2m	0%	0%	0%	0%	0%	0%	0%

### Transactions (October 2023 data)

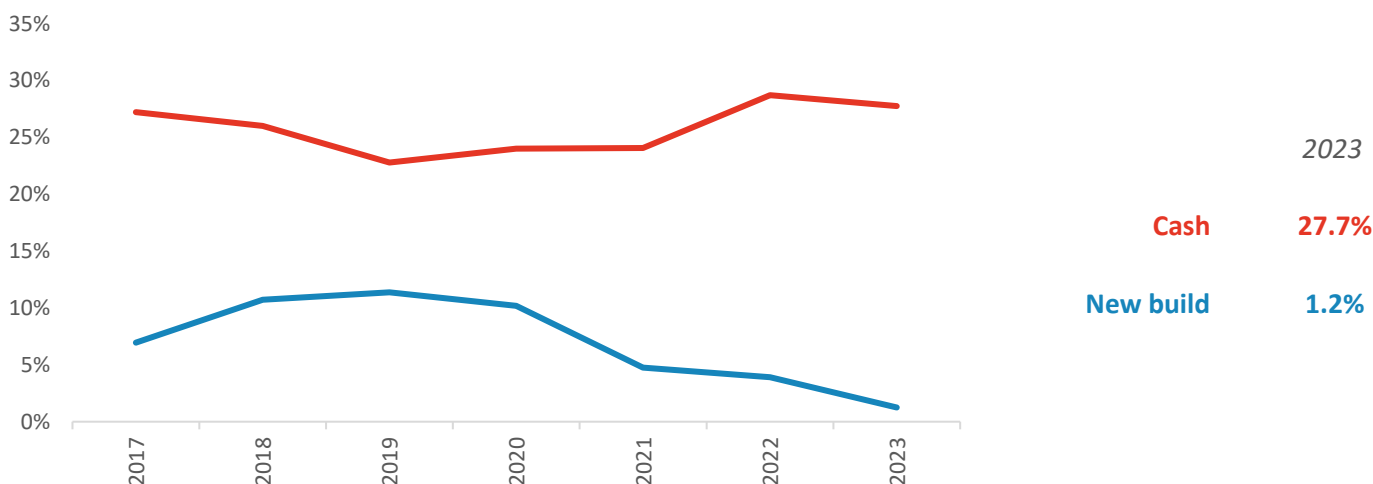
Annual Transactions, Indexed (2001-05 average = 100)



There were 8,035 transactions in Birmingham during the 12 months to October 2023. This is 41% of the average from 2001-05 and suggests activity is significantly below pre-downturn levels.

Transactions in Birmingham have fallen by 37.5% since 2014, compared to changes of -32.7% for West Midlands and -36.8% for England.

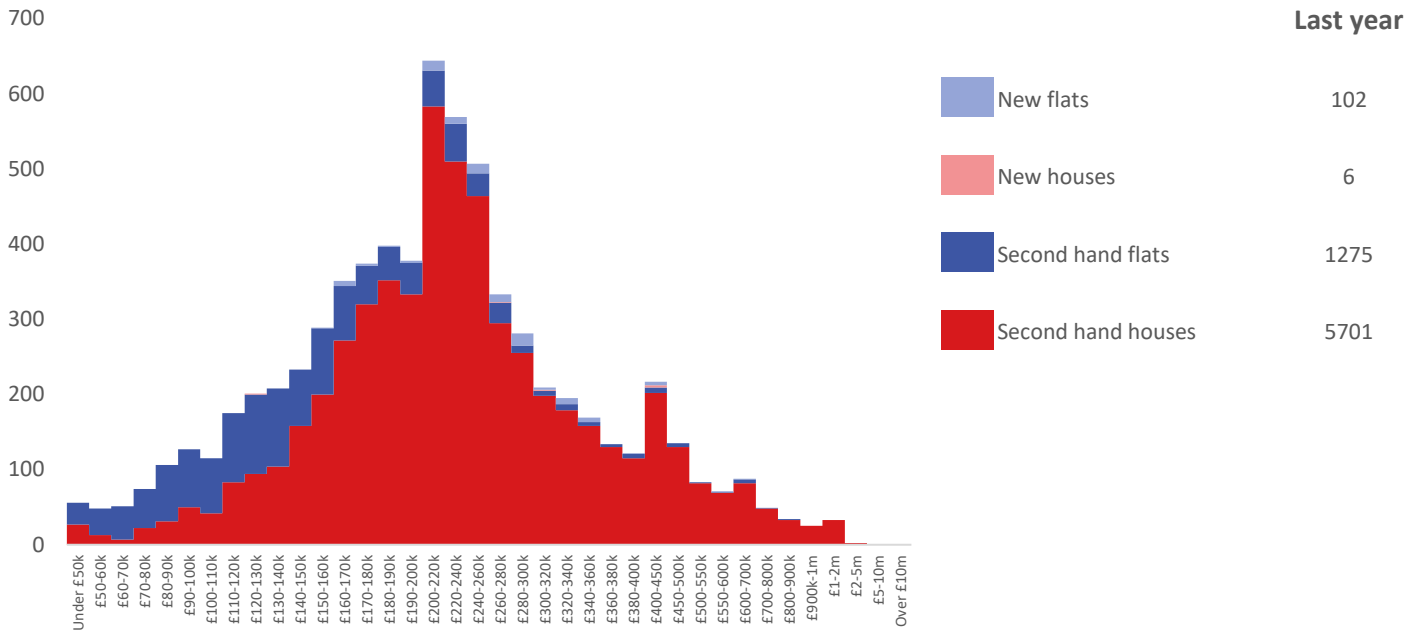
### Cash and New Build Sales as % of Total, by Year



Note: The data on this page EXCLUDES transactions identified as transfers under a power of sale/repossessions, buy-to-lets (where they can be identified by a mortgage), and transfers to non-private individuals - i.e. it comprises only Land Registry 'A' data.

### Depth of Market by Property Type

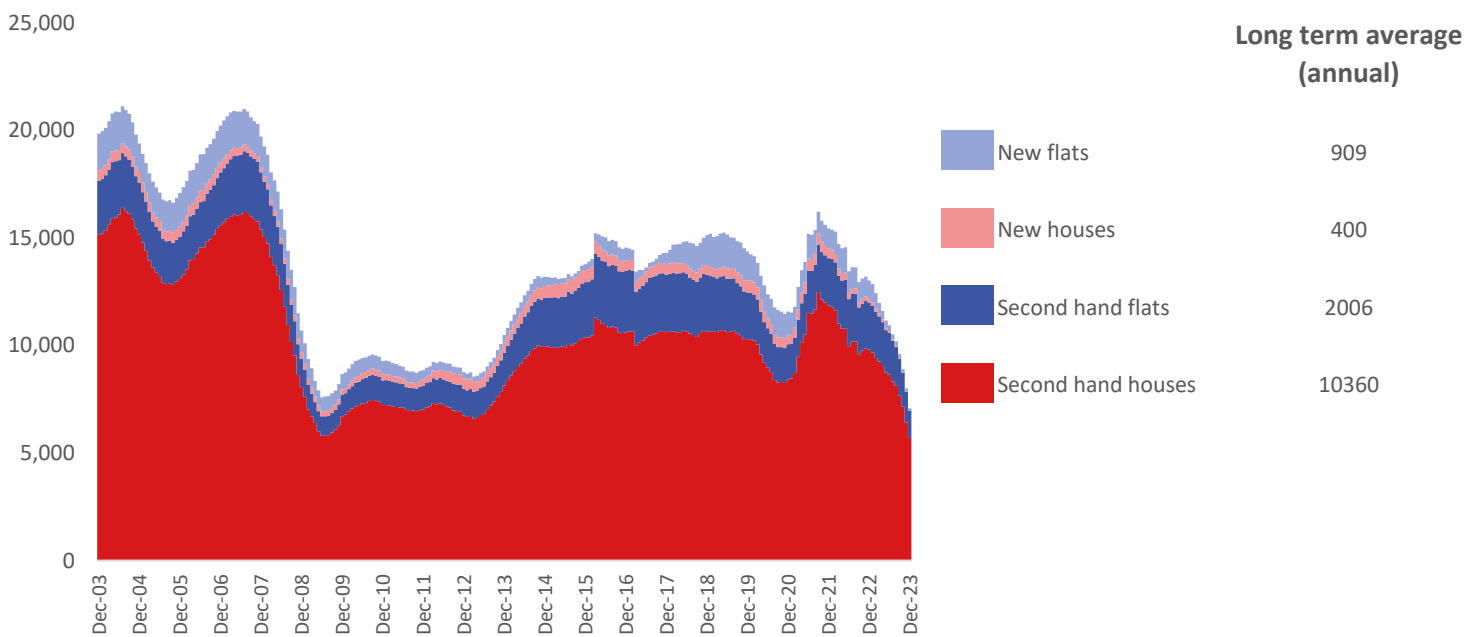
12 months to December 2023



The most common property type transacted over the past 12 months in Birmingham was 'second hand houses' with 5,701 sales, 80% of all sales over the same period. The annual total of 7,084 transactions is equivalent to 52% of the long term average level of activity.

### Timeline of Transactions by Type

Rolling 12 months, past 20 years



The most common property type transacted over the past 20 years was 'second hand houses' with the equivalent of 10,360 sales per year on average, making up 76% of the typical annual total over that period.