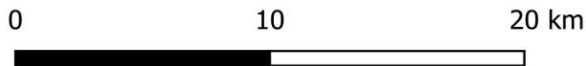
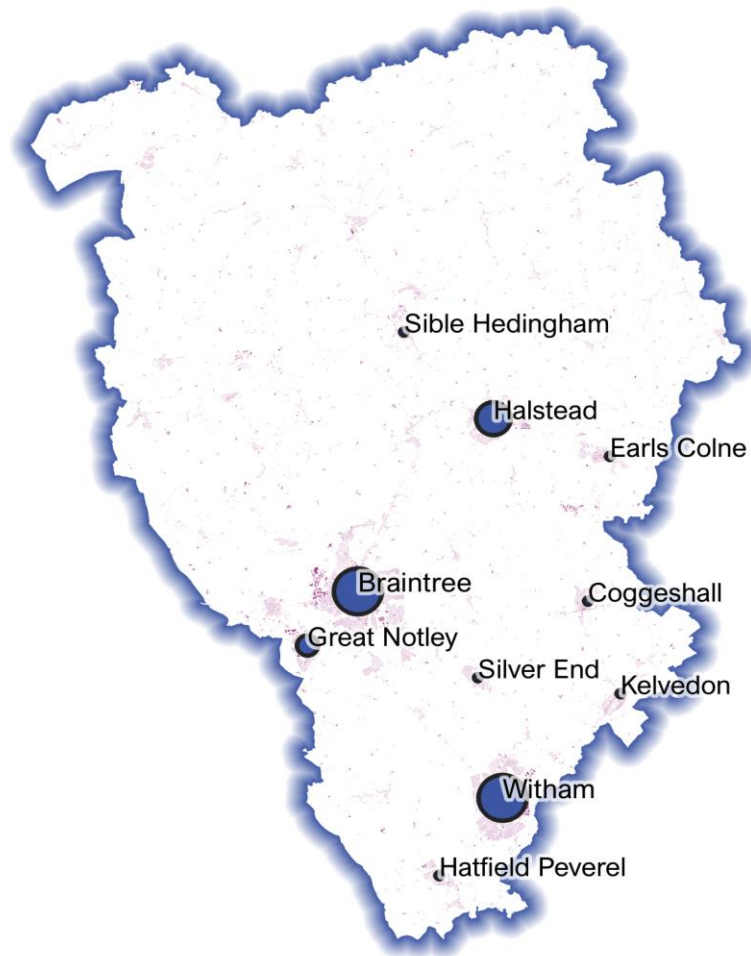


Detailed Price Paid Report:

Braintree



Contents	
2	House price growth
3	Sales map
4	Average prices + distribution
5	Transaction timeline
6	Depth of market

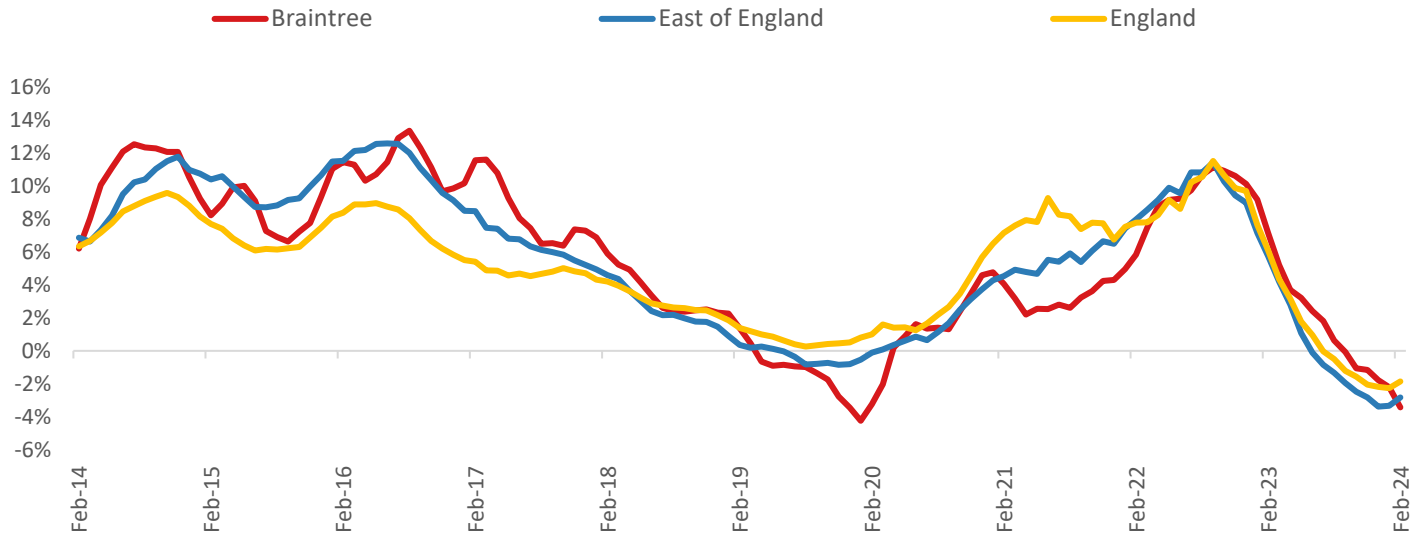


Headline Data

	Current level	3 month	Annual	5 year	10 year
House prices	£310,135	-3.2%	-3.4%	10.3%	59.2%
Transactions	1,581	-17.4%	-43.8%	-34.8%	-30.4%

House Price Growth (February 2024 data)

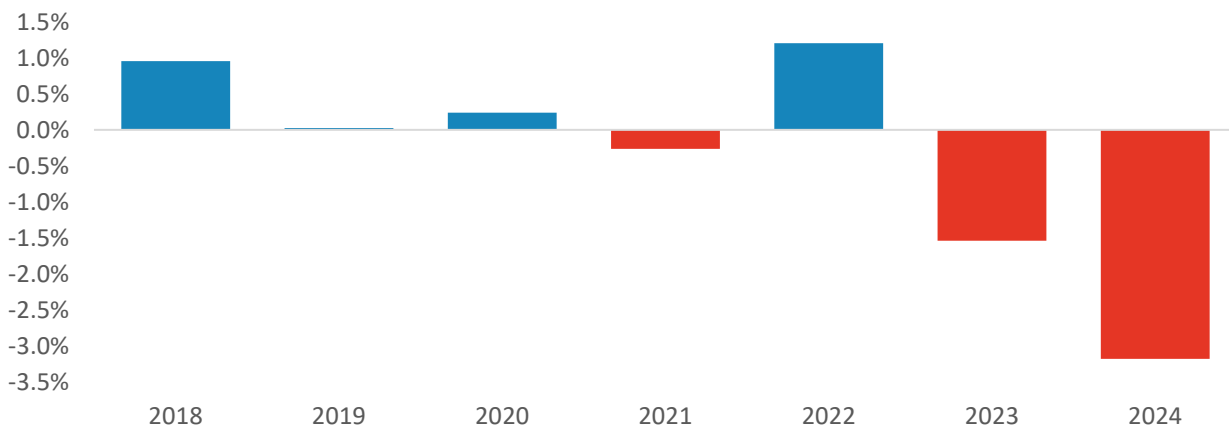
Annual Change in House Prices



House prices in Braintree fell by 3.4% in the 12 months to February 2024 (based on 3-month smoothed data). By comparison national house prices fell by 1.9% and prices in the East of England fell by 2.8% over the same period.

Braintree house prices are now 55.1% above their previous peak in 2007, compared to +60.7% for the East of England and +53.2% across England.

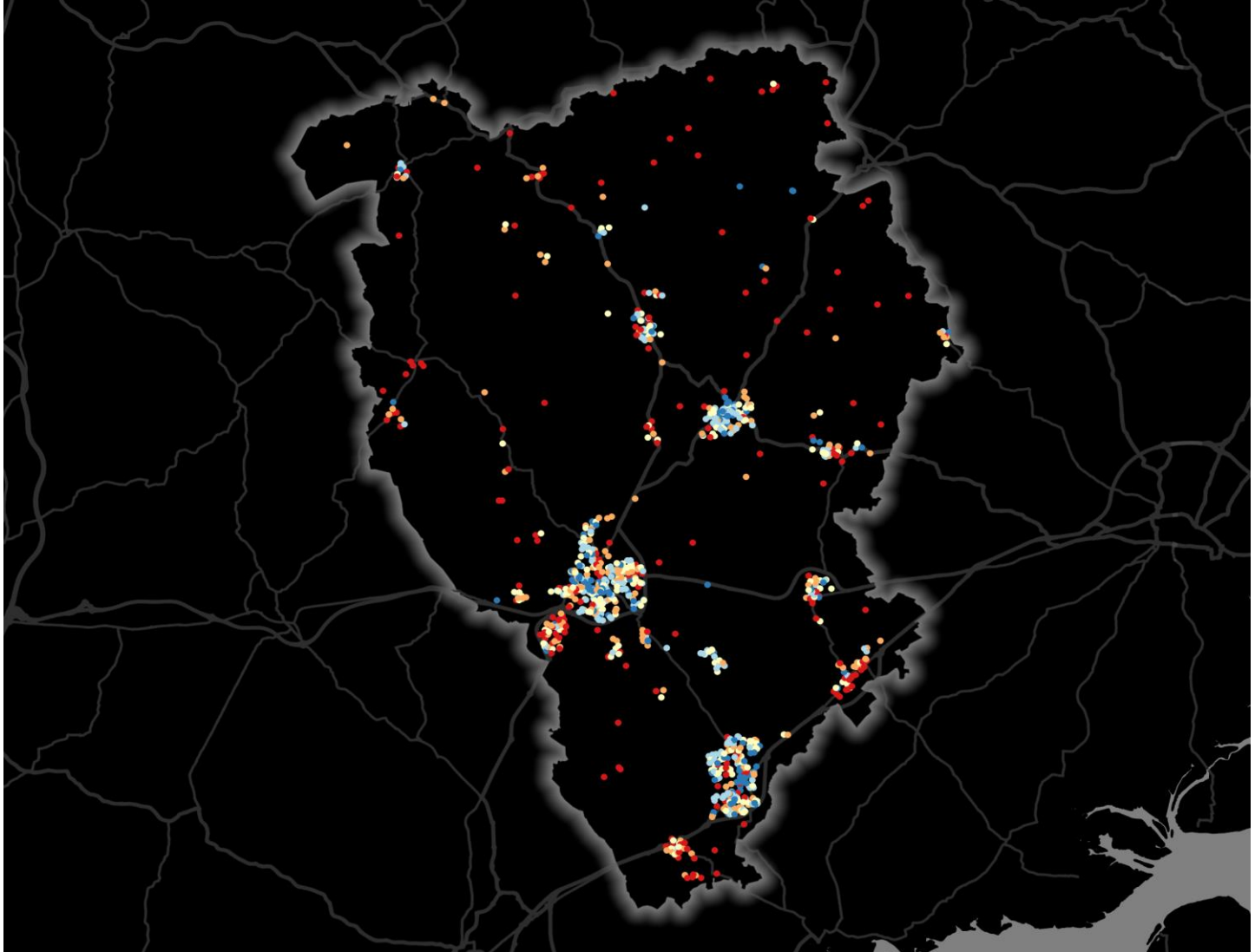
Year-To-Date Change in House Prices, December to February



Local prices have fallen by 3.2% in 2024 so far, compared to a fall of 1.5% over the same period in 2023.

House Price Map

12 months to February 2024



Each point is one postcode, coloured by the average value relative to all sales in this local authority (price bands are LA-specific quintiles).

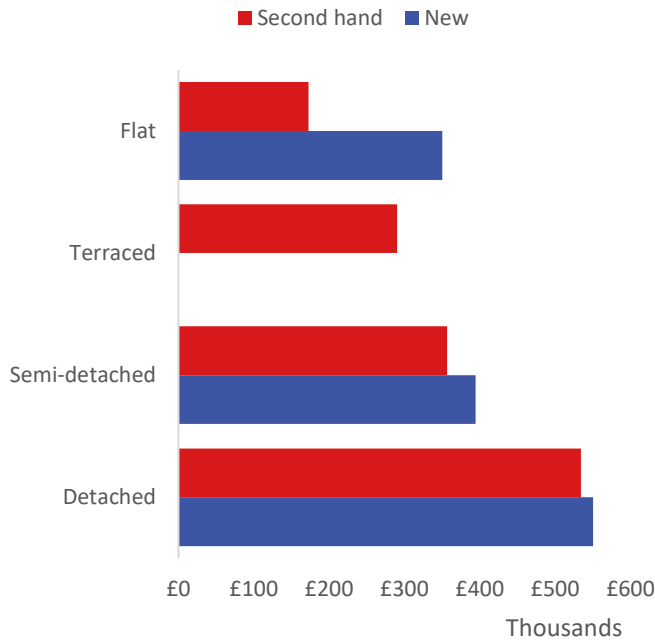
Map Key



	Min	Max	
	Up to	£232,000	1st quintile / lowest 20%
	£232,000	£295,000	2nd quintile
	£295,000	£353,000	3rd quintile
	£353,000	£457,000	4th quintile
	£457,000	and over	5th quintile / highest 20%

Average House Price by Property Type

12 months to February 2024



	New	Second hand
Flat	£350,000	£172,757
Terraced	No recorded sales	£290,457
Semi-detached	£394,165	£356,579
Detached	£550,461	£534,052

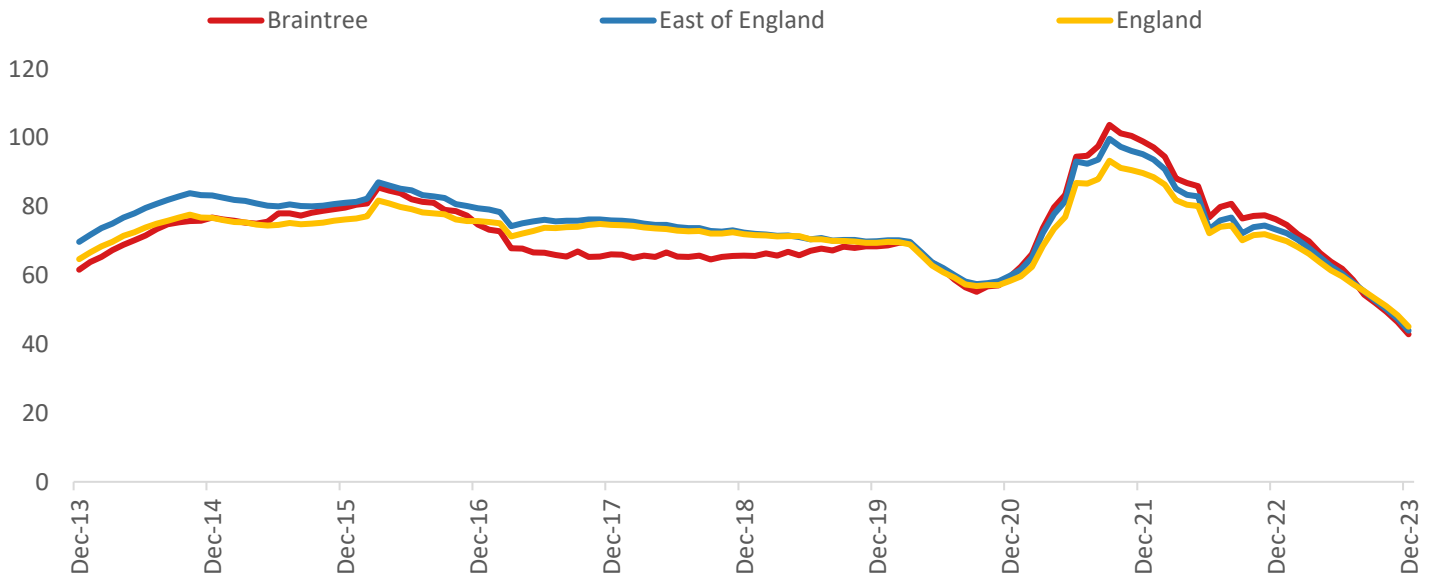
House Price Distribution by Year

All properties, by price band and calendar year

	1997	2002	2007	2012	2017	2022	2023
Under £100k	80%	30%	4%	5%	1%	1%	2%
£100-200k	18%	50%	53%	51%	19%	12%	12%
£200-300k	2%	14%	28%	29%	45%	24%	28%
£300-400k	0%	4%	9%	8%	18%	31%	29%
£400-500k	0%	1%	3%	5%	9%	15%	14%
£500k-1m	0%	1%	3%	2%	7%	16%	14%
£1-2m	0%	0%	0%	0%	0%	1%	1%
Over £2m	0%	0%	0%	0%	0%	0%	0%

Transactions (December 2023 data)

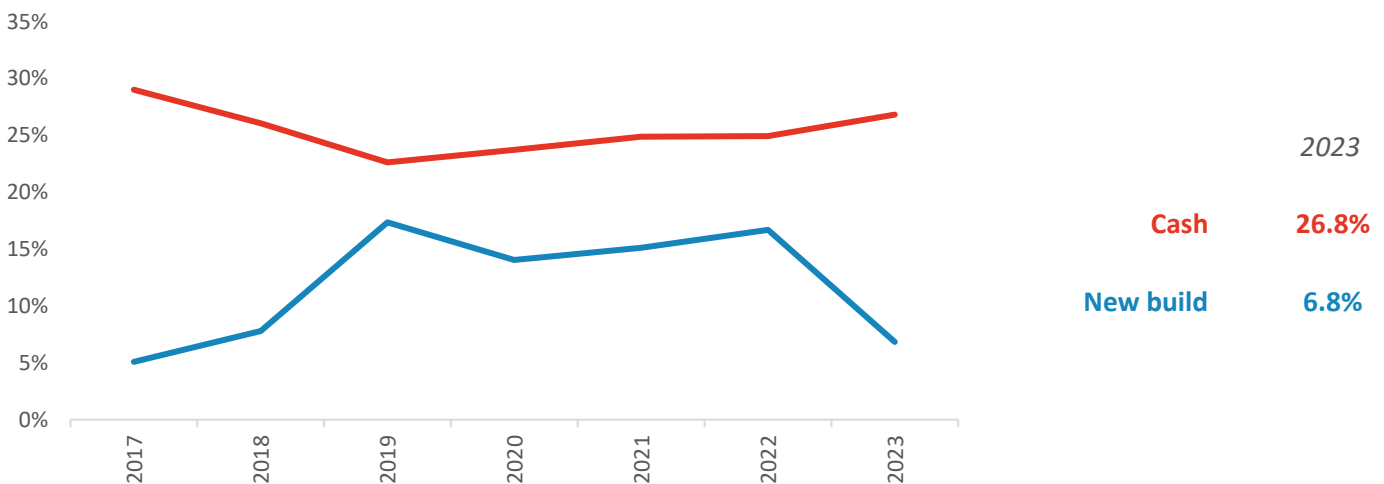
Annual Transactions, Indexed (2001-05 average = 100)



There were 1,581 transactions in Braintree during the 12 months to December 2023. This is 43% of the average from 2001-05 and suggests activity is significantly below pre-downturn levels.

Transactions in Braintree have fallen by 44.2% since 2014, compared to changes of -47.2% for East of England and -41.2% for England.

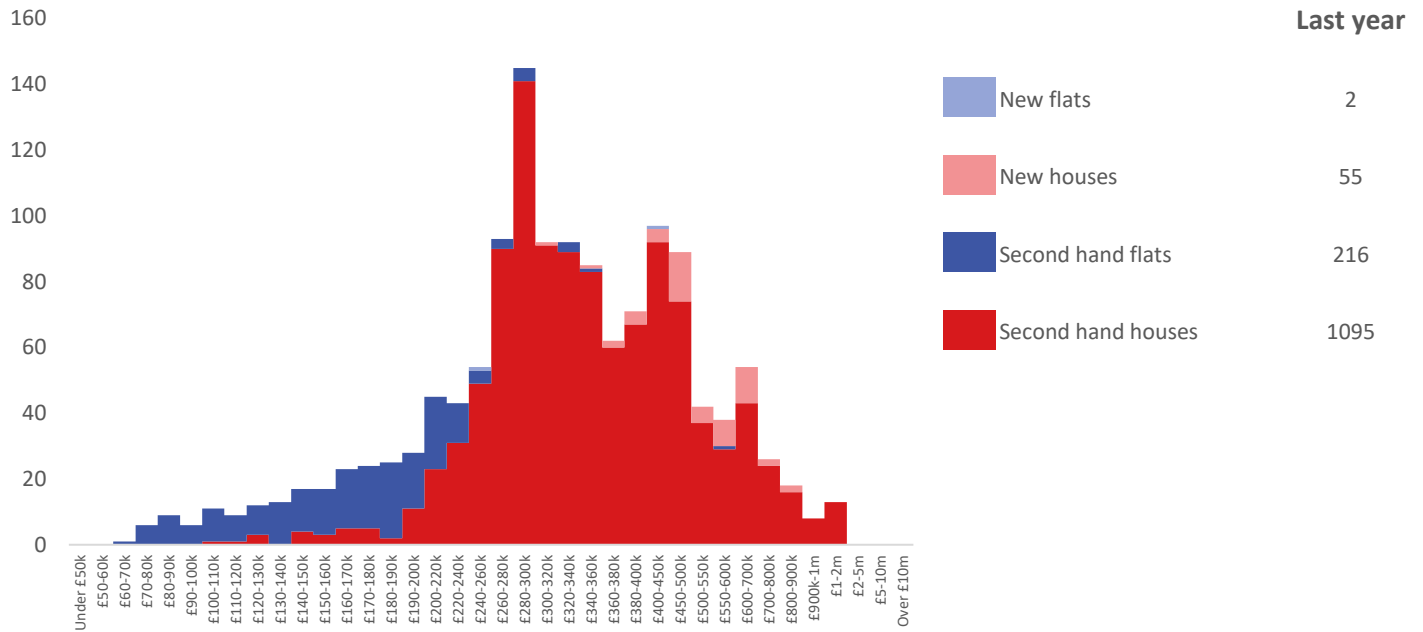
Cash and New Build Sales as % of Total, by Year



Note: The data on this page EXCLUDES transactions identified as transfers under a power of sale/repossessions, buy-to-lets (where they can be identified by a mortgage), and transfers to non-private individuals - i.e. it comprises only Land Registry 'A' data.

Depth of Market by Property Type

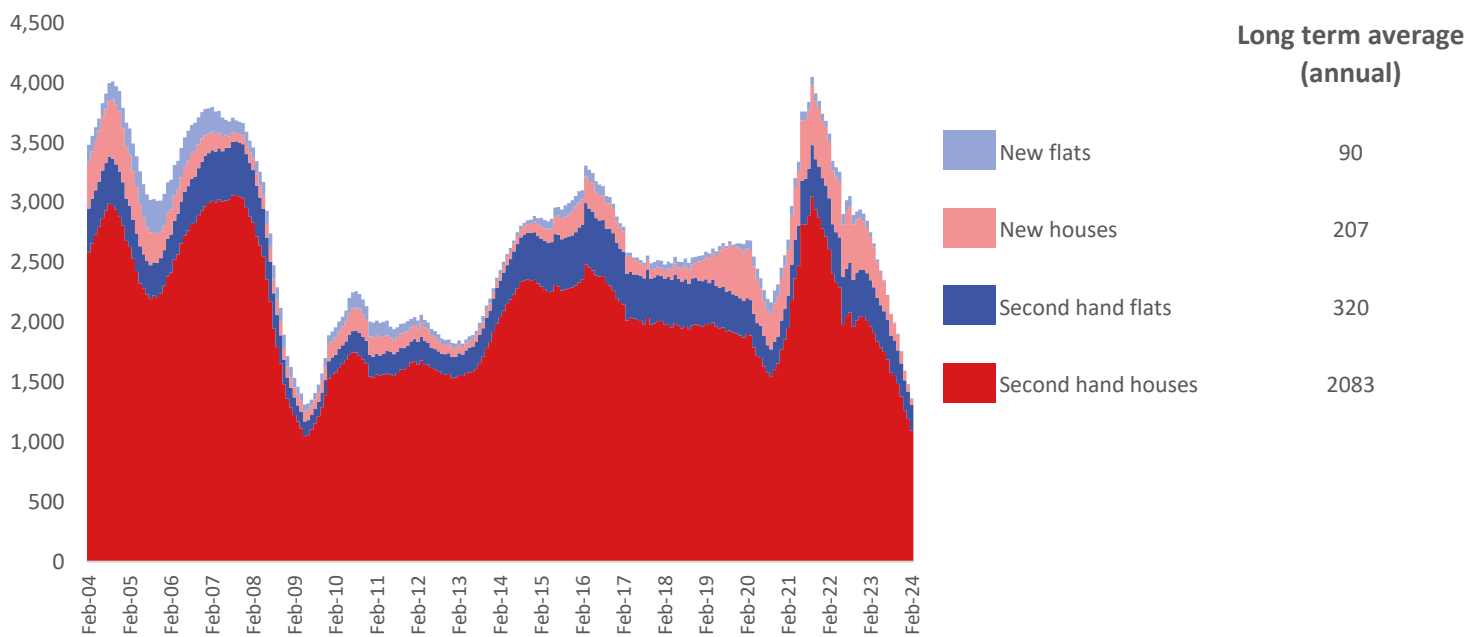
12 months to February 2024



The most common property type transacted over the past 12 months in Braintree was 'second hand houses' with 1,095 sales, 80% of all sales over the same period. The annual total of 1,368 transactions is equivalent to 51% of the long term average level of activity.

Timeline of Transactions by Type

Rolling 12 months, past 20 years



The most common property type transacted over the past 20 years was 'second hand houses' with the equivalent of 2,083 sales per year on average, making up 77% of the typical annual total over that period.