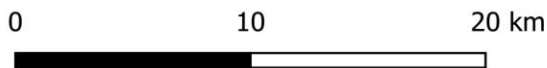
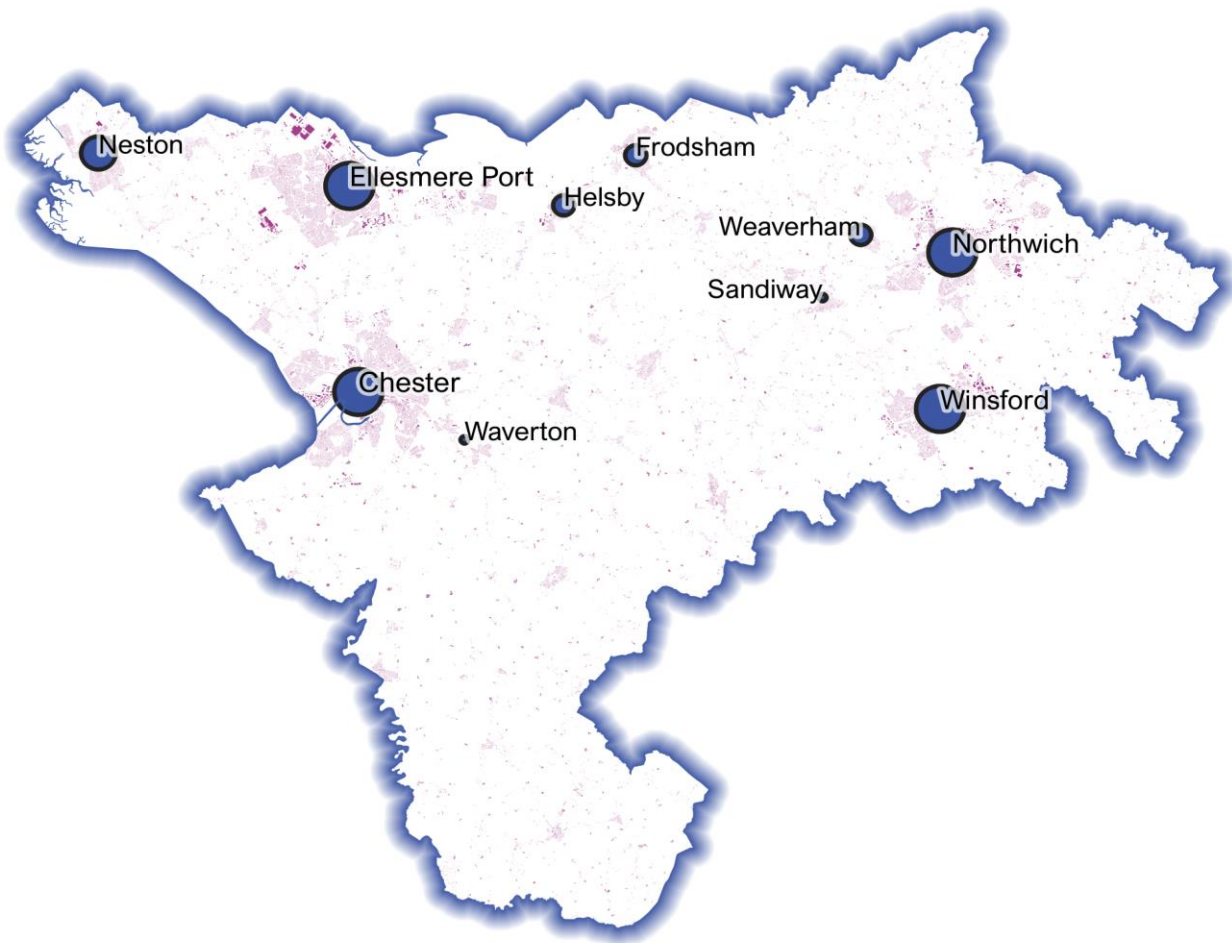


# Detailed Price Paid Report: Cheshire West and Chester



Contents	
2	House price growth
3	Sales map
4	Average prices + distribution
5	Transaction timeline
6	Depth of market

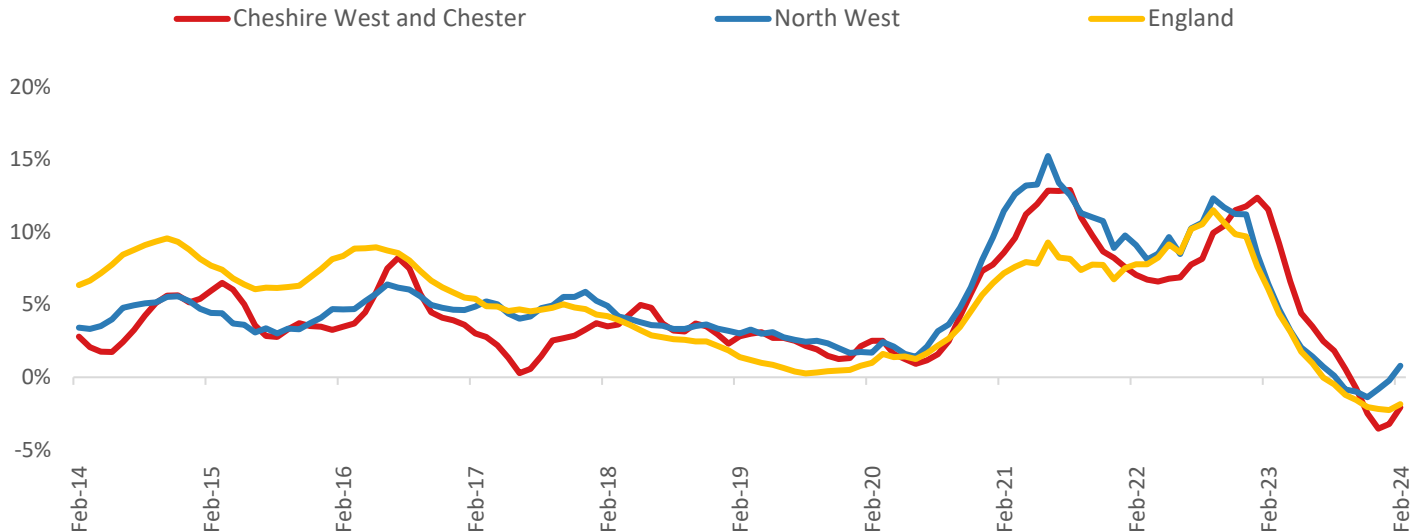


**Headline Data**

	Current level	3 month	Annual	5 year	10 year
House prices	£265,357	1.8%	-2.1%	30.2%	56.5%
Transactions	3,910	-13.6%	-33.1%	-36.9%	-13.9%

**House Price Growth (February 2024 data)**

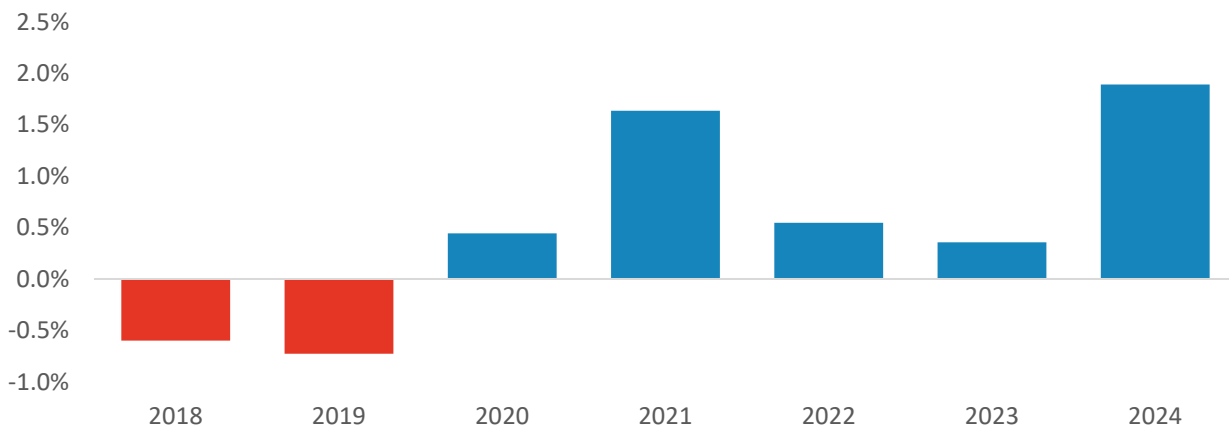
*Annual Change in House Prices*



House prices in Cheshire West and Chester fell by 2.1% in the 12 months to February 2024 (based on 3-month smoothed data). By comparison national house prices fell by 1.9% and prices in the North West grew by 0.8% over the same period.

Cheshire West and Chester house prices are now 42.6% above their previous peak in 2007, compared to +42.1% for the North West and +53.2% across England.

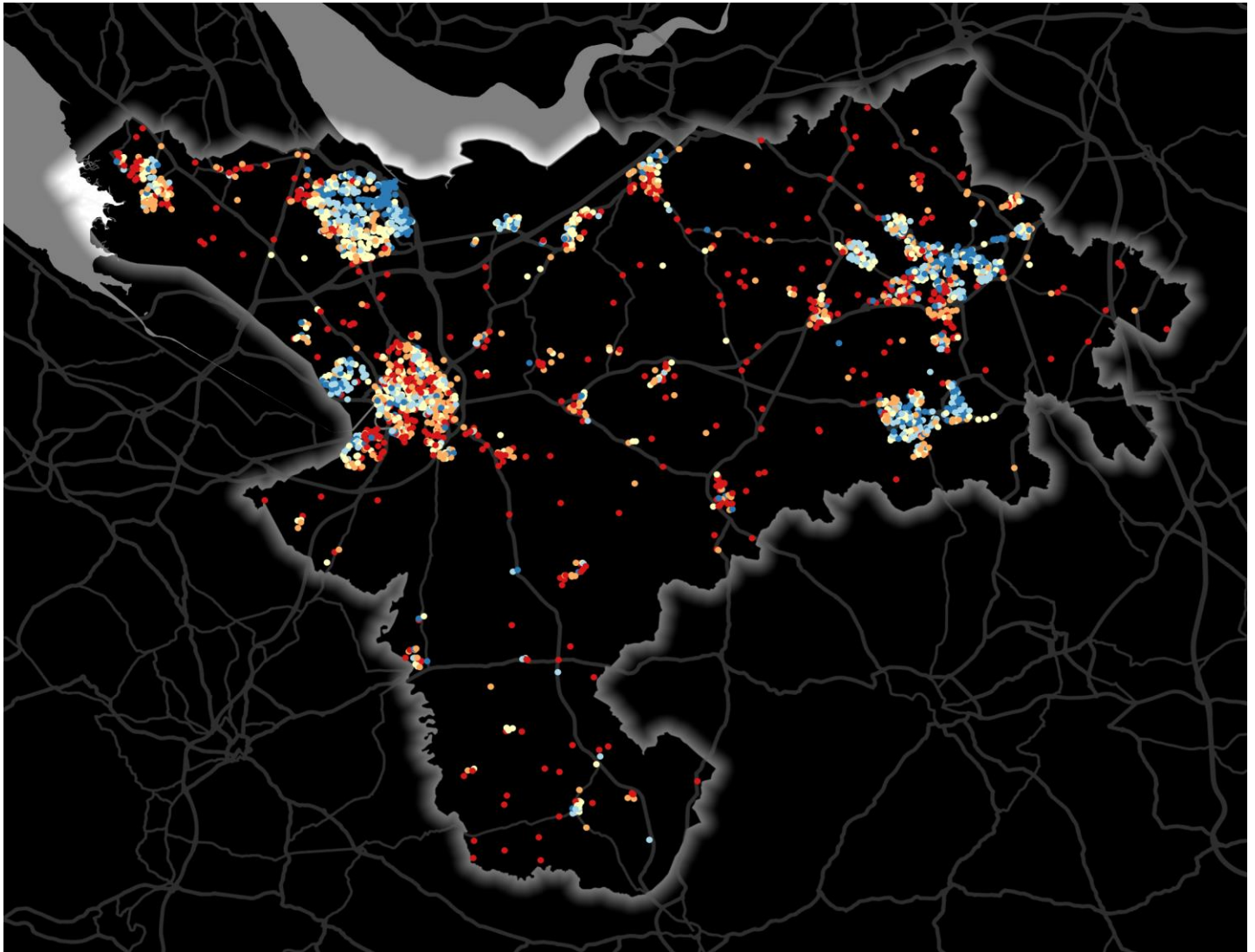
*Year-To-Date Change in House Prices, December to February*



Local prices have grown by 1.9% in 2024 so far, compared to growth of 0.4% over the same period in 2023.

## House Price Map

12 months to February 2024



Each point is one postcode, coloured by the average value relative to all sales in this local authority (price bands are LA-specific quintiles).

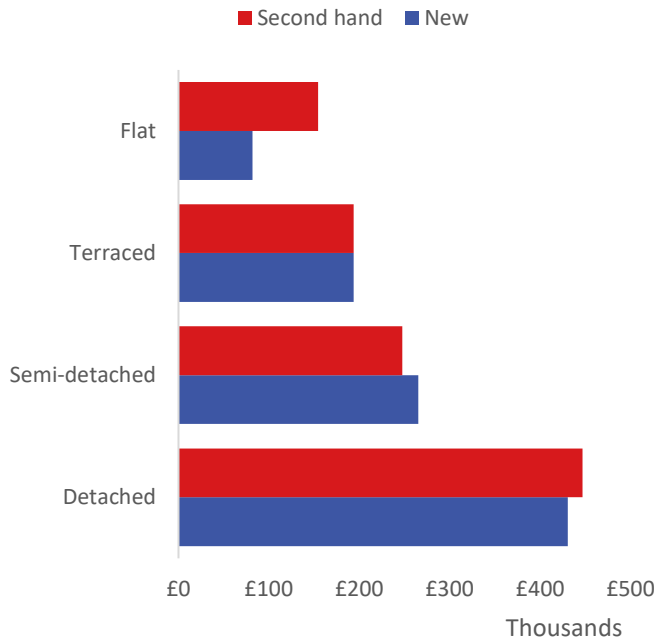
### Map Key



	Min	Max	
	Up to	£146,000	1st quintile / lowest 20%
	£146,000	£198,000	2nd quintile
	£198,000	£264,000	3rd quintile
	£264,000	£371,000	4th quintile
	£371,000	and over	5th quintile / highest 20%

### Average House Price by Property Type

12 months to February 2024



	New	Second hand
Flat	£82,000	£154,479
Terraced	£193,637	£193,808
Semi-detached	£265,390	£247,499
Detached	£430,693	£446,951

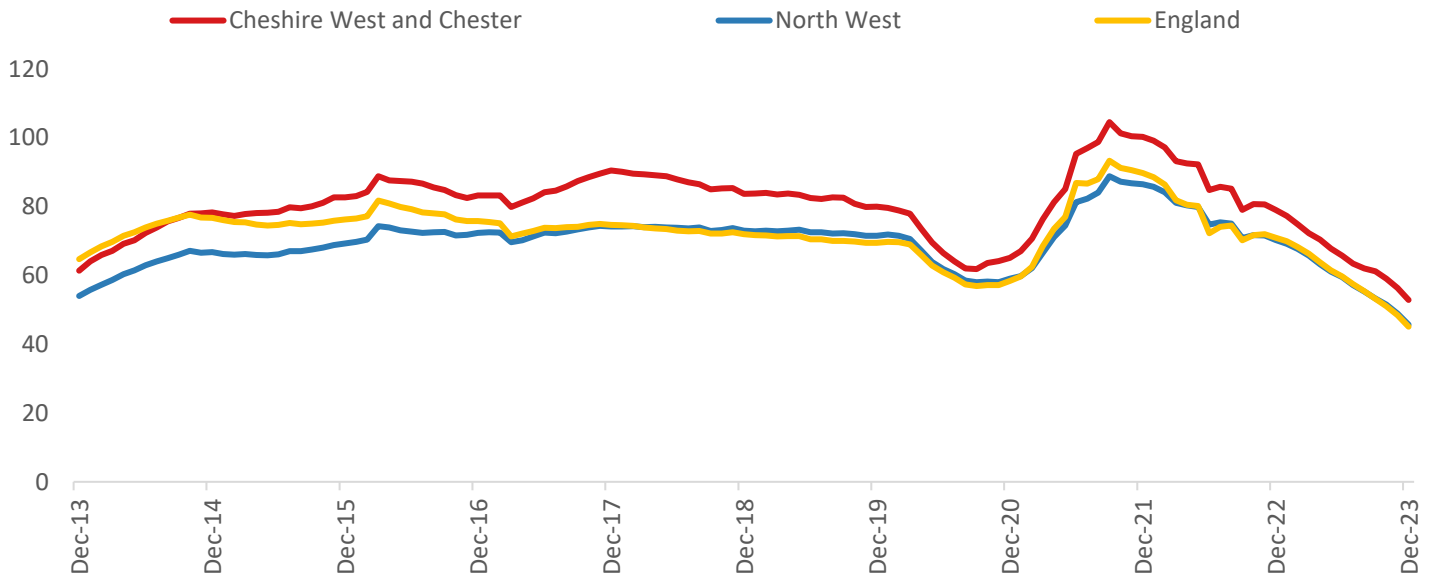
### House Price Distribution by Year

All properties, by price band and calendar year

	1997	2002	2007	2012	2017	2022	2023
Under £100k	81%	54%	10%	16%	10%	6%	6%
£100-200k	17%	35%	57%	51%	44%	33%	34%
£200-300k	2%	8%	20%	20%	26%	27%	29%
£300-400k	0%	3%	7%	7%	12%	16%	13%
£400-500k	0%	1%	3%	3%	5%	8%	8%
£500k-1m	0%	0%	2%	3%	4%	9%	8%
£1-2m	0%	0%	0%	0%	0%	1%	1%
Over £2m	0%	0%	0%	0%	0%	0%	0%

## Transactions (December 2023 data)

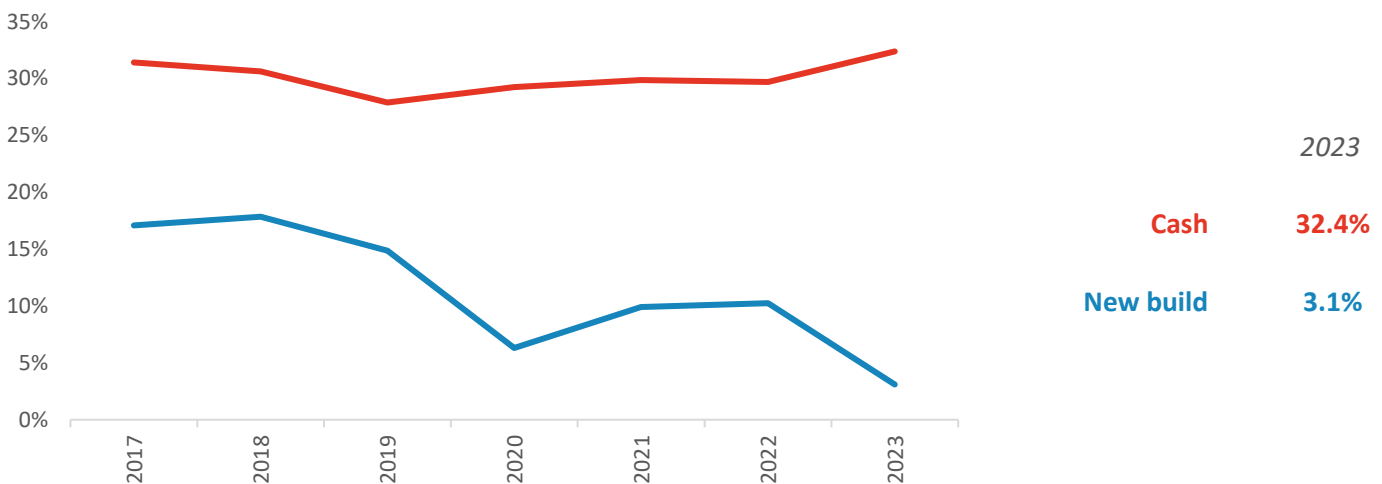
Annual Transactions, Indexed (2001-05 average = 100)



There were 3,910 transactions in Cheshire West and Chester during the 12 months to December 2023. This is 53% of the average from 2001-05 and suggests activity is significantly below pre-downturn levels.

Transactions in Cheshire West and Chester have fallen by 32.5% since 2014, compared to changes of -31.6% for North West and -41.2% for England.

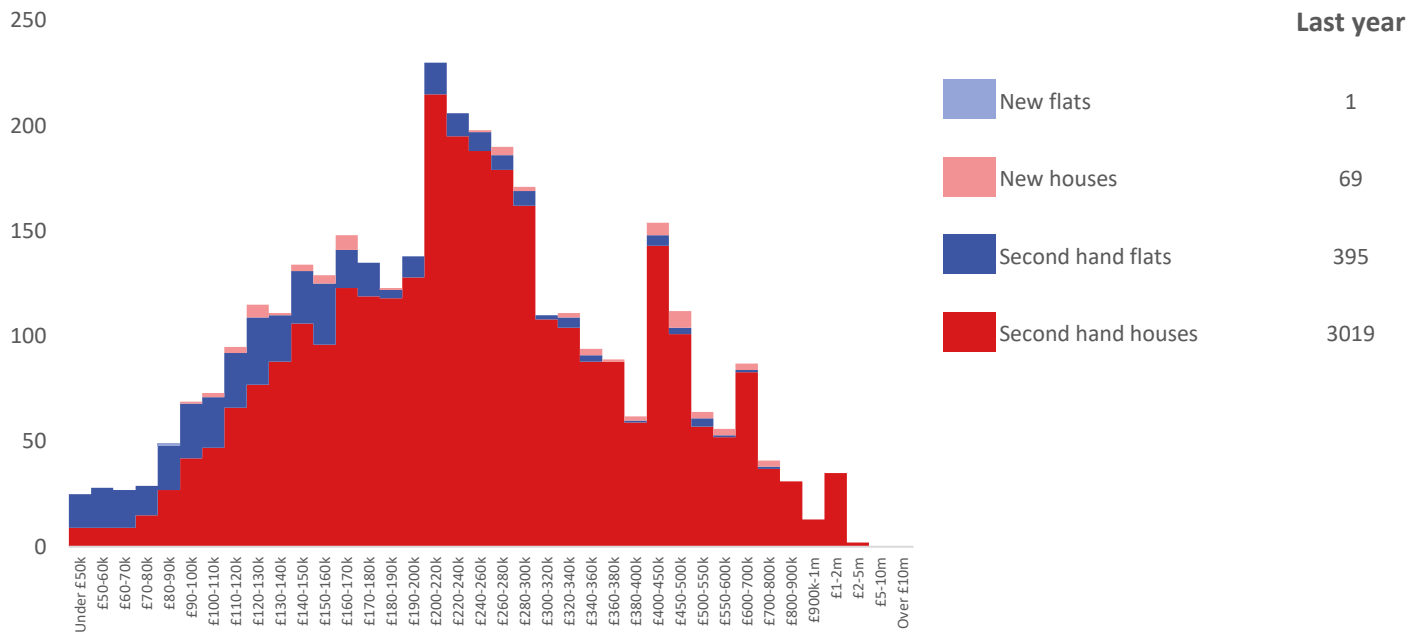
## Cash and New Build Sales as % of Total, by Year



Note: The data on this page EXCLUDES transactions identified as transfers under a power of sale/repossessions, buy-to-lets (where they can be identified by a mortgage), and transfers to non-private individuals - i.e. it comprises only Land Registry 'A' data.

### Depth of Market by Property Type

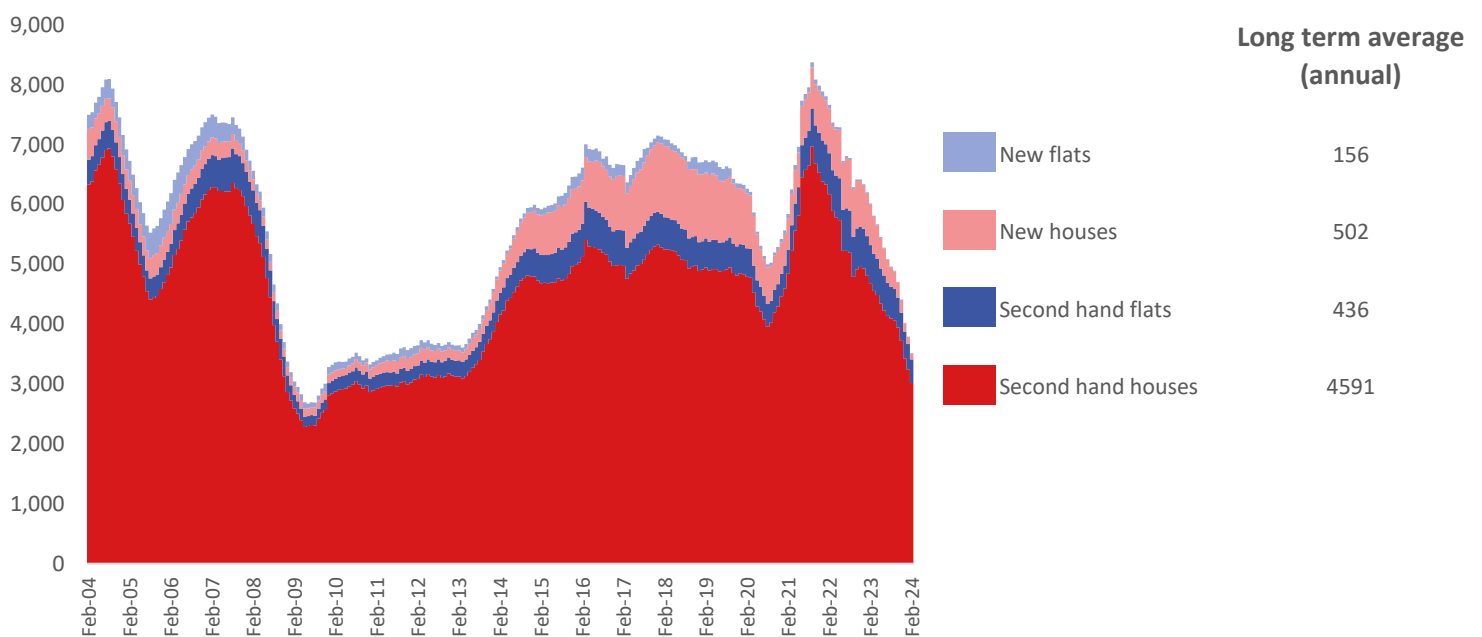
12 months to February 2024



The most common property type transacted over the past 12 months in Cheshire West and Chester was 'second hand houses' with 3,019 sales, 87% of all sales over the same period. The annual total of 3,484 transactions is equivalent to 61% of the long term average level of activity.

### Timeline of Transactions by Type

Rolling 12 months, past 20 years



The most common property type transacted over the past 20 years was 'second hand houses' with the equivalent of 4,591 sales per year on average, making up 81% of the typical annual total over that period.