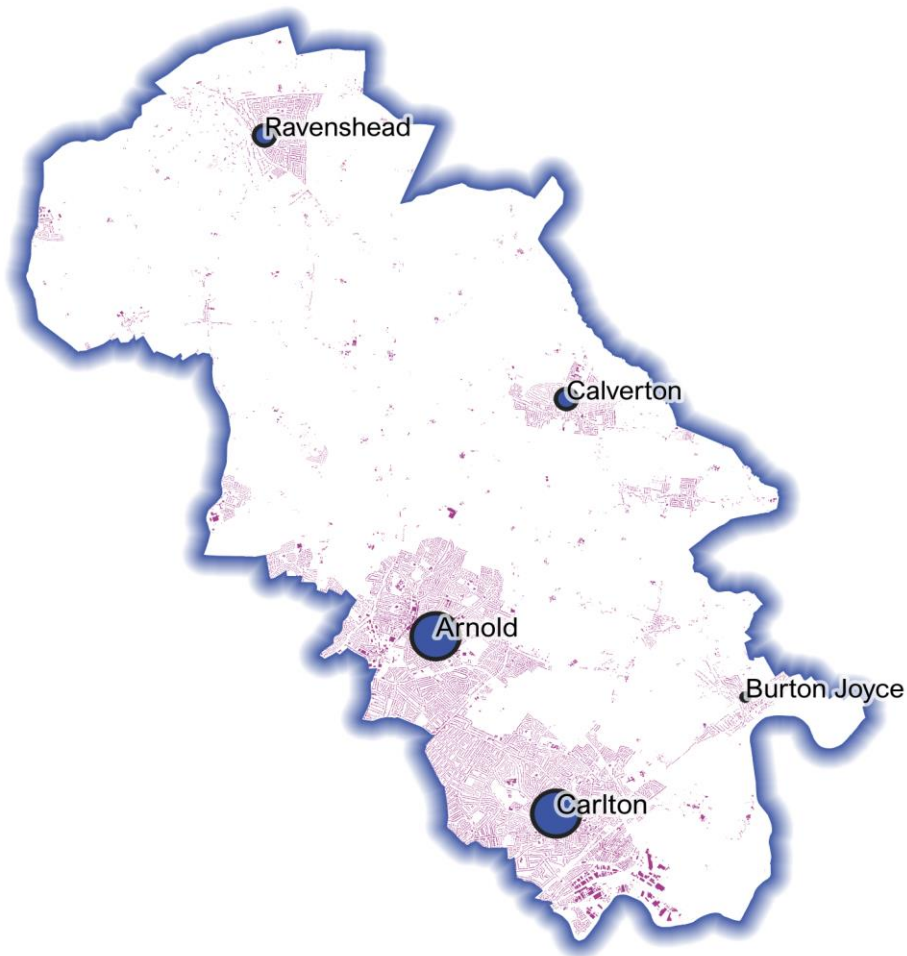


Detailed Price Paid Report:

Gedling



Contents	
2	House price growth
3	Sales map
4	Average prices + distribution
5	Transaction timeline
6	Depth of market

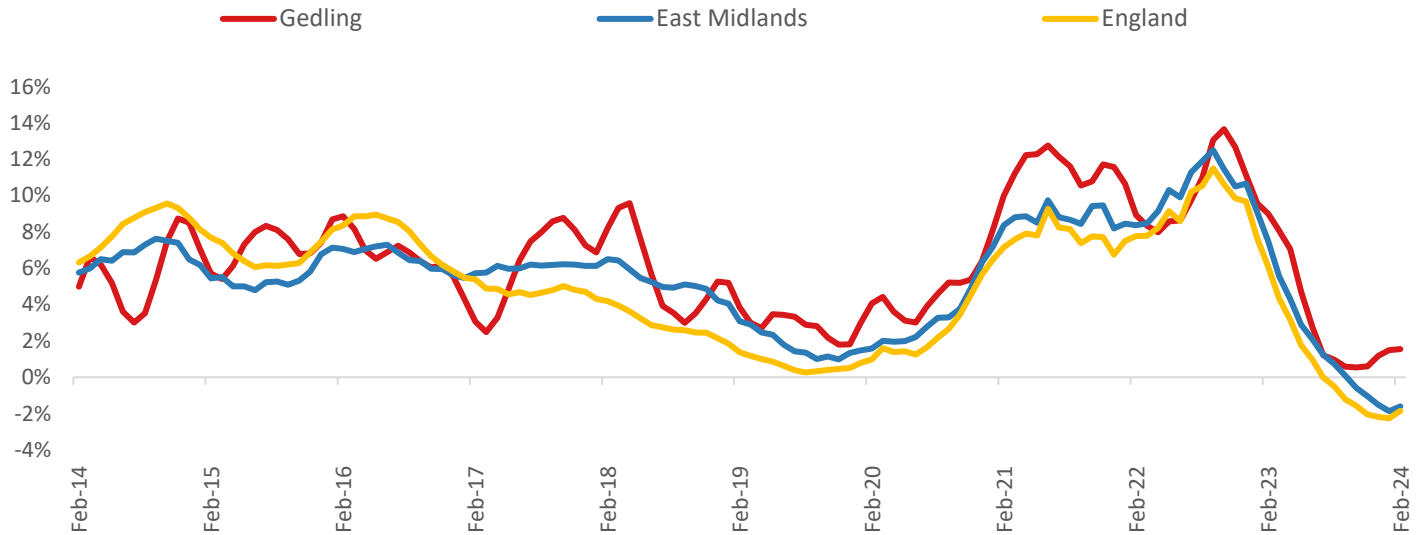


Headline Data

	Current level	3 month	Annual	5 year	10 year
House prices	£252,649	0.3%	1.6%	38.0%	83.9%
Transactions	1,316	-17.8%	-38.6%	-37.0%	-23.5%

House Price Growth (February 2024 data)

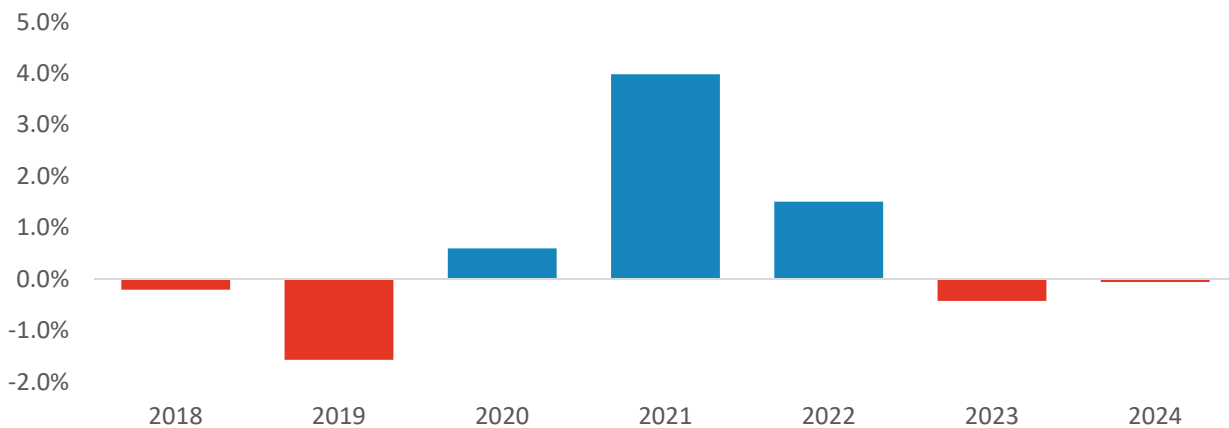
Annual Change in House Prices



House prices in Gedling grew by 1.6% in the 12 months to February 2024 (based on 3-month smoothed data). By comparison national house prices fell by 1.9% and prices in the East Midlands fell by 1.6% over the same period.

Gedling house prices are now 69.2% above their previous peak in 2007, compared to +52.6% for the East Midlands and +53.2% across England.

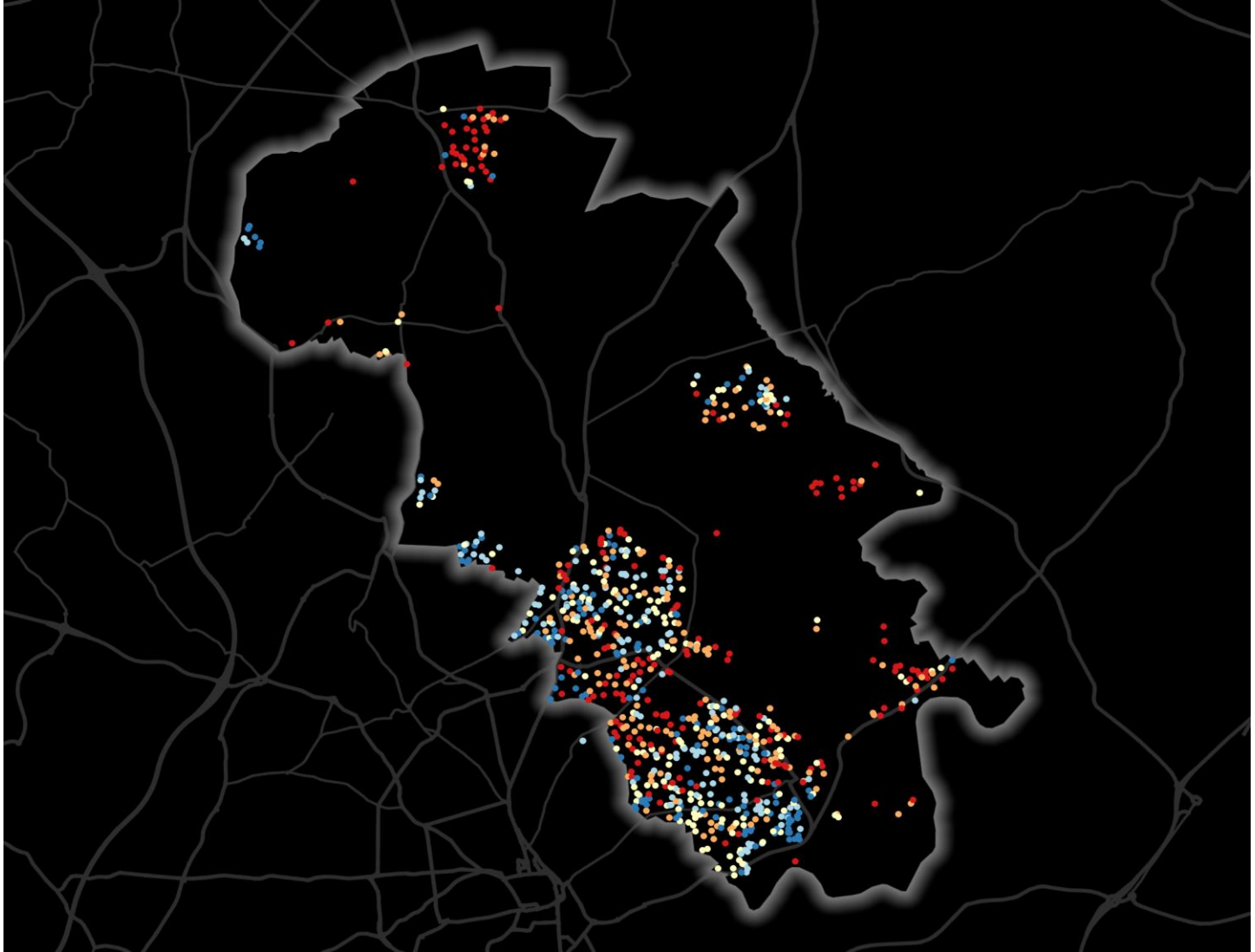
Year-To-Date Change in House Prices, December to February



Local prices have fallen by 0.1% in 2024 so far, compared to a fall of 0.4% over the same period in 2023.

House Price Map

12 months to February 2024



Each point is one postcode, coloured by the average value relative to all sales in this local authority (price bands are LA-specific quintiles).

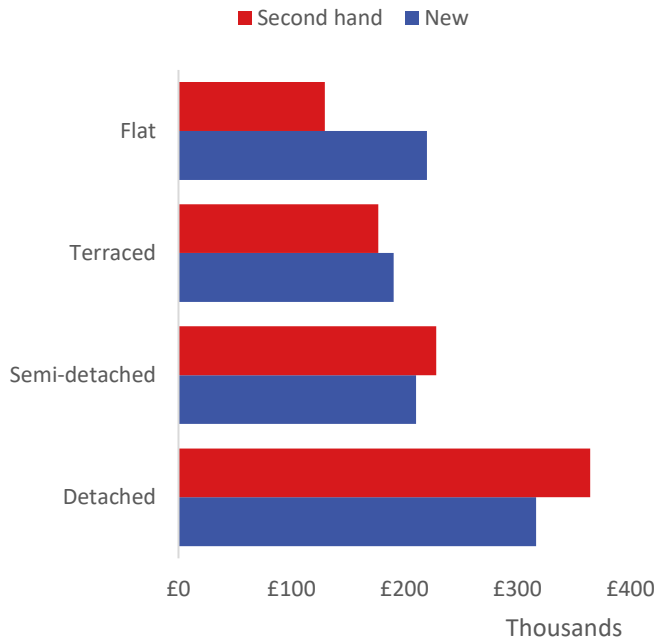
Map Key



	Min	Max	
	Up to	£161,000	1st quintile / lowest 20%
	£161,000	£199,000	2nd quintile
	£199,000	£249,000	3rd quintile
	£249,000	£325,000	4th quintile
	£325,000	and over	5th quintile / highest 20%

Average House Price by Property Type

12 months to February 2024



	New	Second hand
Flat	£219,995	£129,604
Terraced	£190,498	£176,829
Semi-detached	£210,307	£228,031
Detached	£316,483	£364,405

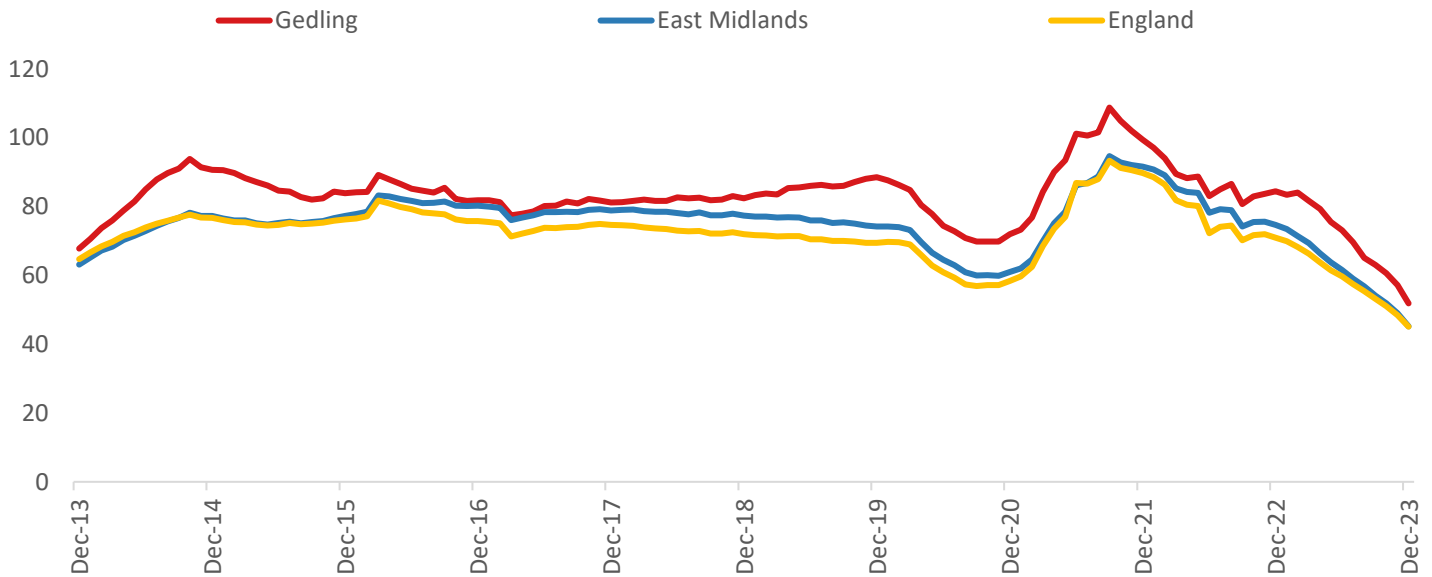
House Price Distribution by Year

All properties, by price band and calendar year

	1997	2002	2007	2012	2017	2022	2023
Under £100k	91%	64%	18%	26%	11%	3%	3%
£100-200k	8%	30%	63%	56%	54%	32%	36%
£200-300k	1%	4%	14%	14%	25%	38%	35%
£300-400k	0%	1%	3%	3%	7%	19%	17%
£400-500k	0%	0%	1%	1%	2%	5%	5%
£500k-1m	0%	0%	1%	1%	2%	3%	3%
£1-2m	0%	0%	0%	0%	0%	0%	0%
Over £2m	0%	0%	0%	0%	0%	0%	0%

Transactions (December 2023 data)

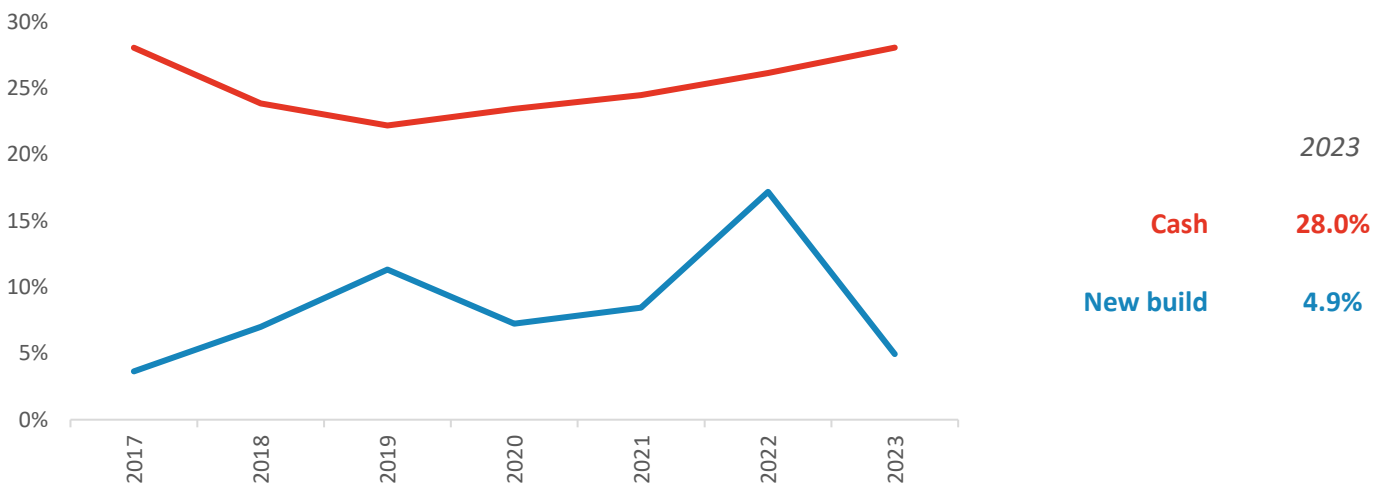
Annual Transactions, Indexed (2001-05 average = 100)



There were 1,316 transactions in Gedling during the 12 months to December 2023. This is 52% of the average from 2001-05 and suggests activity is significantly below pre-downturn levels.

Transactions in Gedling have fallen by 42.8% since 2014, compared to changes of -41.5% for East Midlands and -41.2% for England.

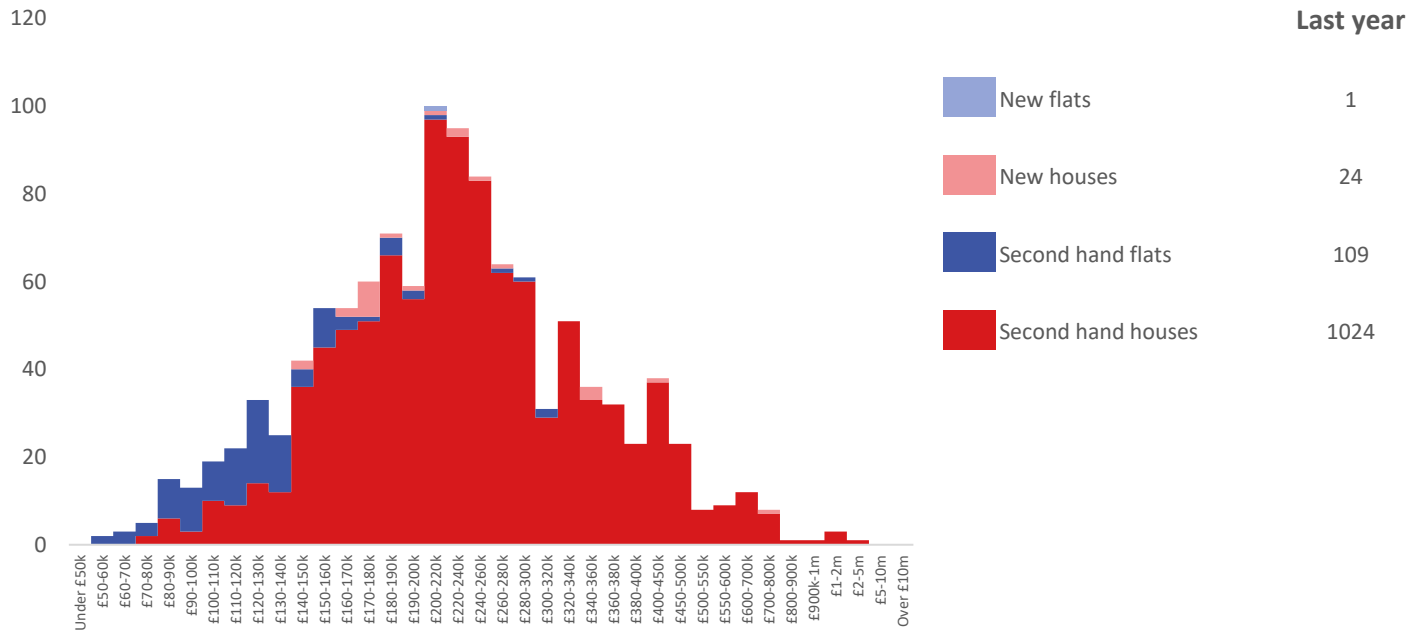
Cash and New Build Sales as % of Total, by Year



Note: The data on this page EXCLUDES transactions identified as transfers under a power of sale/repossessions, buy-to-lets (where they can be identified by a mortgage), and transfers to non-private individuals - i.e. it comprises only Land Registry 'A' data.

Depth of Market by Property Type

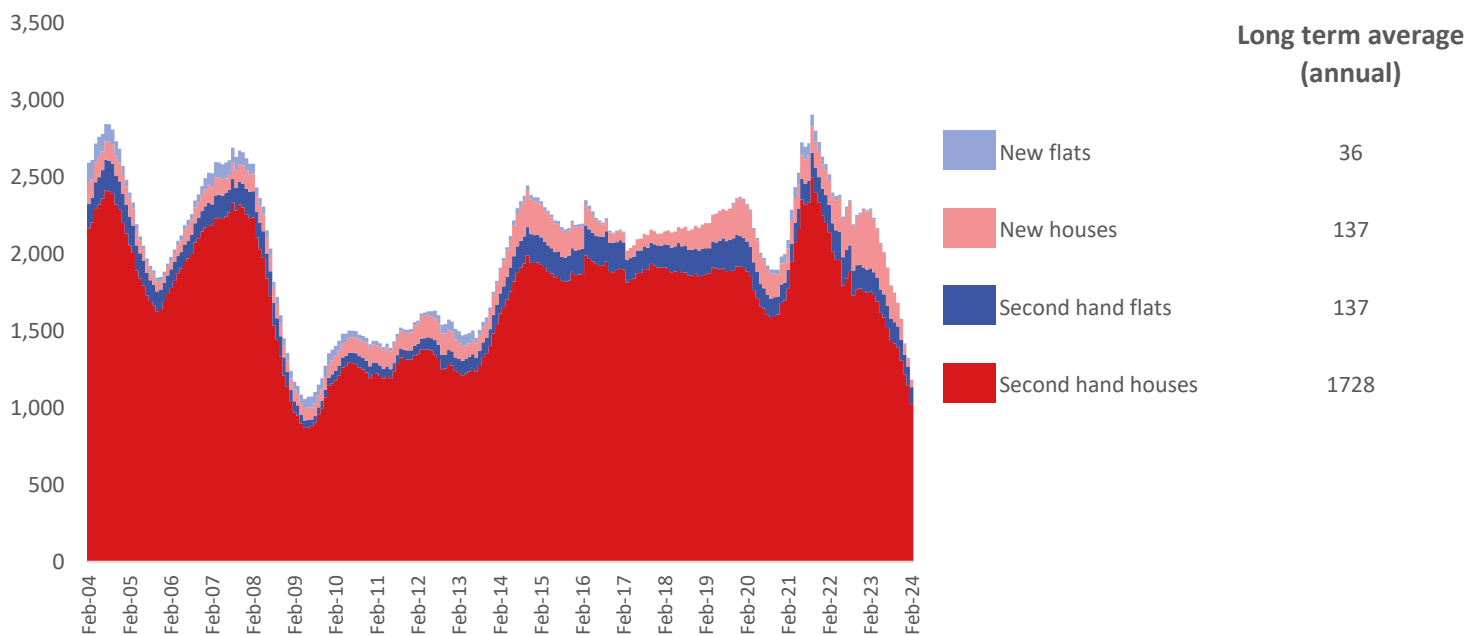
12 months to February 2024



The most common property type transacted over the past 12 months in Gedling was 'second hand houses' with 1,024 sales, 88% of all sales over the same period. The annual total of 1,158 transactions is equivalent to 57% of the long term average level of activity.

Timeline of Transactions by Type

Rolling 12 months, past 20 years



The most common property type transacted over the past 20 years was 'second hand houses' with the equivalent of 1,728 sales per year on average, making up 85% of the typical annual total over that period.