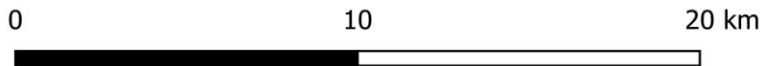
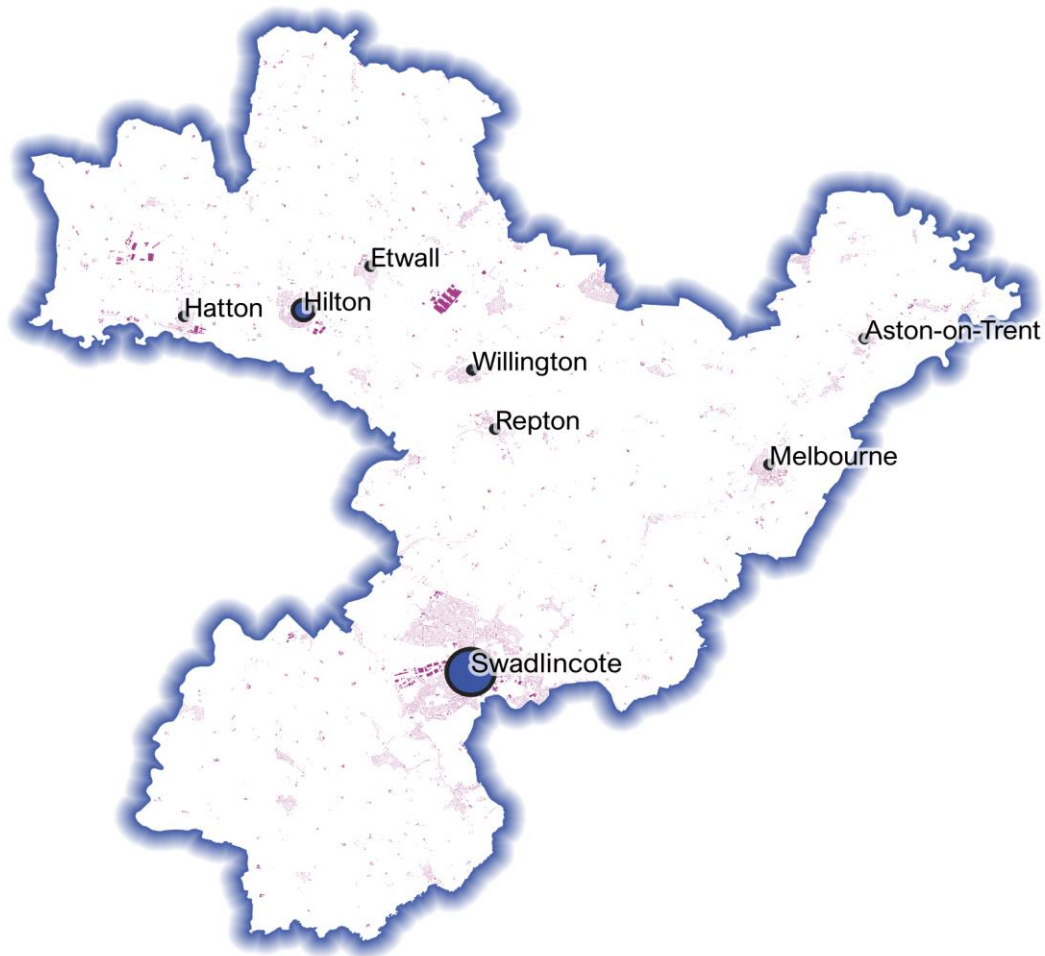


April 2024

Powered By
BuiltPlace

Detailed Price Paid Report:

South Derbyshire



Contents	
2	House price growth
3	Sales map
4	Average prices + distribution
5	Transaction timeline
6	Depth of market



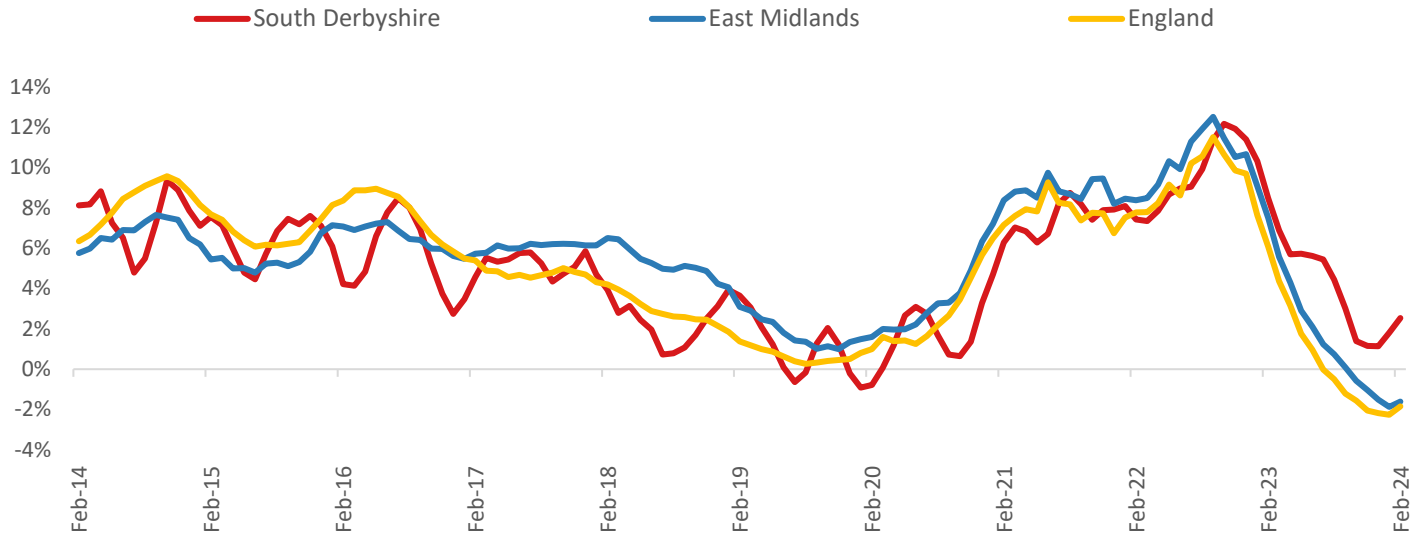
Click the main map above to visit our Cities, Towns & Villages page, for local analysis of the locations shown and over 2000 more

Headline Data

	Current level	3 month	Annual	5 year	10 year
House prices	£246,223	1.2%	2.5%	26.0%	59.0%
Transactions	1,159	-23.0%	-51.1%	-52.0%	-27.5%

House Price Growth (February 2024 data)

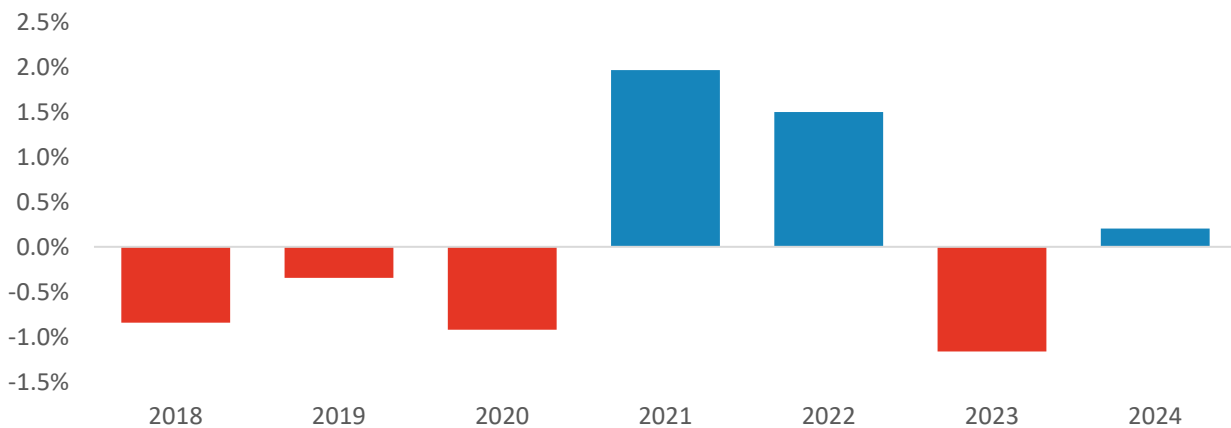
Annual Change in House Prices



House prices in South Derbyshire grew by 2.5% in the 12 months to February 2024 (based on 3-month smoothed data). By comparison national house prices fell by 1.9% and prices in the East Midlands fell by 1.6% over the same period.

South Derbyshire house prices are now 46.8% above their previous peak in 2007, compared to +52.6% for the East Midlands and +53.2% across England.

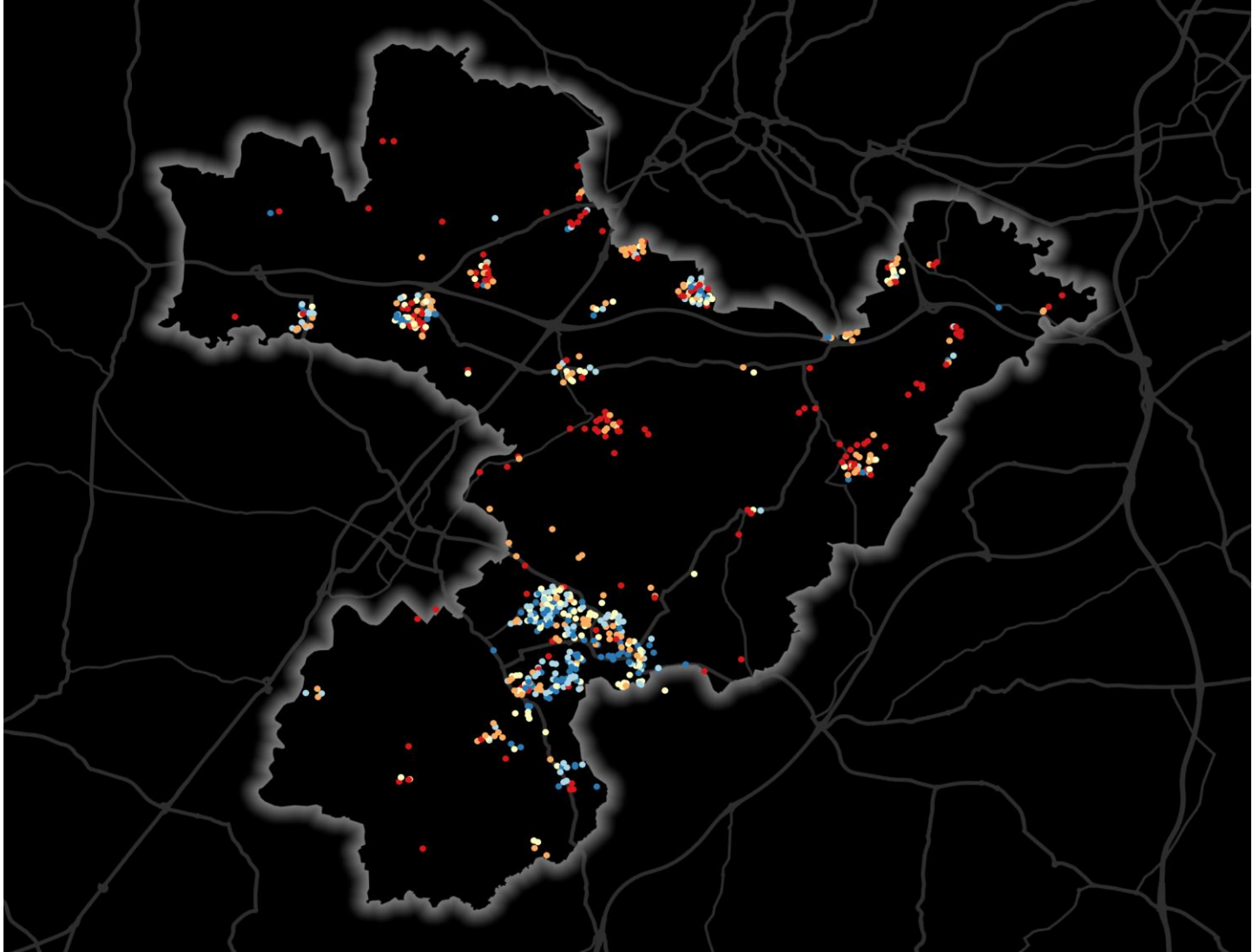
Year-To-Date Change in House Prices, December to February



Local prices have grown by 0.2% in 2024 so far, compared to a fall of 1.2% over the same period in 2023.

House Price Map

12 months to February 2024



Each point is one postcode, coloured by the average value relative to all sales in this local authority (price bands are LA-specific quintiles).

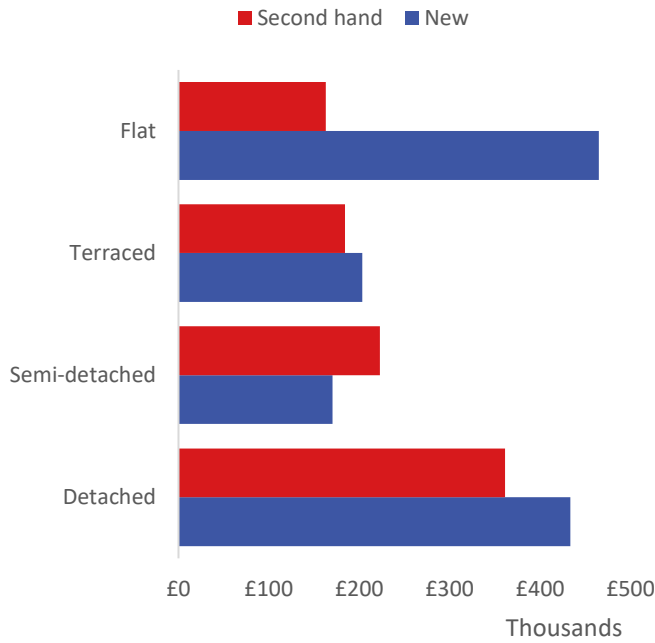
Map Key



	Min	Max	
	Up to	£158,000	1st quintile / lowest 20%
	£158,000	£203,000	2nd quintile
	£203,000	£249,000	3rd quintile
	£249,000	£315,000	4th quintile
	£315,000	and over	5th quintile / highest 20%

Average House Price by Property Type

12 months to February 2024



	New	Second hand
Flat	£465,000	£162,869
Terraced	£203,320	£184,180
Semi-detached	£170,380	£222,948
Detached	£433,335	£361,391

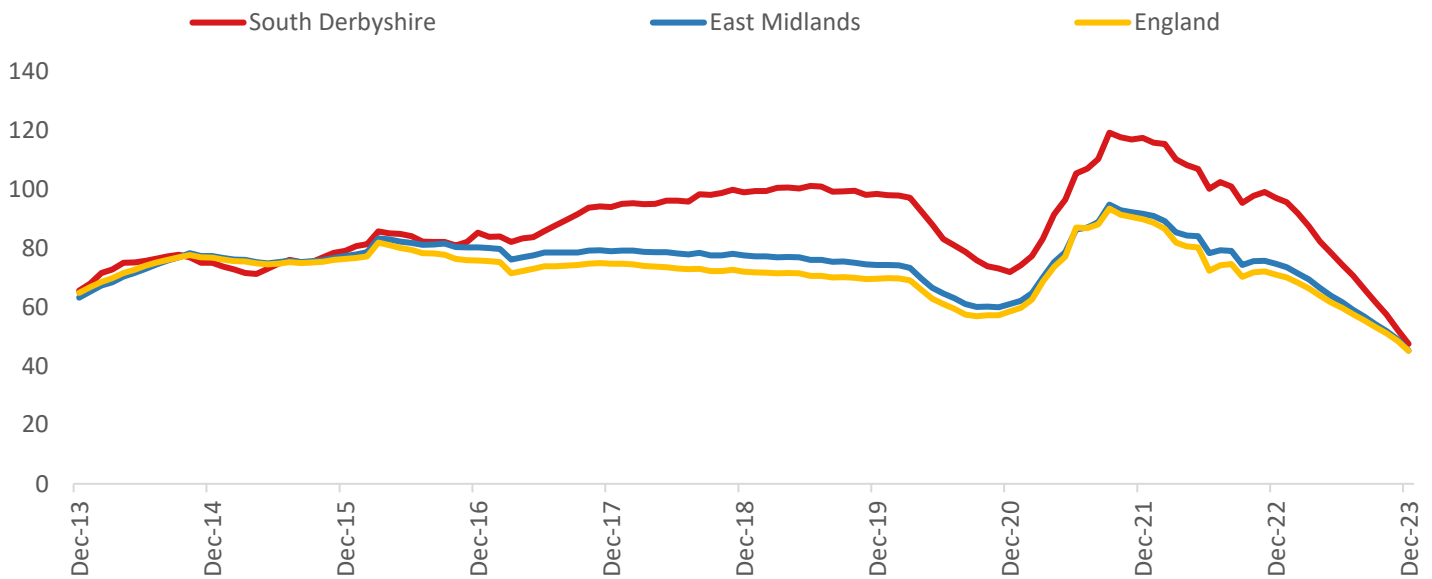
House Price Distribution by Year

All properties, by price band and calendar year

	1997	2002	2007	2012	2017	2022	2023
Under £100k	89%	56%	13%	19%	7%	3%	4%
£100-200k	10%	38%	64%	55%	46%	28%	35%
£200-300k	1%	5%	16%	16%	30%	41%	38%
£300-400k	0%	1%	4%	5%	12%	17%	12%
£400-500k	0%	0%	2%	3%	3%	7%	6%
£500k-1m	0%	0%	1%	2%	2%	5%	4%
£1-2m	0%	0%	0%	0%	0%	0%	1%
Over £2m	0%	0%	0%	0%	0%	0%	0%

Transactions (December 2023 data)

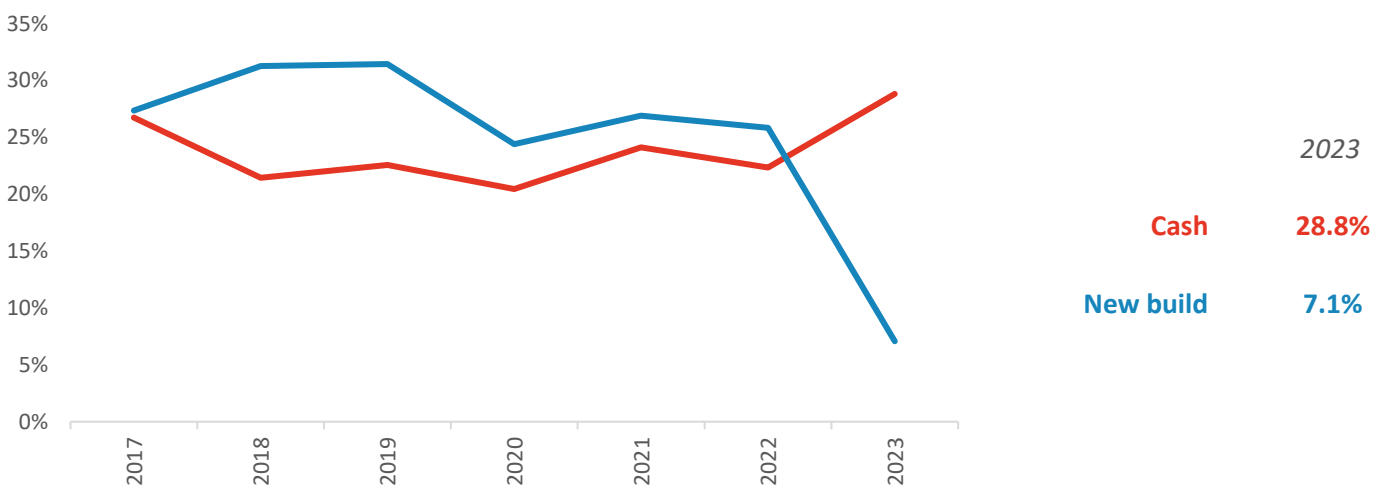
Annual Transactions, Indexed (2001-05 average = 100)



There were 1,159 transactions in South Derbyshire during the 12 months to December 2023. This is 47% of the average from 2001-05 and suggests activity is significantly below pre-downturn levels.

Transactions in South Derbyshire have fallen by 36.7% since 2014, compared to changes of -41.5% for East Midlands and -41.2% for England.

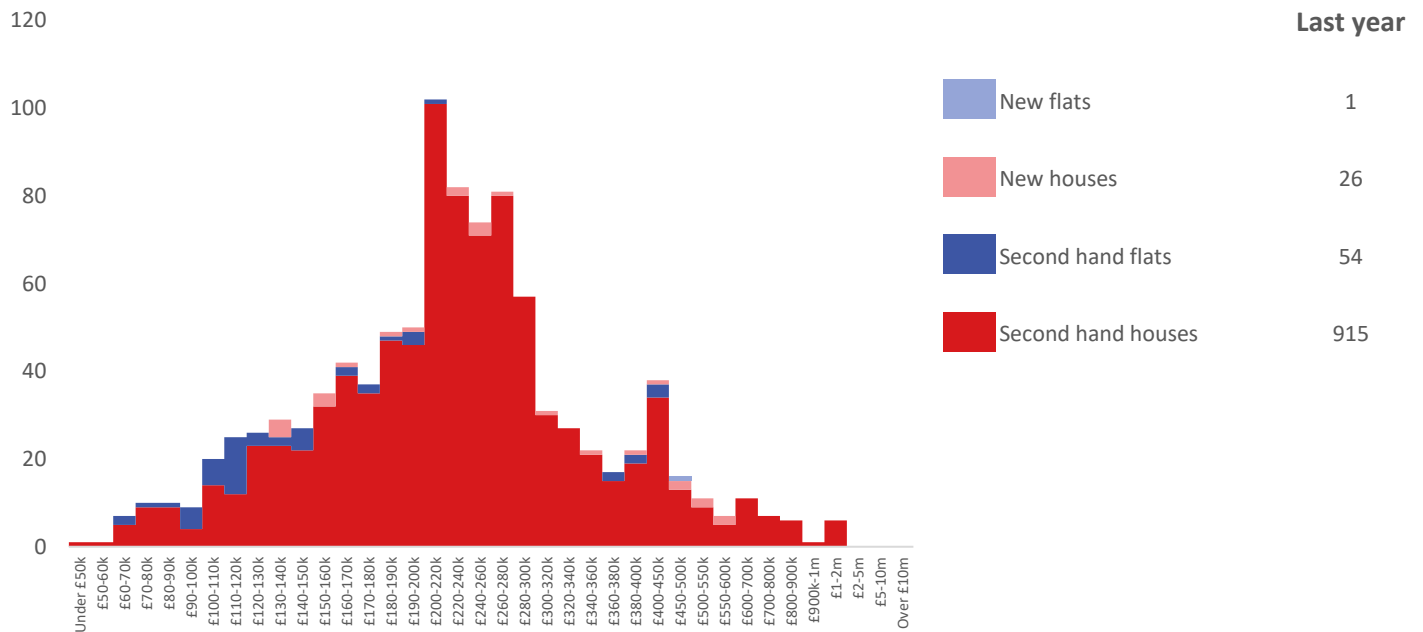
Cash and New Build Sales as % of Total, by Year



Note: The data on this page EXCLUDES transactions identified as transfers under a power of sale/repossessions, buy-to-lets (where they can be identified by a mortgage), and transfers to non-private individuals - i.e. it comprises only Land Registry 'A' data.

Depth of Market by Property Type

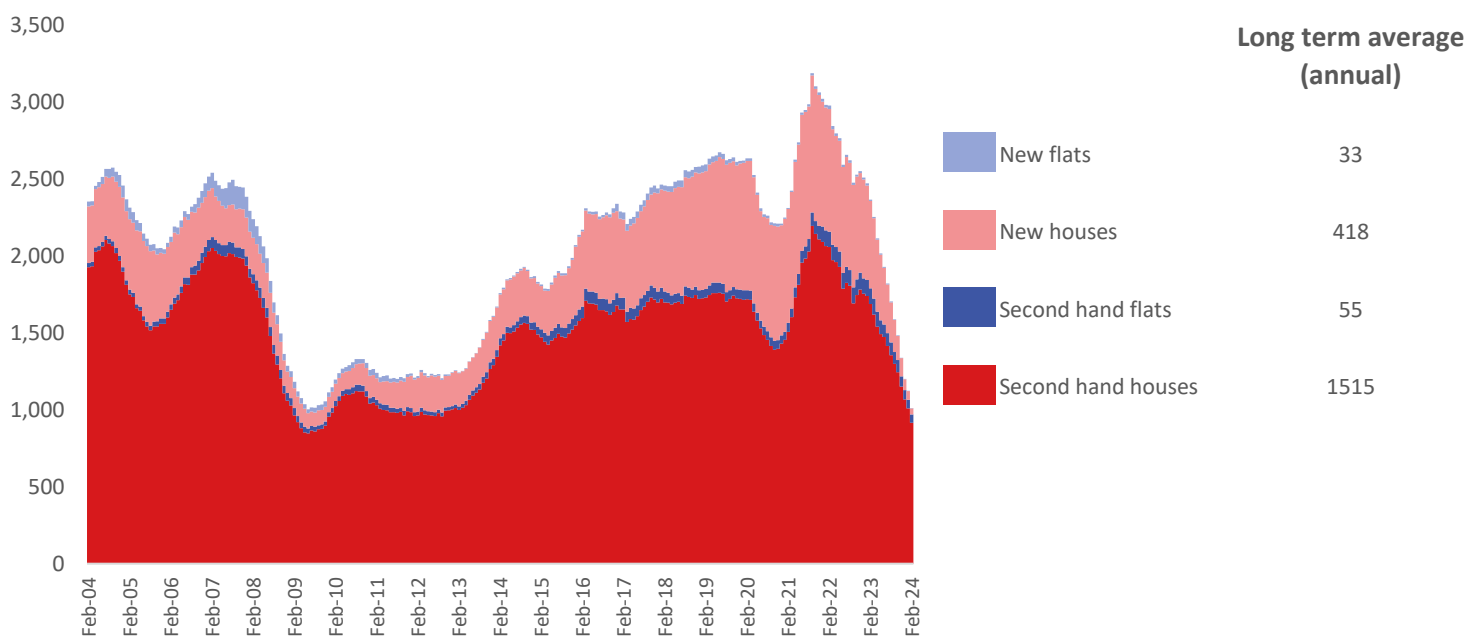
12 months to February 2024



The most common property type transacted over the past 12 months in South Derbyshire was 'second hand houses' with 915 sales, 92% of all sales over the same period. The annual total of 996 transactions is equivalent to 49% of the long term average level of activity.

Timeline of Transactions by Type

Rolling 12 months, past 20 years



The most common property type transacted over the past 20 years was 'second hand houses' with the equivalent of 1,515 sales per year on average, making up 75% of the typical annual total over that period.