

July 2022 Housing Market Report

Fylde

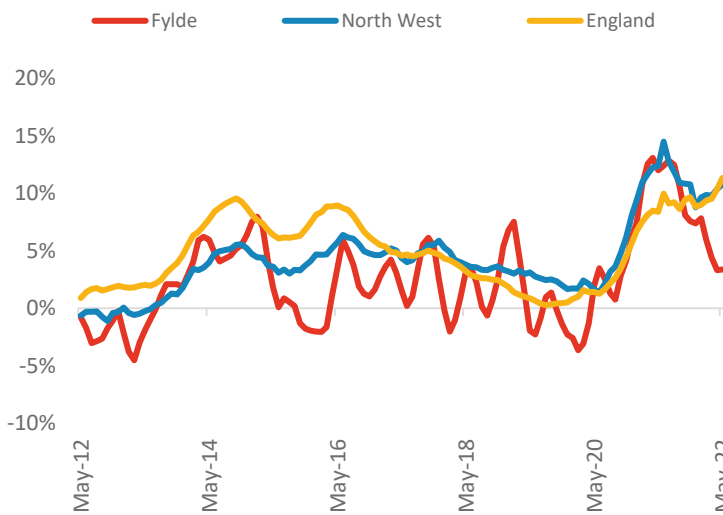
Powered by: **BuiltPlace**



	Current level	3 month	Annual	5 year	10 year
House prices	£222,183	0.3%	3.4%	19.5%	33.0%
Transactions	1,642	-10.3%	8.8%	-4.6%	60.8%

House Prices (May 2022 data)

Annual Change in House Prices



House prices in Fylde grew by 3.4% in the 12 months to May 2022 (based on 3-month smoothed data). By comparison national house prices grew by 11.3% and prices in the North West grew by 10.8% over the same period.

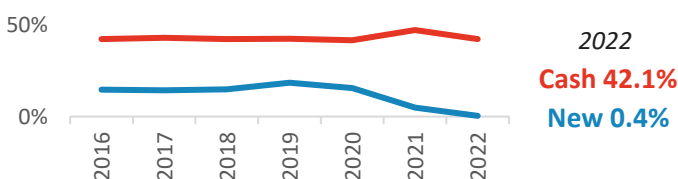
Fylde house prices are now 10.5% above their previous peak in 2007, compared to +35.5% for the North West and +53.6% across England.

Local prices have grown by 1.2% in 2022 so far, compared to growth of 5.1% over the same period last year.

Transactions (March 2022 data)

There were 1,642 transactions in Fylde during the 12 months to March 2022. This is 77% of the average from 2001-05 and suggests activity is below pre-downturn levels. Transactions in Fylde have grown by 11.8% since 2014, compared to changes of -1.4% for the North West and -13.6% for England.

Cash and New Build Sales as % of Total, by Year*

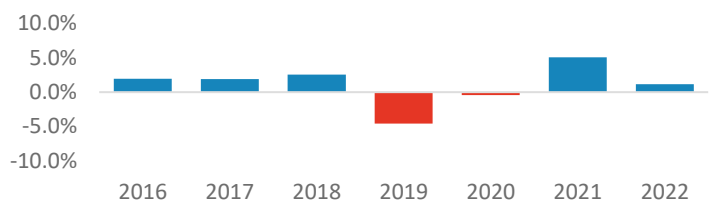


* The latest data here is subject to the 'Land Registry Lag'. For more details:

<https://builtplace.com/digging-deeper-land-reg-lag-coronavirus/>

Note: These transaction counts do not include those identified as transfers under a power of sale/repossessions, buy-to-lets (where they can be identified by a mortgage), and transfers to non-private individuals.

Year-To-Date Change in House Prices, December to May



Annual Transactions, Indexed (2001-05 average = 100)

